

technical data

Concealed ceiling unit
FXMQ-PVE

air conditioning systems

VRV[®] III-S
VRV[®] III
VRV[®] -WII

R-410A

2e

TABLE OF CONTENTS

FXMQ-PVE

1	Specifications	2
	Technical Specifications	2
	Electrical Specifications	3
2	Safety device settings	4
3	Options	4
4	Control systems	5
5	Dimensional drawing & centre of gravity	6
	Dimensional drawing	6
	Centre of gravity	8
6	Piping diagram	9
7	Wiring diagram	10
	Wiring diagram	10
8	Sound data	11
	Sound pressure spectrum	11
9	Fan characteristics	13

1 Specifications

®

1-1 TECHNICAL SPECIFICATIONS				FXMQ40PVE	FXMQ50PVE	FXMQ63PVE	FXMQ80PVE	FXMQ100PVE	FXMQ125PVE
Capacity	Cooling	kW		4.5	5.6	7.1	9.0	11.2	14.0
	Heating	kW		5.0	6.3	8.0	10.0	12.5	16.0
Power Input	Cooling	kW		0.194 (1) 0.193 (2)	0.215 (1) 0.214 (2)	0.230 (1) 0.229 (2)	0.298 (1) 0.297 (2)	0.376 (1) 0.375 (2)	0.461 (1) 0.460 (2)
	Heating	kW		0.182	0.203	0.218	0.286	0.364	0.449
Casing	Material			Galvanised steel plate					
Dimensions	Unit	Height	mm	300	300	300	300	300	300
		Width	mm	700	1,000	1,000	1,000	1,400	1,400
		Depth	mm	700	700	700	700	700	700
Weight	Unit		kg	28	36	36	36	46	46
Heat Exchanger	Dimensions	Nr of Rows		3	3	3	3	3	3
		Fin Pitch	mm	1.75	1.75	1.75	1.75	1.75	1.75
		Face Area	m ²	0.148	0.249	0.249	0.249	0.383	0.383
		Nr of Stages		16	16	16	16	16	16
Fan	Type			Sirocco fan					
Air Flow Rate	Cooling	High high	m ³ /min	16	18	19.5	25	32	39
		High	m ³ /min	13	16.5	17.5	22.5	27	33
		Low	m ³ /min	11	15	16	20	23	28
Fan	External static pressure	High	Pa	160	200	200	200	200	200
		Standard	Pa	100	100	100	100	100	100
		Low	Pa	30	50	50	50	50	50
	Motor	Output (high)	W	140	350	350	350	350	350
Drive			Direct drive						
Piping connections	Liquid (OD)	Type		Flare connection					
		Diameter	mm	6.35	9.52	9.52	9.52	9.52	9.52
	Gas	Type		Flare connection					
		Diameter	mm	12.7	15.9	15.9	15.9	15.9	15.9
Drain	Diameter		VP25 (I.D. 32/O.D. 25)						
Refrigerant control				Electronic expansion valve					
Temperature control				Microprocessor thermostat for cooling and heating					
Safety devices				Fuse					
				Fan driver overload protector					
Standard Accessories	Standard Accessories			Operation manual					
				Installation manual					
				Drain hose					
				Sealing pads					
				Clamps					
				Washer					
				Screws					
				Insulation for fitting					
				Clamp metal					
				Air discharge flange					
				Air suction flange					
Legend				(1) 50Hz, 220-240V (2) 60Hz, 220V					
Notes				Nominal cooling capacities are based on following conditions: return air temperature: 27°CDB/19°CWB; outdoor temperature: 35°CDB; standard external static pressure: 100Pa; equivalent refrigerant piping: 7.5m (horizontal)					
				Nominal heating capacities are based on following conditions: return air temperature: 20°CDB; outdoor temperature: 7°CDB/6°CWB; standard external static pressure: 100Pa; equivalent refrigerant piping: 7.5m (horizontal)					
				Capacities are net, including a deduction for cooling (an addition for heating) for indoor fan motor heat.					
				External static pressure is changeable in 13 or 14 stages within the () range by the remote control.					
				Air filter is not standard accessory, but please mount it in the duct system of the suction side. Select its colorimetric method(gravity method) 50% or more.					

1 Specifications

1-2 ELECTRICAL SPECIFICATIONS			FXMQ40PVE	FXMQ50PVE	FXMQ63PVE	FXMQ80PVE	FXMQ100PVE	FXMQ125PVE	
Power Supply	Name	VE							
	Phase	1~							
	Frequency	Hz	50/60						
	Voltage	V	220-240/220						
Current	Minimum circuit amps (MCA)	A	1.4	1.6	1.8	2.3	2.9	3.4	
	Maximum fuse amps (MFA)	A	16	16	16	16	16	16	
	Full load amps (FLA)	A	1.1	1.3	1.4	1.8	2.3	2.7	
Voltage range	Minimum	V	-10%						
	Maximum	V	+10%						
Notes	Voltage range : units are suitable for use on electrical systems where voltage supplied to unit terminals is not below or above listed range limits.								
	Maximum allowable voltage range variation between phases is 2%.								
	MCA/MFA : MCA = 1.25 x FLA								
	MFA is smaller than or equal to 4 x FLA								
	Next lower standard fuse rating minimum 16A								
	Select wire size based on the MCA								
	Instead of a fuse, use a circuit breaker								

2 Safety device settings

FXMQ-P							
	Safety devices	40	50	63	80	100	125
FXMQ-PVE	PC board fuse	250V 3.15A	250V 3.15A	250V 3.15A	250V 3.15A	250V 3.15A	250V 3.15A
	PC board fuse (Fan driver)	250V 5A	250V 6.3A	250V 6.3A	250V 6.3A	250V 6.3A	250V 6.3A
	Drain pump thermal fuse	145	145	145	145	145	145

3D034597E

3 Options

FXMQ-P							
Item	Model	DUCT TYPE					
		FXMQ40PVE	FXMQ50PVE	FXMQ63PVE	FXMQ80PVE	FXMQ100PVE	FXMQ125PVE
High efficiency filter	65%	KAF372AA56	KAF372AA80			KAF372AA160	
	90%	KAF373AA56	KAF373AA80			KAF373AA160	
Filter chamber		KDDF37AA56	KDDF37AA80			KDDF37AA160	
long life replacement filter		KAF371AA56	KAF371AA80			KAF371AA160	
Long life replacement filter chamber kit		KAF375AA56	KAF375AA80			KAF375AA160	
Service panel		KTBJ25K56W	KTBJ25K80W			KTBJ25K160W	
		KTBJ25K56F	KTBJ25K80F			KTBJ25K160F	
		KTBJ25K56T	KTBJ25K80T			KTBJ25K160T	
Air discharge adapter		KDAJ25K56A	KDAJ25K80A			KDAJ25K160A	

NOTE

1 See the latest for the modification marks

3D060443

4 Control systems

FXMQ-P

No.	Type		FXMQ~PVE
	Item		
1	Remote control	Wireless	H/P C/O
		Wired	
2	Simplified remote control		BRC2C51
3	Remote control for hotel use		BRC3A61
4	Adaptor for wiring		★KRP1C64
5-1	Wiring adaptor for electrical appendices (1)		★KRP2A61
5-1	Wiring adaptor for electrical appendices (2)		★KRP4AA51
6	Remote sensor		KRCS01-1B
7	Mounting plate for adapter PCB		Note 2, 3 KRP4A96
8	Central remote control		DCS302CA61
8-1	Electrical box with earth terminal (3 blocks)		KJB311AA
9	Unified on/off control		DSC301BA61
9-1	Electrical box with earth terminal (2 blocks)		KJB212AA
9-2	Noise filter (for electromagnetic interface use only)		KEK26-1A
10	Schedule timer		DST301BA61
11	External control adaptor for outdoor unit (Must be installed on indoor units)		★DTA104A61

NOTES

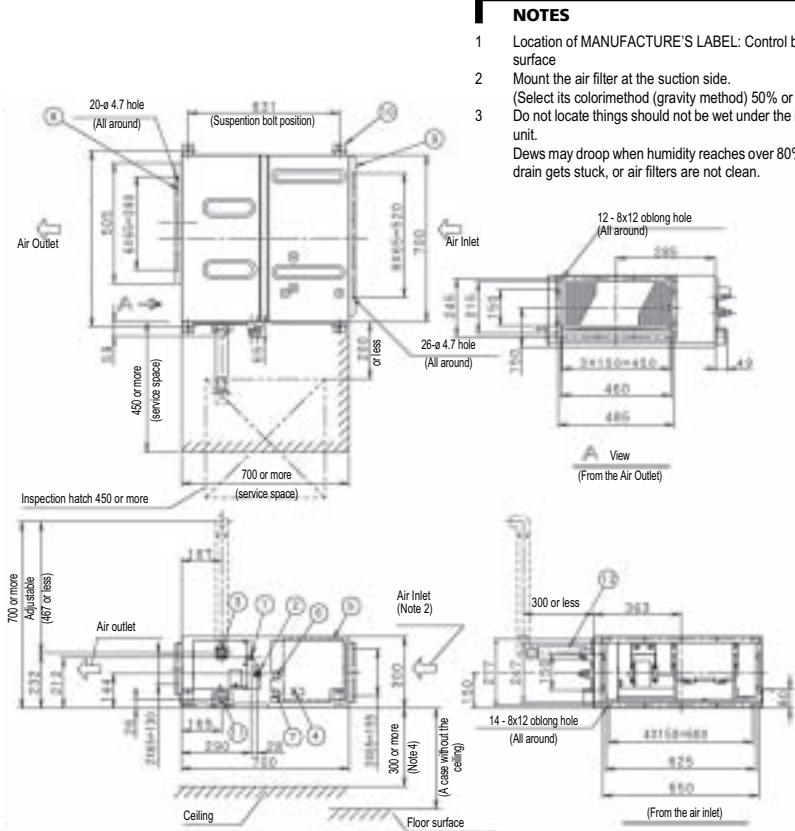
- 1 Mounting plate (No.7) is necessary for each adapter marked ★.
- 2 Up to 2 adapters can be fixed for each mounting plate.
- 3 Only one mounting plate can be installed for each indoor unit.

3D060455

5 Dimensional drawing & centre of gravity

5 - 1 Dimensional drawing

FXMQ40P

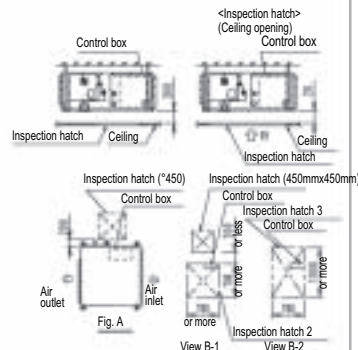


- NOTES**
- 1 Location of MANUFACTURE'S LABEL: Control box surface
 - 2 Mount the air filter at the suction side. (Select its color/method (gravity method) 50% or more)
 - 3 Do not locate things should not be wet under the indoor unit. Dews may droop when humidity reaches over 80%, or a drain gets stuck, or air filters are not clean.

Space for Service Works

According to any one of below 1) - 3), secure a space for service works, such as, checking and maintenance of control box and drain pumps, etc.

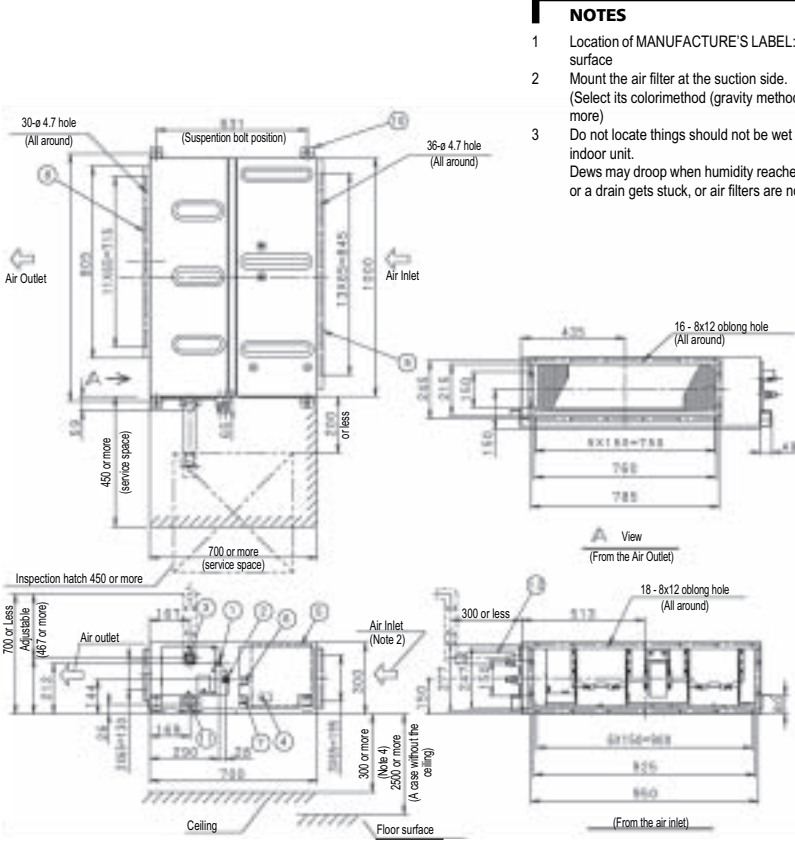
- 1) One inspection hatch (450x450) on the control box side and a space of 300mm or more under the unit. (Fig.A)
- 2) One inspection hatch (450x450) on the control box side and 2 (two) inspection hatches under the unit (Arrow view B-1)
- 3) 3 (three) inspection hatches under the unit and the control box. (Arrow view B-2)



12	Drain hose (accessory)	O.D. ø 32 (outlet)
11	Socket (for maintenance)	VP25 (O.D. ø 32 / I.D. ø 25)
10	Hook	For M10
9	Air suction flange	
8	Air discharge flange	
7	Power supply connection	
6	Interunit wiring connection	
5	Control box (inside)	
4	Ground terminal (in control box)	M4
3	Drain pipe connection	VP25 (O.D. ø 32 / I.D. ø 25)
2	Gas pipe connection	ø 12.7 flange connection
1	Liquid pipe connection	ø 6.4 flange connection
ITEM	PART NAME	REMARK

3D060160

FXMQ50,63,80P

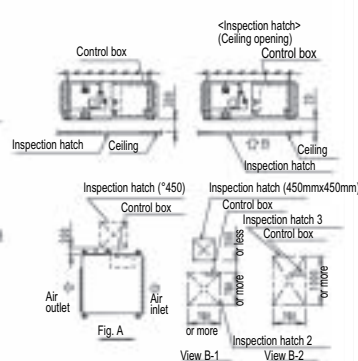


- NOTES**
- 1 Location of MANUFACTURE'S LABEL: Control box surface
 - 2 Mount the air filter at the suction side. (Select its color/method (gravity method) 50% or more)
 - 3 Do not locate things should not be wet under the indoor unit. Dews may droop when humidity reaches over 80%, or a drain gets stuck, or air filters are not clean.

Space for Service Works

According to any one of below 1) - 3), secure a space for service works, such as, checking and maintenance of control box and drain pumps, etc.

- 1) One inspection hatch (450x450) on the control box side and a space of 300mm or more under the unit. (Fig.A)
- 2) One inspection hatch (450x450) on the control box side and 2 (two) inspection hatches under the unit (Arrow view B-1)
- 3) 3 (three) inspection hatches under the unit and the control box. (Arrow view B-2)



12	Drain hose (accessory)	O.D. ø 32 (outlet)
11	Socket (for maintenance)	VP25 (O.D. ø 32 / I.D. ø 25)
10	Hook	For M10
9	Air suction flange	
8	Air discharge flange	
7	Power supply connection	
6	Interunit wiring connection	
5	Control box (inside)	
4	Ground terminal (in control box)	M4
3	Drain pipe connection	VP25 (O.D. ø 32 / I.D. ø 25)
2	Gas pipe connection	ø 15.9 flange connection
1	Liquid pipe connection	ø 9.5 flange connection
ITEM	PART NAME	REMARK

3D060161

5 Dimensional drawing & centre of gravity

5 - 1 Dimensional drawing

FXMQ100,125P

NOTES

- Location of MANUFACTURE'S LABEL:
Control box surface
- Mount the air filter at the suction side.
(Select its color/method (gravity method) 50% or more)
- Do not locate things should not be wet under the indoor unit.
Dews may droop when humidity reaches over 80%, or a drain gets stuck, or air filters are not clean.
- Space for Service Works
According to any one of below 1) - 3), secure a space for service works, such as, checking and maintenance of control box and drain pumps, etc.
 - One inspection hatch (450x450) on the control box side and a space of 300mm or more under the unit. (Fig.A)
 - One inspection hatch (450x450) on the control box side and 2 (two) inspection hatches under the unit (Arrow view B-1)
 - 3 (three) inspection hatches under the unit and the control box. (Arrow view B-2)

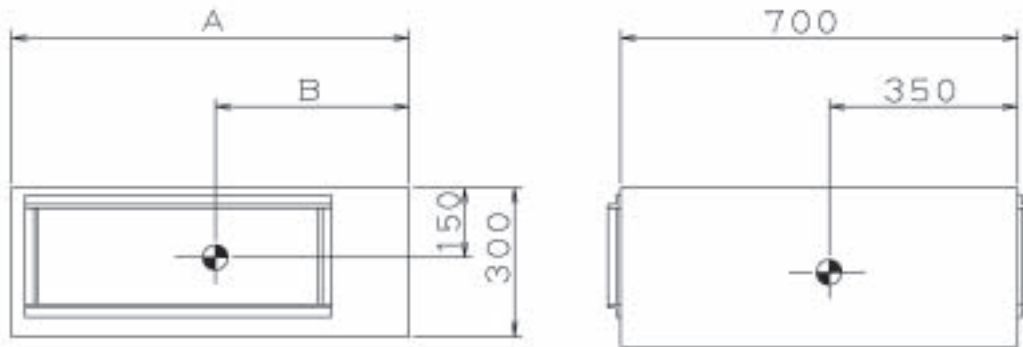
12	Drain hose (accessory)	O.D. ø 32 (outlet)
11	Socket (for maintenance)	VP25 (O.D. ø 32 / I.D. ø 25)
10	Hook	For M10
9	Air suction flange	
8	Air discharge flange	
7	Power supply connection	
6	Interunit wiring connection	
5	Control box (inside)	
4	Ground terminal (in control box)	M4
3	Drain pipe connection	VP25 (O.D. ø 32 / I.D. ø 25)
2	Gas pipe connection	ø 15.9 flare connection
1	Liquid pipe connection	ø 9.5 flare connection
ITEM	PART NAME	REMARK

3D060162

5 Dimensional drawing & centre of gravity

5 - 2 Centre of gravity

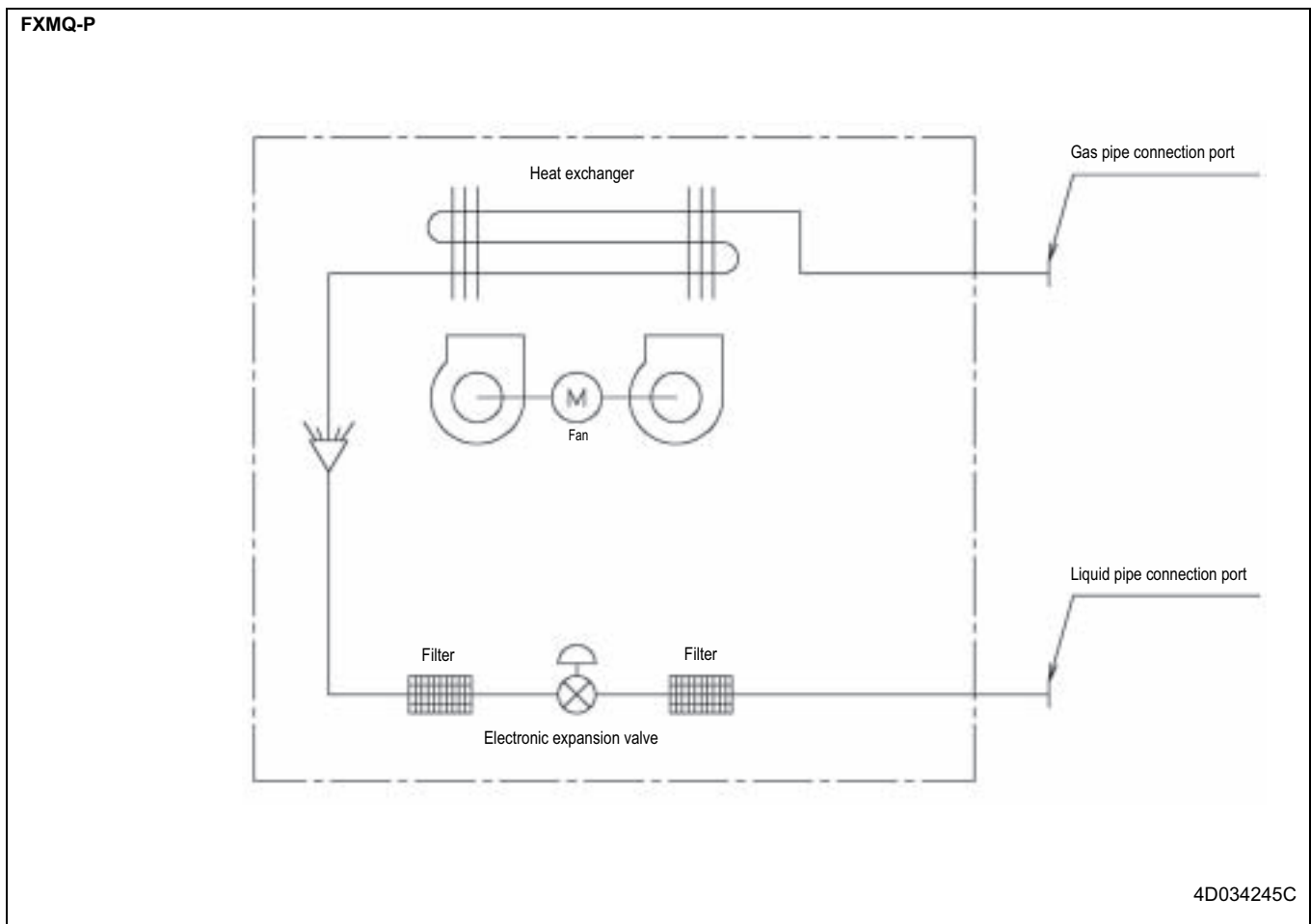
FXMQ-P



MODEL NAME	A	B
FXMQ40P	700	280
FXMQ50•63•80P	1000	460
FXMQ100•125P	1400	600

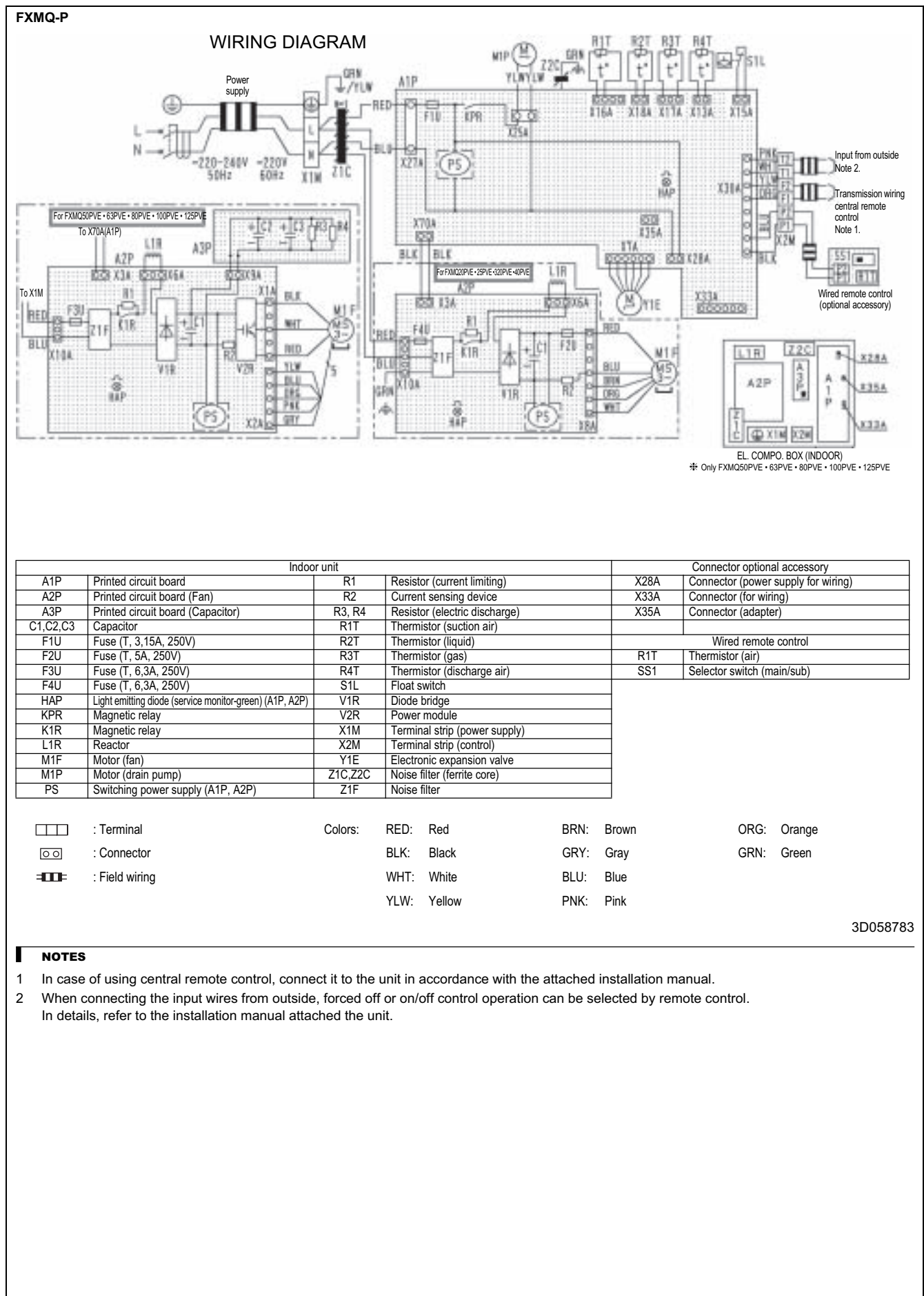
4D060438

6 Piping diagram



7 Wiring diagram

7 - 1 Wiring diagram



3D058783

8 Sound data

8 - 1 Sound pressure spectrum

FXMQ40P

Octave band sound pressure level $dB(0dB=0.002\mu bar)$

Octave band center frequency (Hz)

Approximate threshold hearing for continuous noise

4D060446

NOTES

- Over All (dB):
(B, G, N is already rectified)

Scale	Air flow rate		
	HH	H	L
A	39.0	37.0	35.0
C	45.0	42.0	41.0

- Operating conditions:
 - Power source: 220-240V 50Hz / 220V 60Hz
 - Cooling - Return air temperature: 27°C DB, 19°C WB
Outdoor temperature: 35°C DB, 24°C WB
 - Heating - Return air temperature: 20°C DB, 15°C WB
Outdoor temperature: 7°C DB, 6°C WB
 - External static Pressure: 100Pa
- Measuring place: Anechoic chamber
- Location of microphone

- Operation noise differs with operation and ambient options

FXMQ50P

Octave band sound pressure level $dB(0dB=0.002\mu bar)$

Octave band center frequency (Hz)

Approximate threshold hearing for continuous noise

4D060428

NOTES

- Over All (dB):
(B, G, N is already rectified)

Scale	Air flow rate		
	HH	H	L
A	41.0	39.0	37.0
C	46.0	44.0	42.0

- Operating conditions:
 - Power source: 220-240V 50Hz / 220V 60Hz
 - Cooling - Return air temperature: 27°C DB, 19°C WB
Outdoor temperature: 35°C DB, 24°C WB
 - Heating - Return air temperature: 20°C DB, 15°C WB
Outdoor temperature: 7°C DB, 6°C WB
 - External static Pressure: 100Pa
- Measuring place: Anechoic chamber
- Location of microphone

- Operation noise differs with operation and ambient conditions.

FXMQ63P

Octave band sound pressure level $dB(0dB=0.002\mu bar)$

Octave band center frequency (Hz)

Approximate threshold hearing for continuous noise

4D060447

NOTES

- Over All (dB):
(B, G, N is already rectified)

Scale	Air flow rate		
	HH	H	L
A	42.0	40.0	38.0
C	48.0	46.0	44.0

- Operating conditions:
 - Power source: 220-240V 50Hz / 220V 60Hz
 - Cooling: Return air temperature: 27°C DB, 19°C WB
Outdoor temperature: 35°C DB, 24°C WB
 - Heating: Return air temperature: 20°C DB, 15°C WB
Outdoor temperature: 7°C DB, 6°C WB
 - External static Pressure: 100Pa
- Measuring place: Anechoic chamber
- Location of microphone

- Operation noise differs with operation and ambient conditions.

FXMQ80P

Octave band sound pressure level $dB(0dB=0.002\mu bar)$

Octave band center frequency (Hz)

Approximate threshold hearing for continuous noise

4D060429

NOTES

- Over All (dB):
(B, G, N is already rectified)

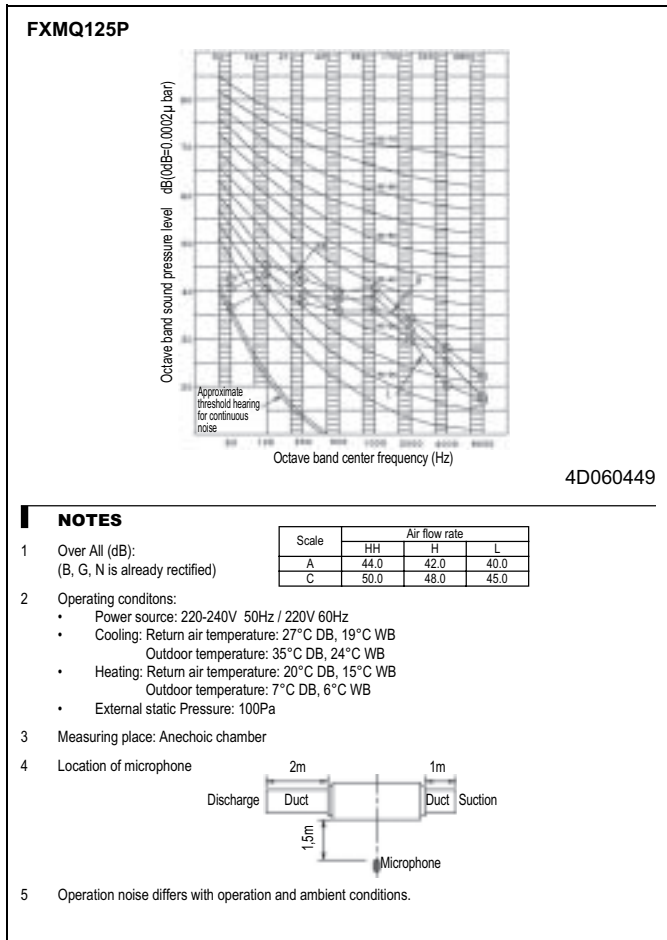
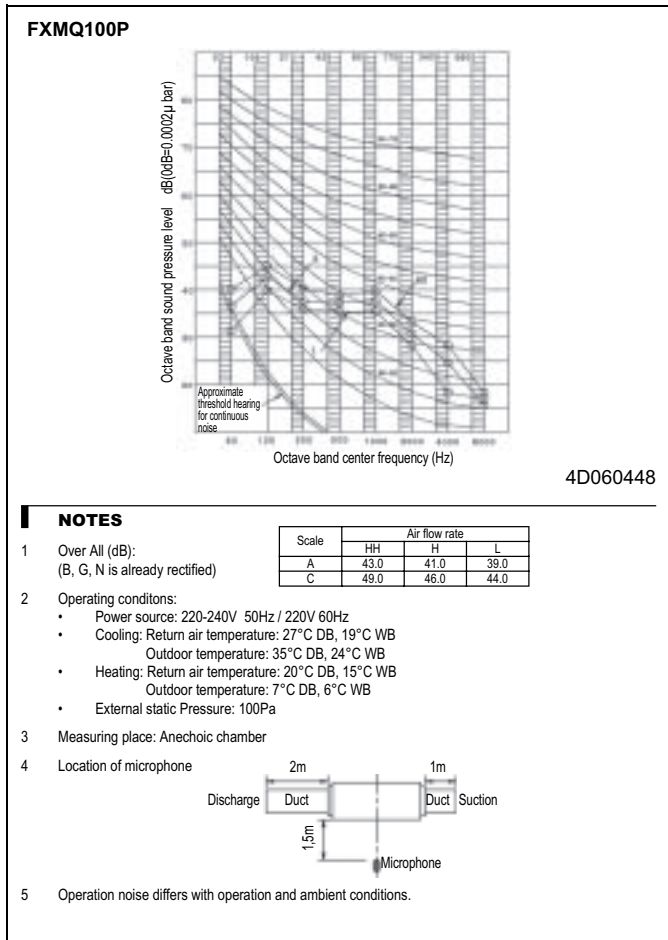
Scale	Air flow rate		
	HH	H	L
A	43.0	41.0	39.0
C	49.0	47.0	45.0

- Operating conditions:
 - Power source: 220-240V 50Hz / 220V 60Hz
 - Cooling: Return air temperature: 27°C DB, 19°C WB
Outdoor temperature: 35°C DB, 24°C WB
 - Heating: Return air temperature: 20°C DB, 15°C WB
Outdoor temperature: 7°C DB, 6°C WB
 - External static Pressure: 100Pa
- Measuring place: Anechoic chamber
- Location of microphone

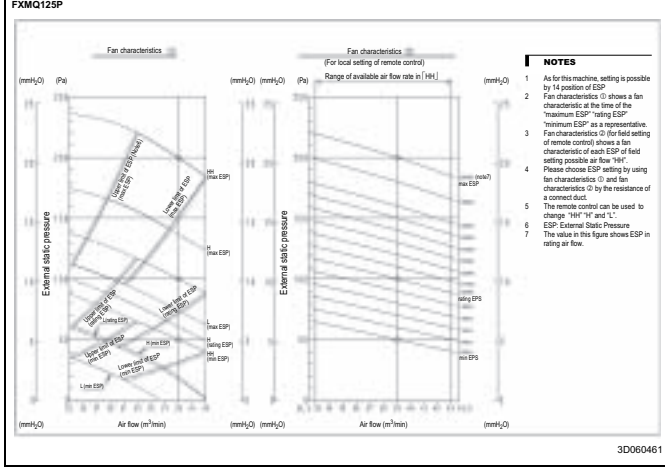
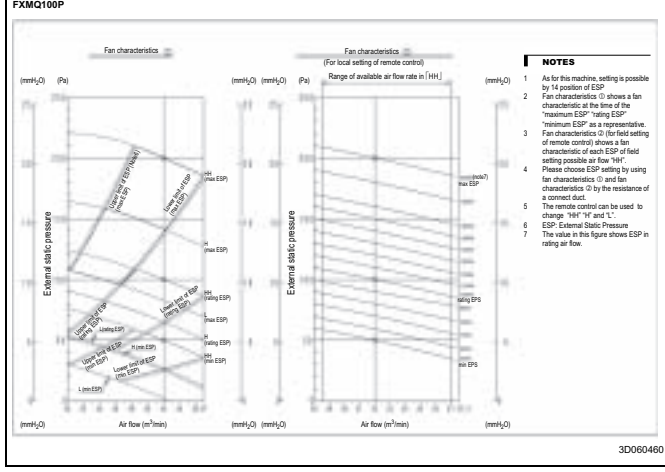
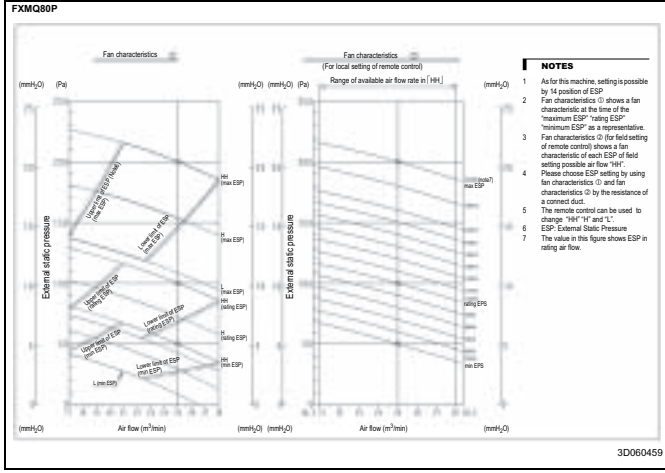
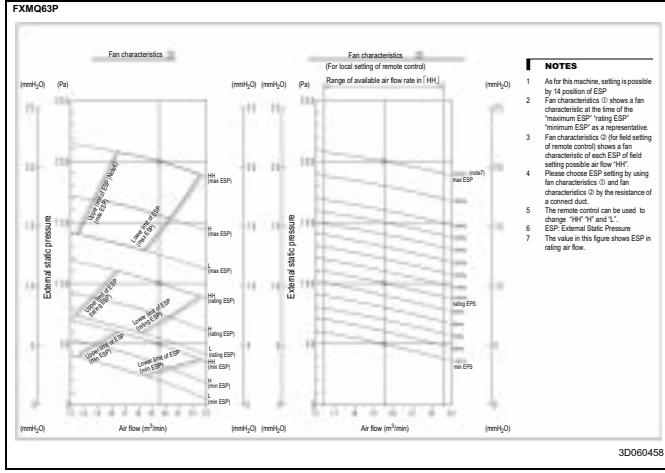
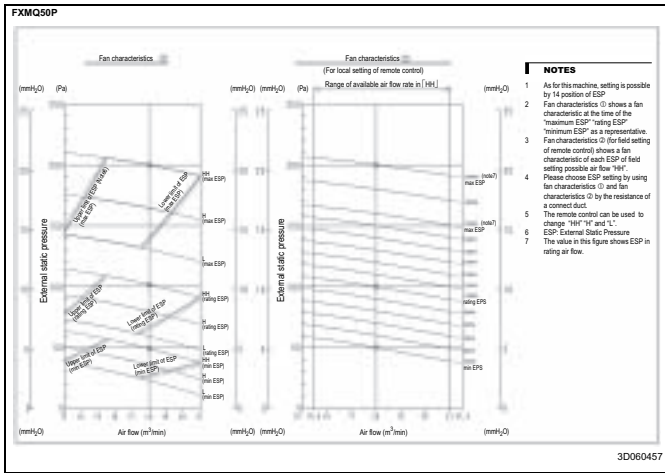
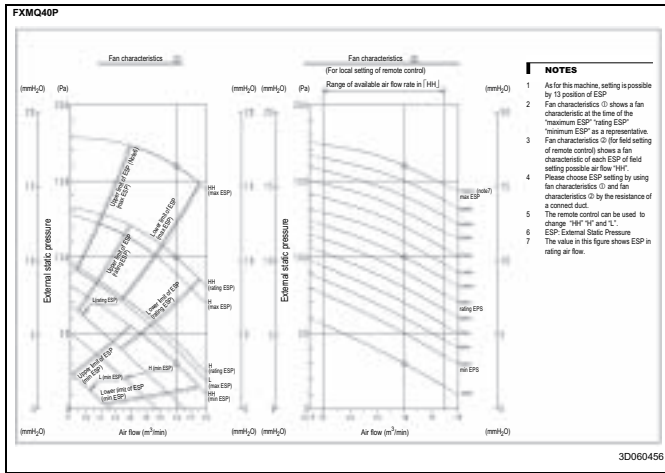
- Operation noise differs with operation and ambient conditions.

8 Sound data

8 - 1 Sound pressure spectrum



9 Fan characteristics



2e

VRV III-S
VRV III
VRV VII



In all of us,
a green heart

Daikin's unique position as a manufacturer of air conditioning equipment, compressors and refrigerants has led to its close involvement in environmental issues. For several years Daikin has had the intension to become a leader in the provision of products that have limited impact on the environment. This challenge demands the eco design and development of a wide range of products and an energy management system, resulting in energy conservation and a reduction of waste.



Daikin Europe N.V. is approved by LRQA for its Quality Management System in accordance with the ISO9001 standard. ISO9001 pertains to quality assurance regarding design, development, manufacturing as well as to services related to the product.



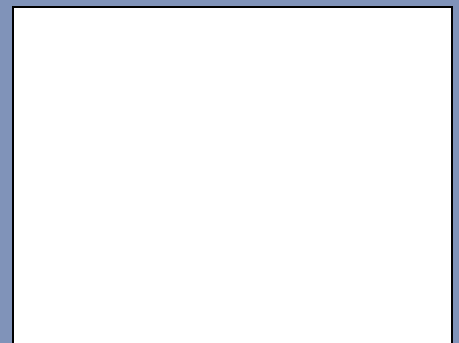
ISO14001 assures an effective environmental management system in order to help protect human health and the environment from the potential impact of our activities, products and services and to assist in maintaining and improving the quality of the environment.



Daikin units comply with the European regulations that guarantee the safety of the product.

VRV® products are not within the scope of the Eurovent certification programme.

The present publication is drawn up by way of information only and does not constitute an offer binding upon Daikin Europe N.V.. Daikin Europe N.V. has compiled the content of this publication to the best of its knowledge. No express or implied warranty is given for the completeness, accuracy, reliability or fitness for particular purpose of its content and the products and services presented therein. Specifications are subject to change without prior notice. Daikin Europe N.V. explicitly rejects any liability for any direct or indirect damage. In the broadest sense, arising from or related to the use and/or interpretation of this publication. All content is copyrighted by Daikin Europe N.V..



DAIKIN EUROPE N.V.

Naamloze Vennootschap
Zandvoordestraat 300
B-8400 Oostende, Belgium
www.daikin.eu
BTW: BE 0412 120 336
RPR Oostende



EEDEN08-204 • 01/2008 • Copyright © Daikin
Prepared in Belgium by Lannoo (www.lannooprint.be), a company whose concern for the environment is set in the EMAS and ISO 14001 systems.
Responsible Editor: Daikin Europe N.V., Zandvoordestraat 300, B-8400 Oostende