



technical data

BS box
BSVQ-PV1

air conditioning systems

VRV[®] III-S

VRV[®] III

VRV[®]-WII

TABLE OF CONTENTS

BSVQ100-250PV1

1	Specifications	2
	Technical Specifications	2
	Electrical Specifications	2
2	Safety device settings	3
3	Options	3
4	Dimensional drawing & centre of gravity	4
	Dimensional drawing	4
	Centre of gravity	6
5	Piping diagram.....	7
6	Wiring diagram.....	8

1 Specifications

1

1-1 TECHNICAL SPECIFICATIONS				BSVQ100PV1	BSVQ160PV1	BSVQ250PV1
Power input (nominal)	Cooling		kW	0.005	0.005	0.005
	Heating		kW	0.005	0.005	0.005
Casing	Material			Galvanised steel		
Dimensions	Unit	Height	mm	207	207	207
		Width	mm	388	388	388
		Depth	mm	326	326	326
Weight	Unit		kg	14.0	14.0	15.0
Outdoor Unit	Liquid (OD)	Type		Braze connection		
		Diameter	mm	9.5	9.5	9.5
	Gas	Type		Braze connection		
		Diameter	mm	15.9	15.9	22.2
	Discharge Gas	Type		Braze connection		
		Diameter	mm	12.7	12.7	19.1
Indoor Units	Liquid (OD)	Type		Braze connection		
		Diameter	mm	9.5	9.5	9.5
	Gas	Type		Braze connection		
		Diameter	mm	15.9	15.9	22.2
Sound absorbing thermal insulation material				Foamed polyurethane, Frame resisting needle felt		
Standard Accessories	Item			Installation manual		
				Attached piping		
				Insulation pipe cover		
				Clamps		
Notes				In case of connection with a 20~50 type indoor unit, match to the size of the field pipe using the attached pipe. Connection between the attached pipe and the field pipe must be brazed.		

1-2 ELECTRICAL SPECIFICATIONS				BSVQ100PV1	BSVQ160PV1	BSVQ250PV1
Power Supply	Phase			1~		
	Frequency		Hz	50	50	50
	Voltage		V	220-240		
Voltage range	Minimum		V	-10%		
	Maximum		V	+10%		
Total circuit	Minimum circuit amps (MCA)		A	0.1	0.1	0.1
	Maximum Fuse Amps		A	15	15	15
Notes				Voltage range : units are suitable for use on electrical systems where voltage supplied to unit terminal is not below or above listed range limits		
				Maximum allowable voltage range variation between phases is 2%		
				MCA / MFA : MCA = 1.25 x FLA		
				MFA is smaller than or equal to 4 x FLA		
				Next lower standard fuse rating minimum 15A		
				Select wire size based on MCA		
				Instead of a fuse, use a circuit breaker		

2 Safety device settings

BSVQ-PV1	100	160	250
PC BOARD FUSE	250V 3.15A		
4D057956			

2

3 Options

BSVQ-PV1	100	160	250
COOL/HEAT SELECTOR	KRC19-26A		
FIXING BOX	KJB111A		

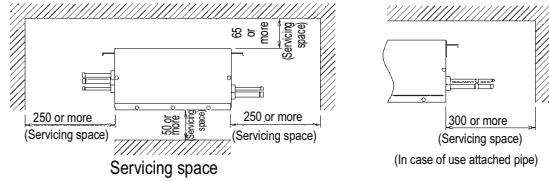
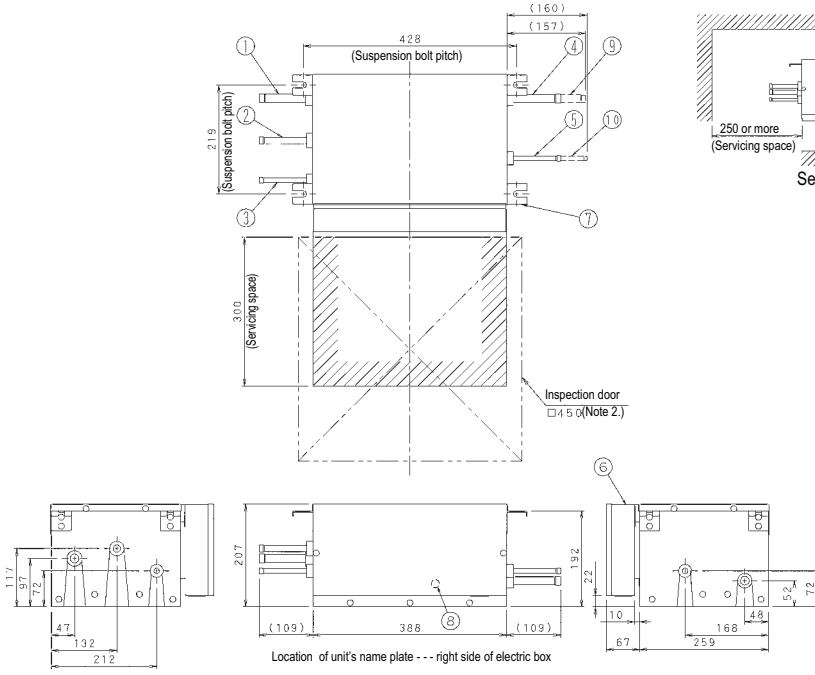
3

4 Dimensional drawing & centre of gravity

4 - 1 Dimensional drawing

4

BSVQ100PV1



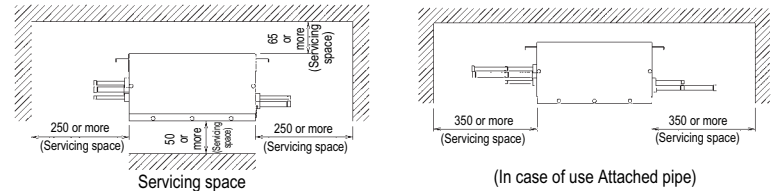
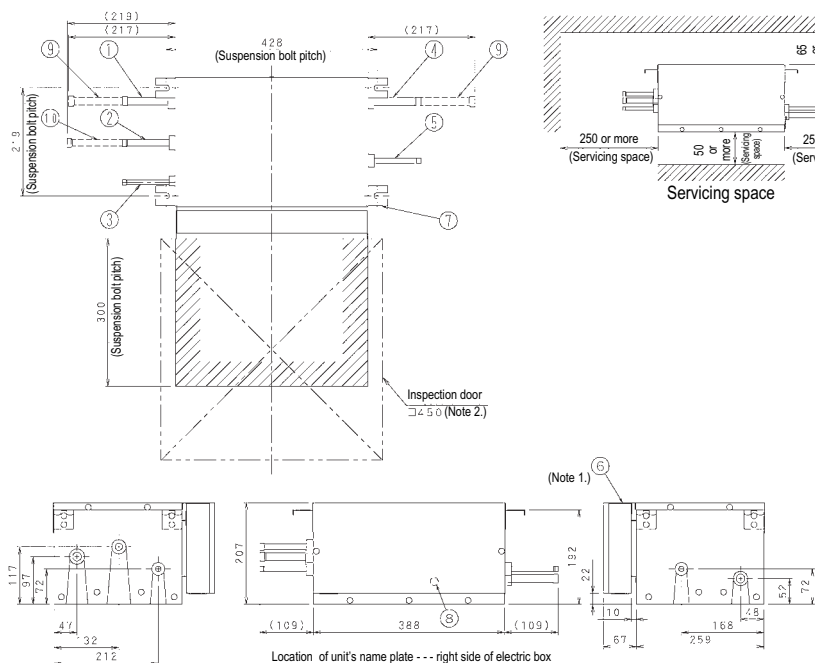
Nr	Name	Description
1	Suction gas pipe connection port	ø15.9mm brazing connection
2	HP/LP gas pipe connection port	ø12.7mm brazing connection
3	Liquid pipe connection port	ø9.5mm brazing connection
4	Gas pipe connection port	ø15.9mm brazing connection
5	Liquid pipe connection port	ø9.5mm brazing connection
6	Electric box (note 1.)	
7	Suspension brackets	M8 ~M10
8	Grounding terminal	M4
9	Attached pipe (1) (Note. 3)	ø12.7mm brazing connection
10	Attached pipe (2) (Note. 3)	ø6.4mm brazing connection

NOTES

- 1 Electric box can also be fixed on the other side of the unit.
- 2 Be sure to install an inspection door at electric box side.
- 3 Attached pipe is only used in case of connecting with a 20~50 class indoor unit.
- 4 Small sound of refrigerant will be made, which may be disturbing.
Do not install it at the place such as bedroom under roof.

3D056011

BSVQ160PV1



Nr	Name	Description
1	Suction gas pipe connection port	ø15.9mm brazing connection
2	HP/LP gas pipe connection port	ø12.7mm brazing connection
3	Liquid pipe connection port	ø9.5mm brazing connection
4	Gas pipe connection port	ø15.9mm brazing connection
5	Liquid pipe connection port	ø9.5mm brazing connection
6	Electric box (note 1.)	
7	Suspension brackets	M8 ~M10
8	Grounding terminal	M4
9	Attached pipe (1) (Note. 3)	ø19.1mm brazing connection
10	Attached pipe (2) (Note. 3)	ø15.9mm brazing connection

NOTES

- 1 Electric box can also be fixed on the other side of the unit.
- 2 Be sure to install an inspection door at electric box side.
- 3 Attached pipe is only used in case of connecting with indoor unit capacity index 150 or more and 160 or less.
- 4 Small sound of refrigerant will be made, which may be disturbing.
Do not install it at the place such as bedroom under roof.

3D058004

4

4 Dimensional drawing & centre of gravity

4 - 1 Dimensional drawing

BSVQ250PV1

(Suspension bolt pitch) 478 (197) (197) 21.6

(Suspension bolt pitch) 21.6

(Servicing space) 300 or more (Servicing space) 65 or more (Servicing space) 300 or more (Servicing space)

5 or more (Servicing space)

400 or more (Servicing space) 400 or more (Servicing space)

(In case of use Attached pipe)

Inspection door □45° (Note 2)

(Note 1)

Location of unit's name plate --- right side of electric box

Nr	Name	Description
1	Suction gas pipe connection port	ø22.2mm brazing connection
2	HP/LP gas pipe connection port	ø19.1mm brazing connection
3	Liquid pipe connection port	ø9.5mm brazing connection
4	Gas pipe connection port	ø22.2mm brazing connection
5	Liquid pipe connection port	ø9.5mm brazing connection
6	Electric box (note 1.)	
7	Suspension brackets	M8 ~M10
8	Grounding terminal	M4
9	Attached pipe (1) (Note. 3)	ø19.1mm brazing connection
10	Attached pipe (2) (Note. 3)	ø15.9mm brazing connection

NOTES

- 1 Electric box can also be fixed on the other side of the unit.
- 2 Be sure to install a inspection door at electric box side.
- 3 Attached pipe (1) and attached pipe (2) is used in case of connecting with indoor capacity index more than 160 and less than 200 In case of connecting one indoor unit of 200 type, only gas pipe connection port need Attached pipe (1).
- 4 Small sound will be made when changing over the motor operated valve, which may be disturbing. Do not install it at the place such as bedroom under roof.

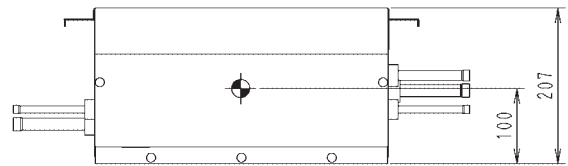
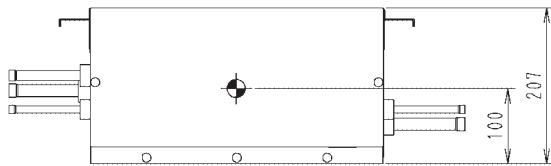
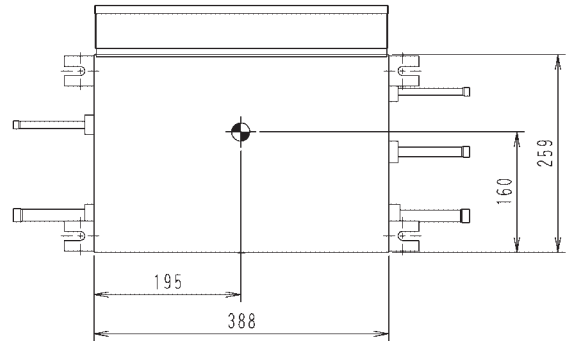
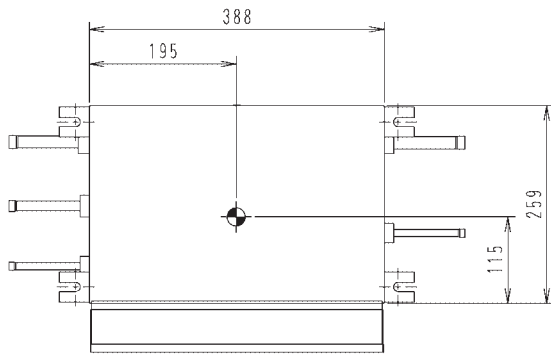
3D056012A

4 Dimensional drawing & centre of gravity

4 - 2 Centre of gravity

4

BSVQ100,160PV1

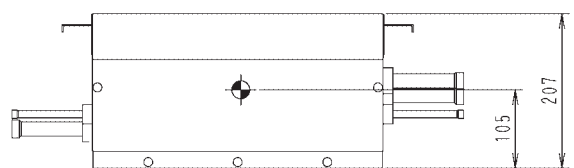
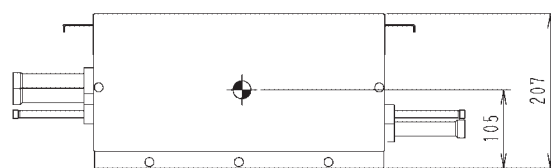
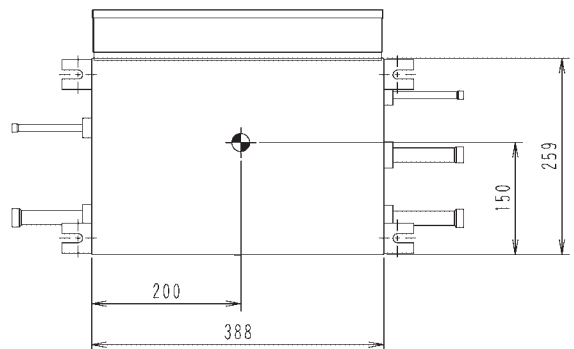
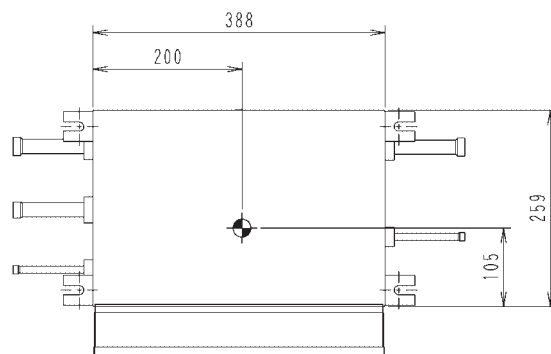


In case of the electrical box on the standard side of the unit

In case of the electrical box on the other side of the unit

3D058131

BSVQ250PV1

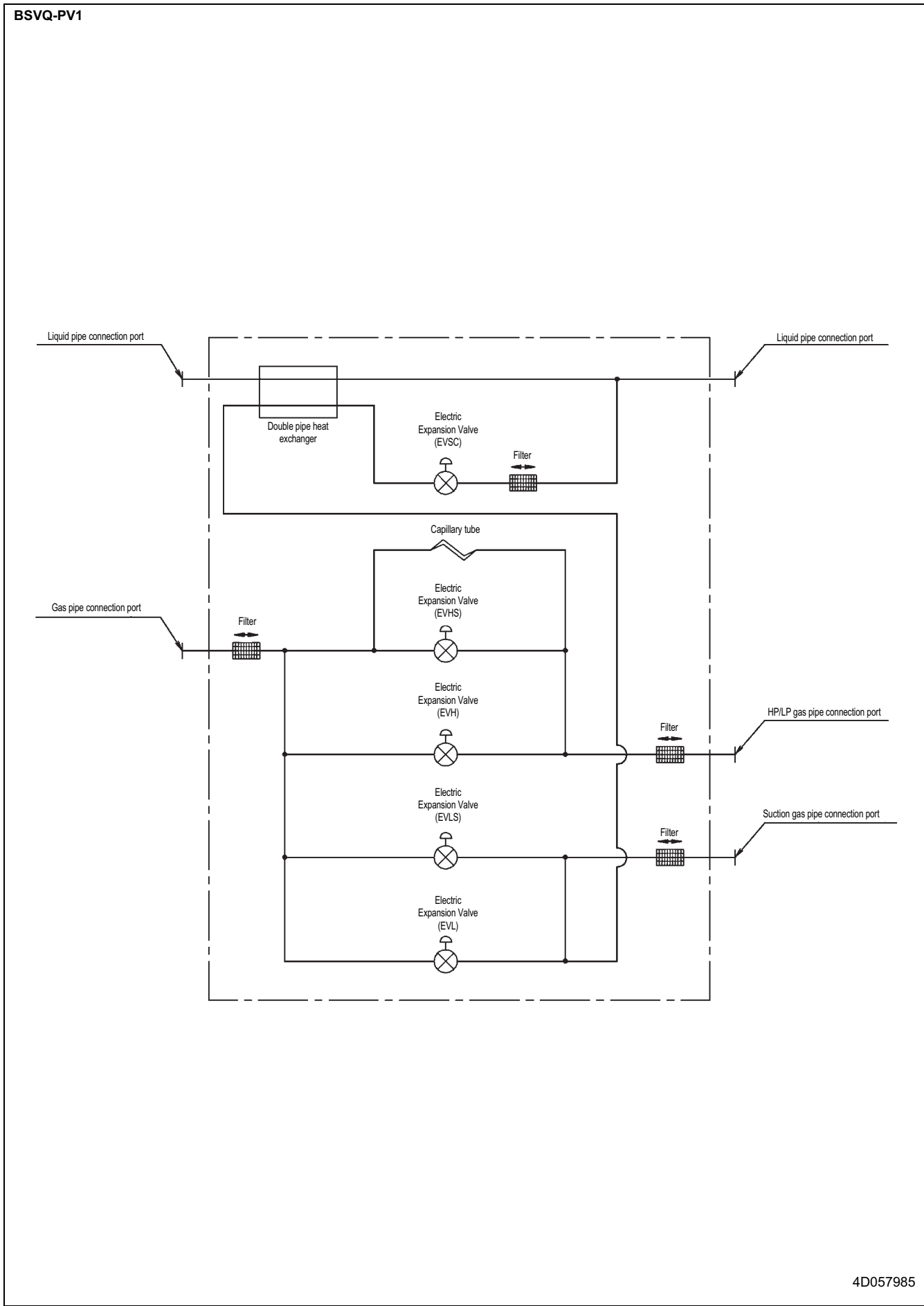


In case of the electrical box on the standard side of the unit

In case of the electrical box on the other side of the unit

3D058132

5 Piping diagram

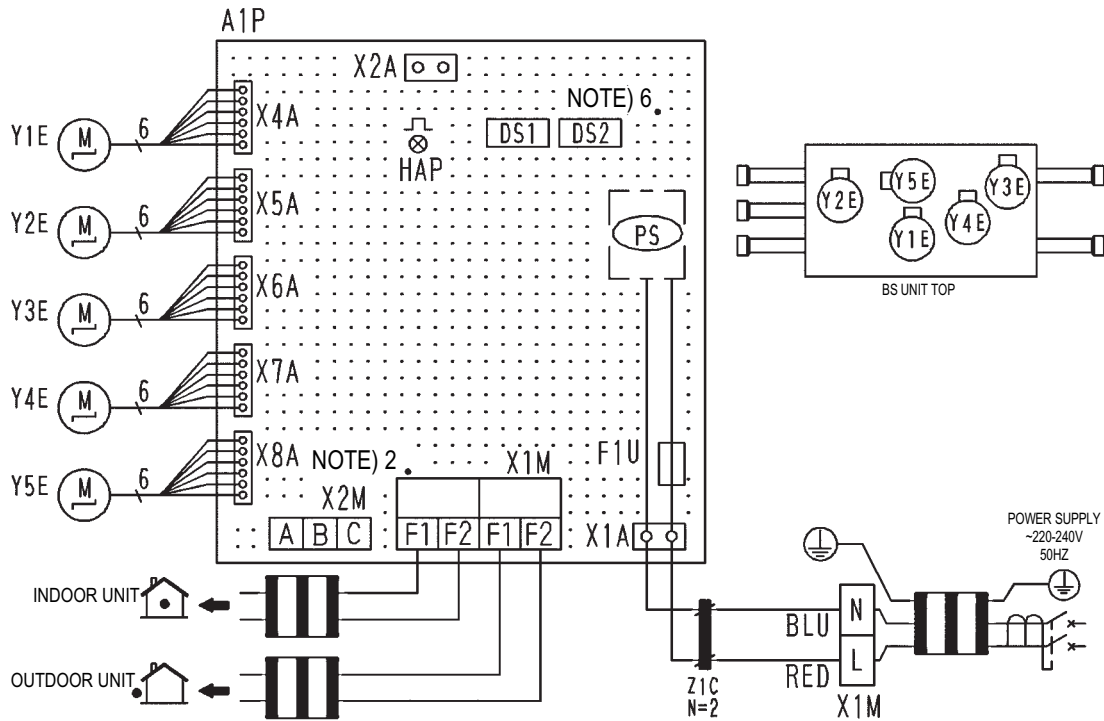


4D057985

6 Wiring diagram

6

BSVQ-PV1



A1P	Printed circuit board	X1M (A1P)	Terminal strip (control)	Y4E	Electric expansion valve (main discharge)
DS1, DS2	Dip switch	X2M	Terminal strip (C/H selector)	Y5E	Electric expansion valve (main suction)
F1U	Fuse (T . 3. 15A. 250V)	Y1E	Electric expansion valve (sub cool)	Z1C	Noise filter (ferrite core)
HAP	Flashing lamp (Service monitor-green)	Y2E	Electric expansion valve (sub discharge)		Connector for optional parts
PS	Switching power supply (A1P)	Y3E	Electric expansion valve (sub suction)	X2A	Connector (wiring external control adapter for outdoor unit)
X1M	Terminal strip (power)				

- : Terminal strip
- : Connector
- : Protective earth
- : Terminal
- : Field wiring

3D055928C

NOTES

- This wiring diagram applies to the BS unit only.
- When using the cool/heat selector (optional accessory), connect it to terminals A, B and C on X2M.
- As for wiring to the IN/D unit (F1) • (F2) and OUT/D unit (F1) • (F2) On X1M(A1P), refer to installation manual.
- Symbols show as follows, (BLU: blue RED: red)
- Use copper conductors only.
- Dip switch (DS1 • 2), initial settings are as follows.



For using Dip switch (DS1 • 2), refer to installation manual or service "precaution label" on el. compo, box, cover.

2

VRV III-S
VRV III
VRV VII



Daikin's unique position as a manufacturer of air conditioning equipment, compressors and refrigerants has led to its close involvement in environmental issues. For several years Daikin has had the intention to become a leader in the provision of products that have limited impact on the environment. This challenge demands the eco design and development of a wide range of products and an energy management system, resulting in energy conservation and a reduction of waste.



Daikin Europe N.V. is approved by LRQA for its Quality Management System in accordance with the ISO9001 standard. ISO9001 pertains to quality assurance regarding design, development, manufacturing as well as to services related to the product.

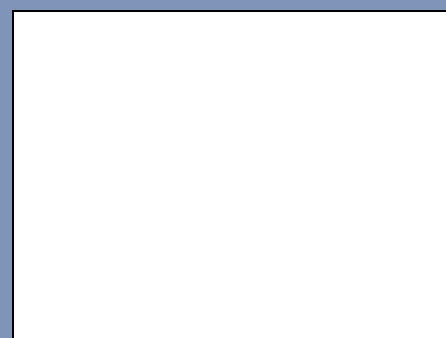


ISO14001 assures an effective environmental management system in order to help protect human health and the environment from the potential impact of our activities, products and services and to assist in maintaining and improving the quality of the environment.



Daikin units comply with the European regulations that guarantee the safety of the product.

The present publication is drawn up by way of information only and does not constitute an offer binding upon Daikin Europe N.V.. Daikin Europe N.V. has compiled the content of this publication to the best of its knowledge. No express or implied warranty is given for the completeness, accuracy, reliability or fitness for particular purpose of its content and the products and services presented therein. Specifications are subject to change without prior notice. Daikin Europe N.V. explicitly rejects any liability for any direct or indirect damage, in the broadest sense, arising from or related to the use and/or interpretation of this publication. All content is copyrighted by Daikin Europe N.V..



DAIKIN EUROPE N.V.

Naamloze Vennootschap
Zandvoordestraat 300
B-8400 Oostende, Belgium
www.daikin.eu
BTW: BE 0412 120 336
RPR Oostende

VRV products are not within the scope of the Eurovent certification programme.



EEDEN07-200 • 07/2007 • Copyright • Daikin
The present publication supersedes EED06-2.
Prepared in Belgium by Lannoo (www.lannooprint.be), a company whose concern for the environment is set in the ENIAS and ISO 14001 systems.
Responsible Editor: Daikin Europe N.V., Zandvoordestraat 300, B-8400 Oostende