



technical data

Concealed Ceiling Unit
FXSQ-P7VEB

air conditioning systems

R-410A



technical data

Concealed Ceiling Unit
FXSQ-P7VEB

air conditioning systems

R-410A

TABLE OF CONTENTS

FXSQ-P7VEB

1	Specifications	2
	Technical Specifications	2
	Electrical Specifications (50Hz)	5
	Electrical Specifications (60Hz)	5
2	Electrical data	6
3	Safety device settings	7
4	Options	7
5	Capacity tables	8
	Cooling capacity tables	8
	Heating capacity tables	10
6	Dimensional drawing & centre of gravity	12
	Dimensional drawing	12
	Centre of gravity	14
7	Piping diagram	15
8	Wiring diagram	16
	Wiring diagram	16
9	Sound data	17
	Sound pressure spectrum	17
	Sound power spectrum	19
10	Fan characteristics	21
11	Installation	25
	Installation method	25
	Filter installation method	26
	Switch box connection	27

1 Specifications

1-1 Technical Specifications				FXSQ20P7VEB	FXSQ25P7VEB	FXSQ32P7VEB	FXSQ40P7VEB	FXSQ50P7VEB	
Capacity	Cooling	kW		2.2	2.8	3.6	4.5	5.6	
	Heating	kW		2.5	3.2	4.0	5.0	6.3	
Power Input (50Hz)	Cooling	kW		0.073	0.073	0.079	0.192	0.192	
	Heating	kW		0.061	0.061	0.067	0.180	0.180	
Power Input (60Hz)	Cooling	kW		0.073	0.073	0.079	0.192	0.192	
	Heating	kW		0.061	0.061	0.067	0.180	0.180	
Casing	Colour	Non painted							
	Material	Galvanised steel							
Dimensions	Packing	Height	mm	355					
		Width	mm	770	770	770	920	920	
		Depth	mm	900					
	Unit	Height	mm	300					
		Width	mm	550	550	550	700	700	
		Depth	mm	700					
Weight	Unit	kg		23	23	23	26	26	
	Packed Unit	kg		28	28	28	32	32	
Required Ceiling Void			mm	>350					
Heat Exchanger	Dimensions	Length	mm	290	290	290	440	440	
		Nr of Rows	3						
		Fin Pitch	mm	1.75					
		Nr of Passes	3		3	3	4	4	
		Face Area	m ²	0.097	0.097	0.097	0.148	0.148	
		Nr of Stages	16						
		Empty Tubeplate Hole	12						
	Tube type	Hi-XSS (7)							
	Fin	Fin type	Symmetric waffle louvre						
		Treatment	Hydrophilic						
Fan	Type	Sirocco fan							
	Quantity	1							
Cooling	High	m ³ /min	9	9	9.5	16	16		
	Low	m ³ /min	6.5	6.5	7	11	11		
Heating	High	m ³ /min	9	9	9.5	16	16		
	Low	m ³ /min	6.5	6.5	7	11	11		
Fan	External static pressure	High	Pa	70	70	70	100	100	
		Standard	Pa	30					
	Motor	Quantity	1						
		Model	Brushless DC motor						
Motor	Speed (cooling)	High	rpm	1,031	1,031	1,061	1,186	1,186	
		Low	rpm	802	802	827	875	875	
	Speed (heating)	High	rpm	1,031	1,031	1,061	1,186	1,186	
		Low	rpm	802	802	827	875	875	
Fan	Motor	Output (high)	W	90	90	90	140	140	
		Drive	Direct drive						
Refrigerant	Name		R-410A						
Sound level	Cooling	Sound power (nominal)	dB	55	55	56	63	63	
Cooling	Sound Pressure	High	dB	32	32	33	37	37	
		Low	dB	26	26	27	29	29	
Heating	Sound Pressure	High	dB	32	32	33	37	37	
		Low	dB	26	26	27	29	29	
Piping connections	Liquid (OD)	Type	Flare connection						
		Diameter	mm	6.35					
	Gas	Type	Flare connection						
		Diameter	mm	12.7					
	Drain	Diameter	mm	VP25 (O.D. 32 / I.D. 25)					
Heat Insulation	Both liquid and gas pipes								

1 Specifications

1-1 Technical Specifications				FXSQ20P7VEB	FXSQ25P7VEB	FXSQ32P7VEB	FXSQ40P7VEB	FXSQ50P7VEB
Decoration Panel	Model			BYBS32DJW1	BYBS32DJW1	BYBS32DJW1	BYBS45DJW1	BYBS45DJW1
	Colour			White (10Y9/0,5)				
	Dimensions	Height	mm	55				
		Width	mm	650	650	650	800	800
		Depth	mm	500				
Weight			3.0	3.0	3.0	3.5	3.5	
Drain-up Height			mm 625					
Air Filter			Resin net with mold resistance					
Refrigerant control			Electronic expansion valve					
Safety devices			PC board fuse					
			PC board fuse (fan driver)					
			Drain pump fuse					
Notes			Nominal cooling capacities are based on : indoor temperature : 27°CDB, 19°CWB, outdoor temperature : 35°CDB, equivalent refrigerant piping : 7.5m, level difference : 0m.					
			Nominal heating capacities are based on : indoor temperature : 20°CDB, outdoor temperature : 7°CDB, 6°CWB, equivalent refrigerant piping : 7.5m, level difference : 0m.					
			Capacities are net, including a deduction for cooling (an addition for heating) for indoor fan motor heat.					
			The sound pressure values are mentioned for a unit installed with rear suction					

1-1 TECHNICAL SPECIFICATIONS				FXSQ63P7VEB	FXSQ80P7VEB	FXSQ100P7VEB	FXSQ125P7VEB
Capacity	Cooling	kW	7.1	9.0	11.2	14.0	
	Heating	kW	8.0	10.0	12.5	16.0	
Power Input (50Hz)	Cooling	kW	0.142	0.163	0.247	0.303	
	Heating	kW	0.130	0.151	0.235	0.291	
Power Input (60Hz)	Cooling	kW	0.142	0.163	0.247	0.303	
	Heating	kW	0.130	0.151	0.235	0.291	
Casing	Colour			Non painted			
	Material			Galvanised steel			
Dimensions	Packing	Height	mm	355			
		Width	mm	1,220	1,220	1,620	1,620
		Depth	mm	900			
	Unit	Height	mm	300			
		Width	mm	1,000	1,000	1,400	1,400
		Depth	mm	700			
Weight	Unit		kg	35	35	46	46
	Packed Unit		kg	42	42	54	54
Required Ceiling Void			mm >350				
Heat Exchanger	Dimensions	Length	mm	740	740	1,140	1,140
		Nr of Rows		3			
		Fin Pitch	mm	1.75			
		Nr of Passes		7	7	11	11
		Face Area	m ²	0.249	0.249	0.383	0.383
		Nr of Stages		16			
	Tube type			Hi-XSS (7)			
	Fin	Fin type		Symmetric waffle louvre			
Treatment		Hydrophilic					
Fan	Type			Sirocco fan			
	Quantity			2	2	3	3
Cooling	High	m ³ /min	19.5	25	32	39	
	Low	m ³ /min	16	20	23	28	
Heating	High	m ³ /min	19.5	25	32	39	
	Low	m ³ /min	16	20	23	28	
Fan	External static pressure	High	Pa	100	100	120	120
		Standard	Pa	30	40	40	50
	Motor	Quantity		1			
		Model		Brushless DC motor			
		Steps		8			

1 Specifications

1-1 TECHNICAL SPECIFICATIONS				FXSQ63P7VEB	FXSQ80P7VEB	FXSQ100P7VEB	FXSQ125P7VEB
Motor	Speed (cooling)	High	rpm	975	1,161	1,060	1,218
		Low	rpm	840	960	813	920
	Speed (heating)	High	rpm	975	1,161	1,060	1,218
		Low	rpm	840	960	813	920
Fan	Motor	Output (high)	W	350			
		Drive		Direct drive			
Refrigerant	Name			R-410A			
Sound level	Cooling	Sound power (nominal)	dBa	59	63	61	66
Cooling	Sound Pressure	High	dBa	37	38	38	40
		Low	dBa	30	32	32	33
Heating	Sound Pressure	High	dBa	37	38	38	40
		Low	dBa	30	32	32	33
Piping connections	Liquid (OD)	Type		Flare connection			
		Diameter	mm	9.52			
	Gas	Type		Flare connection			
		Diameter	mm	15.9			
	Drain	Diameter	mm	VP25 (O.D. 32 / I.D. 25)			
Heat Insulation			Both liquid and gas pipes				
Decoration Panel	Model			BYBS71DJW1	BYBS71DJW1	BYBS125DJW1	BYBS125DJW1
	Colour			White (10Y9/0,5)			
	Dimensions	Height	mm	55			
		Width	mm	1,100	1,100	1,500	1,500
		Depth	mm	500			
Weight			kg	4.5	4.5	6.5	6.5
Drain-up Height			mm	625			
Air Filter			Resin net with mold resistance				
Refrigerant control			Electronic expansion valve				
Safety devices			PC board fuse				
			PC board fuse (fan driver)				
			Drain pump fuse				
Notes			Nominal cooling capacities are based on : indoor temperature : 27°CDB, 19°CWB, outdoor temperature : 35°CDB, equivalent refrigerant piping : 7.5m, level difference : 0m.				
			Nominal heating capacities are based on : indoor temperature : 20°CDB, outdoor temperature : 7°CDB, 6°CWB, equivalent refrigerant piping : 7.5m, level difference : 0m.				
			Capacities are net, including a deduction for cooling (an addition for heating) for indoor fan motor heat.				
			The sound pressure values are mentioned for a unit installed with rear suction				

1 Specifications

1-2 Electrical Specifications (50Hz)			FXSQ20P7VEB	FXSQ25P7VEB	FXSQ32P7VEB	FXSQ40P7VEB	FXSQ50P7VEB
Power Supply	Name		VE				
	Frequency	Hz	50				
	Voltage	V	220-240				
Current	Minimum circuit amps (MCA)	A	0.4	0.4	0.4	1.2	1.2
	Maximum fuse amps (MFA)	A	16				
Voltage range	Minimum	V	-10%				
	Maximum	V	+10%				
Notes			Voltage range : units are suitable for use on electrical systems where voltage supplied to unit terminals is not below or above listed range limits.				
			Maximum allowable voltage range variation between phases is 2%.				
			Select wire size based on the MCA				
			Instead of a fuse, use a circuit breaker				

1-2 ELECTRICAL SPECIFICATIONS (50HZ)			FXSQ63P7VEB	FXSQ80P7VEB	FXSQ100P7VEB	FXSQ125P7VEB
Power Supply	Name		VE			
	Frequency	Hz	50			
	Voltage	V	220-240			
Current	Minimum circuit amps (MCA)	A	1.1	1.3	1.6	2.1
	Maximum fuse amps (MFA)	A	16			
Voltage range	Minimum	V	-10%			
	Maximum	V	+10%			
Notes			Voltage range : units are suitable for use on electrical systems where voltage supplied to unit terminals is not below or above listed range limits.			
			Maximum allowable voltage range variation between phases is 2%.			
			Select wire size based on the MCA			
			Instead of a fuse, use a circuit breaker			

1-3 Electrical Specifications (60Hz)			FXSQ20P7VEB	FXSQ25P7VEB	FXSQ32P7VEB	FXSQ40P7VEB	FXSQ50P7VEB
Power Supply	Name		VE				
	Frequency	Hz	60				
	Voltage	V	220				
Current	Minimum circuit amps (MCA)	A	0.4	0.4	0.4	1.2	1.2
	Maximum fuse amps (MFA)	A	16				
Voltage range	Minimum	V	-10%				
	Maximum	V	+10%				
Notes			Voltage range : units are suitable for use on electrical systems where voltage supplied to unit terminals is not below or above listed range limits.				
			Maximum allowable voltage range variation between phases is 2%.				
			Select wire size based on the MCA				
			Instead of a fuse, use a circuit breaker				

1-3 ELECTRICAL SPECIFICATIONS (60HZ)			FXSQ63P7VEB	FXSQ80P7VEB	FXSQ100P7VEB	FXSQ125P7VEB
Power Supply	Name		VE			
	Frequency	Hz	60			
	Voltage	V	220			
Current	Minimum circuit amps (MCA)	A	1.1	1.3	1.6	2.1
	Maximum fuse amps (MFA)	A	16			
Voltage range	Minimum	V	-10%			
	Maximum	V	+10%			
Notes			Voltage range : units are suitable for use on electrical systems where voltage supplied to unit terminals is not below or above listed range limits.			
			Maximum allowable voltage range variation between phases is 2%.			
			Select wire size based on the MCA			
			Instead of a fuse, use a circuit breaker			

2 Electrical data

FXSQ-P

Model	Type	Units				Power supply	
		Hz	Volts	Min.	Max.	MCA	MFA
FXSQ20	VE	50/60	220~240V / 220V	-10%	+10%	0.4	16
FXSQ25						0.4	16
FXSQ32						0.4	16
FXSQ40						1.2	16
FXSQ50						1.2	16
FXSQ63						1.1	16
FXSQ80						1.3	16
FXSQ100						1.6	16
FXSQ125						2.1	16

SYMBOLS

MCA: Min. Circuit Amps (A)
MFA: Max. Fuse Amps (A) (See note 4)

NOTES

- 1 Voltage range
The volts are suitable for use on electrical systems where the voltage supplied to the unit terminals is not below or above listed range limits.
- 2 The maximum allowable voltage variation between phases is 2%.
- 3 Select a wire size based on the MCA.
- 4 Instead of a fuse, use a circuit breaker.

4TW31181-2

3 Safety device settings

Safety devices		20	25	32	40	50	63	80	100	125
FXSQ	PC Board Fuse	250V 3.15A	250V 3.15A	250V 3.15A	250V 3.15A	250V 3.15A	250V 3.15A	250V 3.15A	250V 3.15A	250V 3.15A
	PC Board Fuse (Fan Driver)	250V 5A	250V 5A	250V 5A	250V 5A	250V 5A	250V 6.3A	250V 6.3A	250V 6.3A	250V 6.3A
	Fan Motor Thermal Protector	°C	—	—	—	—	—	—	—	—
	Drain Pump Fuse	°C	145	145	145	145	145	145	145	145

4 Options

FXSQ20-125P

Options

Item	Type	FXSQ20,25,32	FXSQ40,50	FXSQ63,80	FXSQ100,125
Panel related	Decoration panel	BYBS32	BYBS45D	BYBS71D	BYBS125D
Air inlet and air discharge outlet related	Air discharge adapter for round duct	KDAJ25K36A	KDAJ25K56A	KDAJ25KA71A	KDAJ25KA140A

Operation Control

Item	Type	FXSQ20,25,32	FXSQ40,50	FXSQ63,80	FXSQ100,125
Remote Control	Wired Type			BRC1D528	
	Infrared type			BRC4C65	
				BRC4C66	
Simplified remote control				BRC2C51	
Remote control for hotel use				BRC3A61	
Option BCB for external el. heater, humidifier and/or hour meter (*1), (*2), (*3), (*4)				EKRP1B2A	
Adapter for wiring (interlock for fresh air intake fan) (*4)				KRP1C64	
Wiring adapter for electrical appendices (1) (*2), (*4)				KRP2A51	
Wiring adapter for electrical appendices (2) (*4)				KRP4A51	
Remote sensor				KRCS01-4B	
Central remote control				DCS302CA51	
Electrical box with earth terminal (3 blocks)				KJB311A	
Unified ON/OFF control				DCS301BA51	
Electrical box with earth terminal (2 blocks)				KJB212A	
Schedule timer				DST301BA51	
External adapter for outdoor unit (installation on indoor unit) (*4)				DTA104A61	
Mounting plate for adapter PCB				KRP4A96	

NOTES

- (*1): Electrical heater and humidifier are field supply. These parts should not be installed inside the equipment (refer to installation manual EKRP1B2A)
- (*2): If installing an electrical heater, an option PCB for external heater (EKRP1B2) for each indoor unit is required.
- (*3): An electrical heater can not be used for VRV system cooling only.
- (*4): Mounting plate KRP4A96 is required for these options. Maximum 2 option PCB's can be mounted.

Contents of accessory bag

Description	Quantity
	FMDQ50,60,71,100,125
Hexagon tapping screw (M5x16)	16
Round plain washer for wood	8
Installation and operation manual	1
Hose band	1
Insulation for joint (GAS)	1
Insulation for joint (LIQUID)	1
Drain hose	1
Drain hose sealing material	1
Sealing material	2

3TW31189-3B

5 Capacity tables

5 - 1 Cooling capacity tables

FXSQ-P7		TC: Total Capacity: kW ; SHC: Sensible heat capacity: kW													
Unit size	Outdoor air temp. (°CDB)	Indoor air temperature													
		14.0WB		16.0WB		18.0WB		19.0WB		20.0WB		22.0WB		24.0WB	
		20.0DB		23.0DB		26.0DB		27.0DB		28.0DB		30.0DB		32.0DB	
		TC	SHC	TC	SHC	TC	SHC	TC	SHC	TC	SHC	TC	SHC	TC	SHC
20	10.0	1.5	1.5	1.8	1.8	2.1	1.9	2.2	1.9	2.3	1.9	2.6	2.0	2.8	2.1
	12.0	1.5	1.5	1.8	1.8	2.1	1.9	2.2	1.9	2.3	1.9	2.6	2.0	2.7	2.0
	14.0	1.5	1.5	1.8	1.8	2.1	1.9	2.2	1.9	2.3	1.9	2.6	2.0	2.7	2.0
	16.0	1.5	1.5	1.8	1.8	2.1	1.9	2.2	1.9	2.3	1.9	2.6	2.0	2.7	2.0
	18.0	1.5	1.5	1.8	1.8	2.1	1.9	2.2	1.9	2.3	1.9	2.6	2.0	2.6	2.0
	20.0	1.5	1.5	1.8	1.8	2.1	1.9	2.2	1.9	2.3	1.9	2.5	1.9	2.6	2.0
	21.0	1.5	1.5	1.8	1.8	2.1	1.9	2.2	1.9	2.3	1.9	2.5	1.9	2.6	2.0
	23.0	1.5	1.5	1.8	1.8	2.1	1.9	2.2	1.9	2.3	1.9	2.5	1.9	2.5	1.9
	25.0	1.5	1.5	1.8	1.8	2.1	1.9	2.2	1.9	2.3	1.9	2.5	1.9	2.5	1.9
	27.0	1.5	1.5	1.8	1.8	2.1	1.9	2.2	1.9	2.3	1.9	2.4	1.9	2.5	1.9
	29.0	1.5	1.5	1.8	1.8	2.1	1.9	2.2	1.9	2.3	1.9	2.4	1.8	2.4	1.9
	31.0	1.5	1.5	1.8	1.8	2.1	1.9	2.2	1.9	2.3	1.9	2.4	1.8	2.4	1.8
	33.0	1.5	1.5	1.8	1.8	2.1	1.9	2.2	1.9	2.3	1.9	2.3	1.8	2.4	1.8
	35.0	1.5	1.5	1.8	1.8	2.1	1.9	2.2	1.9	2.2	1.9	2.3	1.8	2.3	1.8
	37.0	1.5	1.5	1.8	1.8	2.1	1.9	2.2	1.9	2.2	1.8	2.2	1.7	2.3	1.8
	39.0	1.5	1.5	1.8	1.8	2.1	1.9	2.1	1.9	2.2	1.8	2.2	1.7	2.3	1.8
	25	10.0	1.9	1.8	2.3	2.0	2.6	2.3	2.8	2.3	3.0	2.3	3.3	2.4	3.5
12.0		1.9	1.8	2.3	2.0	2.6	2.3	2.8	2.3	3.0	2.3	3.3	2.4	3.5	2.4
14.0		1.9	1.8	2.3	2.0	2.6	2.3	2.8	2.3	3.0	2.3	3.3	2.4	3.4	2.4
16.0		1.9	1.8	2.3	2.0	2.6	2.3	2.8	2.3	3.0	2.3	3.3	2.4	3.4	2.4
18.0		1.9	1.8	2.3	2.0	2.6	2.3	2.8	2.3	3.0	2.3	3.3	2.4	3.4	2.4
20.0		1.9	1.8	2.3	2.0	2.6	2.3	2.8	2.3	3.0	2.3	3.2	2.3	3.3	2.3
21.0		1.9	1.8	2.3	2.0	2.6	2.3	2.8	2.3	3.0	2.3	3.2	2.3	3.3	2.3
23.0		1.9	1.8	2.3	2.0	2.6	2.3	2.8	2.3	3.0	2.3	3.2	2.3	3.2	2.3
25.0		1.9	1.8	2.3	2.0	2.6	2.3	2.8	2.3	3.0	2.3	3.1	2.3	3.2	2.3
27.0		1.9	1.8	2.3	2.0	2.6	2.3	2.8	2.3	3.0	2.3	3.1	2.2	3.2	2.3
29.0		1.9	1.8	2.3	2.0	2.6	2.3	2.8	2.3	3.0	2.3	3.0	2.2	3.1	2.2
31.0		1.9	1.8	2.3	2.0	2.6	2.3	2.8	2.3	2.9	2.3	3.0	2.2	3.1	2.2
33.0		1.9	1.8	2.3	2.0	2.6	2.3	2.8	2.3	2.9	2.3	2.9	2.2	3.0	2.2
35.0		1.9	1.8	2.3	2.0	2.6	2.3	2.8	2.3	2.8	2.2	2.9	2.1	3.0	2.2
37.0		1.9	1.8	2.3	2.0	2.6	2.3	2.8	2.3	2.8	2.2	2.9	2.1	2.9	2.1
39.0		1.9	1.8	2.3	2.0	2.6	2.3	2.7	2.2	2.7	2.2	2.8	2.1	2.9	2.1
32		10.0	2.4	2.2	2.9	2.5	3.4	2.8	3.6	2.9	3.8	2.9	4.3	3.0	4.6
	12.0	2.4	2.2	2.9	2.5	3.4	2.8	3.6	2.9	3.8	2.9	4.3	3.0	4.5	3.0
	14.0	2.4	2.2	2.9	2.5	3.4	2.8	3.6	2.9	3.8	2.9	4.3	3.0	4.4	3.0
	16.0	2.4	2.2	2.9	2.5	3.4	2.8	3.6	2.9	3.8	2.9	4.3	3.0	4.4	3.0
	18.0	2.4	2.2	2.9	2.5	3.4	2.8	3.6	2.9	3.8	2.9	4.2	3.0	4.3	2.9
	20.0	2.4	2.2	2.9	2.5	3.4	2.8	3.6	2.9	3.8	2.9	4.2	2.9	4.3	2.9
	21.0	2.4	2.2	2.9	2.5	3.4	2.8	3.6	2.9	3.8	2.9	4.1	2.9	4.2	2.9
	23.0	2.4	2.2	2.9	2.5	3.4	2.8	3.6	2.9	3.8	2.9	4.1	2.9	4.2	2.9
	25.0	2.4	2.2	2.9	2.5	3.4	2.8	3.6	2.9	3.8	2.9	4.0	2.9	4.1	2.8
	27.0	2.4	2.2	2.9	2.5	3.4	2.8	3.6	2.9	3.8	2.9	4.0	2.8	4.1	2.8
	29.0	2.4	2.2	2.9	2.5	3.4	2.8	3.6	2.9	3.8	2.9	3.9	2.8	4.0	2.8
	31.0	2.4	2.2	2.9	2.5	3.4	2.8	3.6	2.9	3.8	2.9	3.8	2.8	3.9	2.7
	33.0	2.4	2.2	2.9	2.5	3.4	2.8	3.6	2.9	3.7	2.8	3.8	2.7	3.9	2.7
	35.0	2.4	2.2	2.9	2.5	3.4	2.8	3.6	2.9	3.6	2.8	3.7	2.7	3.8	2.7
	37.0	2.4	2.2	2.9	2.5	3.4	2.8	3.5	2.8	3.6	2.8	3.7	2.7	3.8	2.7
	39.0	2.4	2.2	2.9	2.5	3.4	2.8	3.5	2.8	3.5	2.7	3.6	2.6	3.7	2.6
	40	10.0	3.0	2.9	3.6	3.4	4.2	3.8	4.5	3.8	4.8	3.8	5.4	3.9	5.7
12.0		3.0	2.9	3.6	3.4	4.2	3.8	4.5	3.8	4.8	3.8	5.4	3.9	5.6	4.0
14.0		3.0	2.9	3.6	3.4	4.2	3.8	4.5	3.8	4.8	3.8	5.4	3.9	5.5	4.0
16.0		3.0	2.9	3.6	3.4	4.2	3.8	4.5	3.8	4.8	3.8	5.4	3.9	5.5	3.9
18.0		3.0	2.9	3.6	3.4	4.2	3.8	4.5	3.8	4.8	3.8	5.3	3.9	5.4	3.9
20.0		3.0	2.9	3.6	3.4	4.2	3.8	4.5	3.8	4.8	3.8	5.2	3.8	5.3	3.9
21.0		3.0	2.9	3.6	3.4	4.2	3.8	4.5	3.8	4.8	3.8	5.2	3.8	5.3	3.8
23.0		3.0	2.9	3.6	3.4	4.2	3.8	4.5	3.8	4.8	3.8	5.1	3.8	5.2	3.8
25.0		3.0	2.9	3.6	3.4	4.2	3.8	4.5	3.8	4.8	3.8	5.0	3.7	5.1	3.8
27.0		3.0	2.9	3.6	3.4	4.2	3.8	4.5	3.8	4.8	3.8	5.0	3.7	5.1	3.7
29.0		3.0	2.9	3.6	3.4	4.2	3.8	4.5	3.8	4.8	3.8	4.9	3.7	5.0	3.7
31.0		3.0	2.9	3.6	3.4	4.2	3.8	4.5	3.8	4.7	3.8	4.8	3.6	4.9	3.6
33.0		3.0	2.9	3.6	3.4	4.2	3.8	4.5	3.8	4.6	3.7	4.7	3.6	4.8	3.6
35.0		3.0	2.9	3.6	3.4	4.2	3.8	4.5	3.8	4.6	3.7	4.7	3.5	4.8	3.6
37.0		3.0	2.9	3.6	3.4	4.2	3.8	4.4	3.8	4.5	3.6	4.6	3.5	4.7	3.5
39.0		3.0	2.9	3.6	3.4	4.2	3.8	4.4	3.7	4.4	3.6	4.5	3.4	4.6	3.5
50		10.0	3.8	3.6	4.5	3.9	5.2	3.8	5.6	4.4	6.0	4.5	6.7	4.1	7.1
	12.0	3.8	3.6	4.5	3.9	5.2	3.8	5.6	4.4	6.0	4.5	6.7	4.1	7.0	4.7
	14.0	3.8	3.6	4.5	3.9	5.2	3.8	5.6	4.4	6.0	4.5	6.7	4.1	6.9	4.6
	16.0	3.8	3.6	4.5	3.9	5.2	3.8	5.6	4.4	6.0	4.5	6.7	4.1	6.8	4.6
	18.0	3.8	3.6	4.5	3.9	5.2	3.8	5.6	4.4	6.0	4.5	6.6	4.1	6.7	4.5
	20.0	3.8	3.6	4.5	3.9	5.2	3.8	5.6	4.4	6.0	4.5	6.5	4.0	6.6	4.5
	21.0	3.8	3.6	4.5	3.9	5.2	3.8	5.6	4.4	6.0	4.5	6.4	4.0	6.6	4.5
	23.0	3.8	3.6	4.5	3.9	5.2	3.8	5.6	4.4	6.0	4.5	6.4	4.0	6.5	4.4
	25.0	3.8	3.6	4.5	3.9	5.2	3.8	5.6	4.4	6.0	4.5	6.3	3.9	6.4	4.4
	27.0	3.8	3.6	4.5	3.9	5.2	3.8	5.6	4.4	6.0	4.5	6.2	3.9	6.3	4.3
	29.0	3.8	3.6	4.5	3.9	5.2	3.8	5.6	4.4	5.9	4.5	6.1	3.8	6.2	4.3
	31.0	3.8	3.6	4.5	3.9	5.2	3.8	5.6	4.4	5.9	4.4	6.0	3.8	6.1	4.3
	33.0	3.8	3.6	4.5	3.9	5.2	3.8	5.6	4.4	5.8	4.4	5.9	3.8	6.0	4.2
	35.0	3.8	3.6	4.5	3.9	5.2	3.8	5.6	4.4	5.7	4.3	5.8	3.7	5.9	4.2
	37.0	3.8	3.6	4.5	3.9	5.2	3.8	5.5	4.4	5.6	4.3	5.7	3.7	5.9	4.1
	39.0	3.8	3.6	4.5	3.9	5.2	3.8	5.4	4.3	5.5	4.2	5.6	3.6	5.8	4.1

3TW31182-1

5 Capacity tables

5 - 1 Cooling capacity tables

FXSQ-P7		TC: Total Capacity: kW ; SHC: Sensible heat capacity: kW													
Unit size	Outdoor air temp. (°CDB)	Indoor air temperature													
		14.0WB		16.0WB		18.0WB		19.0WB		20.0WB		22.0WB		24.0WB	
		20.0DB		23.0DB		26.0DB		27.0DB		28.0DB		30.0DB		32.0DB	
		TC	SHC	TC	SHC	TC	SHC	TC	SHC	TC	SHC	TC	SHC	TC	SHC
63	10.0	4.8	4.2	5.7	4.9	6.6	5.4	7.1	5.5	7.6	5.6	8.5	5.8	9.0	6.4
	12.0	4.8	4.2	5.7	4.9	6.6	5.4	7.1	5.5	7.6	5.6	8.5	5.8	8.9	6.3
	14.0	4.8	4.2	5.7	4.9	6.6	5.4	7.1	5.5	7.6	5.6	8.5	5.8	8.7	6.3
	16.0	4.8	4.2	5.7	4.9	6.6	5.4	7.1	5.5	7.6	5.6	8.5	5.8	8.6	6.3
	18.0	4.8	4.2	5.7	4.9	6.6	5.4	7.1	5.5	7.6	5.6	8.3	5.8	8.5	6.2
	20.0	4.8	4.2	5.7	4.9	6.6	5.4	7.1	5.5	7.6	5.6	8.2	5.7	8.4	6.2
	21.0	4.8	4.2	5.7	4.9	6.6	5.4	7.1	5.5	7.6	5.6	8.2	5.7	8.3	6.2
	23.0	4.8	4.2	5.7	4.9	6.6	5.4	7.1	5.5	7.6	5.6	8.1	5.6	8.2	6.1
	25.0	4.8	4.2	5.7	4.9	6.6	5.4	7.1	5.5	7.6	5.6	7.9	5.6	8.1	6.1
	27.0	4.8	4.2	5.7	4.9	6.6	5.4	7.1	5.5	7.6	5.6	7.8	5.5	8.0	6.1
	29.0	4.8	4.2	5.7	4.9	6.6	5.4	7.1	5.5	7.5	5.6	7.7	5.4	7.9	6.0
	31.0	4.8	4.2	5.7	4.9	6.6	5.4	7.1	5.5	7.4	5.5	7.6	5.4	7.8	6.0
	33.0	4.8	4.2	5.7	4.9	6.6	5.4	7.1	5.5	7.3	5.5	7.5	5.3	7.6	5.9
35.0	4.8	4.2	5.7	4.9	6.6	5.4	7.1	5.5	7.2	5.4	7.4	5.3	7.5	5.9	
37.0	4.8	4.2	5.7	4.9	6.6	5.4	7.0	5.5	7.1	5.4	7.2	5.2	7.4	5.9	
39.0	4.8	4.2	5.7	4.9	6.6	5.4	6.9	5.4	7.0	5.3	7.1	5.1	7.3	5.8	
80	10.0	6.1	5.3	7.2	6.1	8.4	6.9	9.0	7.0	9.6	7.1	10.8	7.4	11.4	7.4
	12.0	6.1	5.3	7.2	6.1	8.4	6.9	9.0	7.0	9.6	7.1	10.8	7.4	11.2	7.4
	14.0	6.1	5.3	7.2	6.1	8.4	6.9	9.0	7.0	9.6	7.1	10.8	7.4	11.1	7.3
	16.0	6.1	5.3	7.2	6.1	8.4	6.9	9.0	7.0	9.6	7.1	10.7	7.4	10.9	7.2
	18.0	6.1	5.3	7.2	6.1	8.4	6.9	9.0	7.0	9.6	7.1	10.6	7.3	10.8	7.2
	20.0	6.1	5.3	7.2	6.1	8.4	6.9	9.0	7.0	9.6	7.1	10.4	7.2	10.6	7.1
	21.0	6.1	5.3	7.2	6.1	8.4	6.9	9.0	7.0	9.6	7.1	10.4	7.2	10.6	7.1
	23.0	6.1	5.3	7.2	6.1	8.4	6.9	9.0	7.0	9.6	7.1	10.2	7.1	10.4	7.0
	25.0	6.1	5.3	7.2	6.1	8.4	6.9	9.0	7.0	9.6	7.1	10.1	7.0	10.3	6.9
	27.0	6.1	5.3	7.2	6.1	8.4	6.9	9.0	7.0	9.6	7.1	9.9	7.0	10.1	6.9
	29.0	6.1	5.3	7.2	6.1	8.4	6.9	9.0	7.0	9.5	7.1	9.8	6.9	10.0	6.8
	31.0	6.1	5.3	7.2	6.1	8.4	6.9	9.0	7.0	9.4	7.0	9.6	6.8	9.8	6.7
	33.0	6.1	5.3	7.2	6.1	8.4	6.9	9.0	7.0	9.3	7.0	9.5	6.7	9.7	6.7
35.0	6.1	5.3	7.2	6.1	8.4	6.9	9.0	7.0	9.1	6.9	9.3	6.6	9.5	6.6	
37.0	6.1	5.3	7.2	6.1	8.4	6.9	8.9	6.9	9.0	6.8	9.2	6.6	9.4	6.5	
39.0	6.1	5.3	7.2	6.1	8.4	6.9	8.7	6.8	8.8	6.7	9.0	6.5	9.3	6.5	
100	10.0	7.6	6.4	9.0	7.3	10.5	8.3	11.2	8.5	11.9	8.7	13.4	9.0	14.2	8.9
	12.0	7.6	6.4	9.0	7.3	10.5	8.3	11.2	8.5	11.9	8.7	13.4	9.0	14.0	8.9
	14.0	7.6	6.4	9.0	7.3	10.5	8.3	11.2	8.5	11.9	8.7	13.4	9.0	13.8	8.8
	16.0	7.6	6.4	9.0	7.3	10.5	8.3	11.2	8.5	11.9	8.7	13.3	9.0	13.6	8.7
	18.0	7.6	6.4	9.0	7.3	10.5	8.3	11.2	8.5	11.9	8.7	13.2	8.9	13.4	8.6
	20.0	7.6	6.4	9.0	7.3	10.5	8.3	11.2	8.5	11.9	8.7	13.0	8.8	13.2	8.5
	21.0	7.6	6.4	9.0	7.3	10.5	8.3	11.2	8.5	11.9	8.7	12.9	8.8	13.2	8.5
	23.0	7.6	6.4	9.0	7.3	10.5	8.3	11.2	8.5	11.9	8.7	12.7	8.7	13.0	8.4
	25.0	7.6	6.4	9.0	7.3	10.5	8.3	11.2	8.5	11.9	8.7	12.5	8.6	12.8	8.3
	27.0	7.6	6.4	9.0	7.3	10.5	8.3	11.2	8.5	11.9	8.7	12.3	8.5	12.6	8.2
	29.0	7.6	6.4	9.0	7.3	10.5	8.3	11.2	8.5	11.9	8.6	12.2	8.4	12.4	8.1
	31.0	7.6	6.4	9.0	7.3	10.5	8.3	11.2	8.5	11.7	8.6	12.0	8.3	12.2	8.0
	33.0	7.6	6.4	9.0	7.3	10.5	8.3	11.2	8.5	11.5	8.5	11.8	8.2	12.1	7.9
35.0	7.6	6.4	9.0	7.3	10.5	8.3	11.2	8.5	11.3	8.4	11.6	8.1	11.9	7.8	
37.0	7.6	6.4	9.0	7.3	10.5	8.3	11.0	8.4	11.2	8.3	11.4	8.0	11.7	7.7	
39.0	7.6	6.4	9.0	7.3	10.5	8.3	10.8	8.3	11.0	8.2	11.2	7.9	11.5	7.6	
125	10.0	9.5	7.8	11.3	8.9	13.1	9.6	14.0	9.9	14.9	10.3	16.8	10.7	18.4	11.0
	12.0	9.5	7.8	11.3	8.9	13.1	9.6	14.0	9.9	14.9	10.3	16.8	10.7	18.2	10.9
	14.0	9.5	7.8	11.3	8.9	13.1	9.6	14.0	9.9	14.9	10.3	16.8	10.7	18.0	10.7
	16.0	9.5	7.8	11.3	8.9	13.1	9.6	14.0	9.9	14.9	10.3	16.8	10.7	17.7	10.6
	18.0	9.5	7.8	11.3	8.9	13.1	9.6	14.0	9.9	14.9	10.3	16.8	10.7	17.5	10.4
	20.0	9.5	7.8	11.3	8.9	13.1	9.6	14.0	9.9	14.9	10.3	16.8	10.7	17.2	10.3
	21.0	9.5	7.8	11.3	8.9	13.1	9.6	14.0	9.9	14.9	10.3	16.8	10.7	17.1	10.2
	23.0	9.5	7.8	11.3	8.9	13.1	9.6	14.0	9.9	14.9	10.3	16.5	10.6	16.9	10.1
	25.0	9.5	7.8	11.3	8.9	13.1	9.6	14.0	9.9	14.9	10.3	16.3	10.4	16.6	10.0
	27.0	9.5	7.8	11.3	8.9	13.1	9.6	14.0	9.9	14.9	10.3	16.1	10.3	16.4	9.9
	29.0	9.5	7.8	11.3	8.9	13.1	9.6	14.0	9.9	14.9	10.3	15.8	10.1	16.2	9.8
	31.0	9.5	7.8	11.3	8.9	13.1	9.6	14.0	9.9	14.9	10.3	15.6	10.0	15.9	9.6
	33.0	9.5	7.8	11.3	8.9	13.1	9.6	14.0	9.9	14.9	10.3	15.3	9.9	15.7	9.5
35.0	9.5	7.8	11.3	8.9	13.1	9.6	14.0	9.9	14.8	10.2	15.1	9.8	15.4	9.4	
37.0	9.5	7.8	11.3	8.9	13.1	9.6	14.0	9.9	14.5	10.1	14.9	9.7	15.2	9.3	
39.0	9.5	7.8	11.3	8.9	13.1	9.6	14.0	10.0	14.3	9.9	14.6	9.6	15.0	9.2	

3TW31182-1

5 Capacity tables

5 - 2 Heating capacity tables

FXSQ-P7								
Unit Size	Outdoor air temp.		Indoor air temperature: °CDB					
			16.0	18.0	20.0	21.0	22.0	24.0
	°CDB	°CWB	kW	kW	kW	kW	kW	kW
20	-19.8	-20.0	1.5	1.5	1.5	1.5	1.5	1.5
	-18.8	-19.0	1.5	1.5	1.5	1.5	1.5	1.5
	-16.7	-17.0	1.6	1.6	1.6	1.6	1.6	1.6
	-14.7	-15.0	1.7	1.7	1.7	1.7	1.7	1.7
	-12.6	-13.0	1.8	1.8	1.8	1.8	1.8	1.8
	-10.5	-11.0	1.9	1.9	1.9	1.9	1.9	1.9
	-9.5	-10.0	1.9	1.9	1.9	1.9	1.9	1.9
	-8.5	-9.1	2.0	2.0	2.0	2.0	2.0	2.0
	-7.0	-7.6	2.0	2.0	2.0	2.0	2.0	2.0
	-5.0	-5.6	2.1	2.1	2.1	2.1	2.1	2.1
	-3.0	-3.7	2.2	2.2	2.2	2.2	2.2	2.2
	0.0	-0.7	2.3	2.3	2.3	2.3	2.3	2.3
	3.0	2.2	2.5	2.5	2.4	2.4	2.3	2.2
	5.0	4.1	2.5	2.5	2.5	2.4	2.3	2.2
	7.0	6.0	2.6	2.6	2.5	2.4	2.3	2.2
	9.0	7.9	2.7	2.7	2.5	2.4	2.3	2.2
11.0	9.8	2.8	2.7	2.5	2.4	2.3	2.2	
13.0	11.8	2.8	2.7	2.5	2.4	2.3	2.2	
15.0	13.7	2.8	2.7	2.5	2.4	2.3	2.2	
25	-19.8	-20.0	1.9	1.9	1.9	1.9	1.9	1.9
	-18.8	-19.0	1.9	1.9	1.9	1.9	1.9	1.9
	-16.7	-17.0	2.1	2.1	2.0	2.0	2.0	2.0
	-14.7	-15.0	2.2	2.2	2.2	2.2	2.2	2.2
	-12.6	-13.0	2.3	2.3	2.3	2.3	2.3	2.3
	-10.5	-11.0	2.4	2.4	2.4	2.4	2.4	2.4
	-9.5	-10.0	2.5	2.5	2.4	2.4	2.4	2.4
	-8.5	-9.1	2.5	2.5	2.5	2.5	2.5	2.5
	-7.0	-7.6	2.6	2.6	2.6	2.6	2.6	2.6
	-5.0	-5.6	2.7	2.7	2.7	2.7	2.7	2.7
	-3.0	-3.7	2.8	2.8	2.8	2.8	2.8	2.8
	0.0	-0.7	3.0	3.0	3.0	3.0	3.0	2.8
	3.0	2.2	3.1	3.1	3.1	3.1	3.0	2.8
	5.0	4.1	3.3	3.2	3.2	3.1	3.0	2.8
	7.0	6.0	3.4	3.4	3.2	3.1	3.0	2.8
	9.0	7.9	3.5	3.4	3.2	3.1	3.0	2.8
11.0	9.8	3.6	3.4	3.2	3.1	3.0	2.8	
13.0	11.8	3.6	3.4	3.2	3.1	3.0	2.8	
15.0	13.7	3.6	3.4	3.2	3.1	3.0	2.8	
32	-19.8	-20.0	2.4	2.4	2.3	2.3	2.3	2.3
	-18.8	-19.0	2.4	2.4	2.4	2.4	2.4	2.4
	-16.7	-17.0	2.6	2.6	2.6	2.6	2.6	2.5
	-14.7	-15.0	2.7	2.7	2.7	2.7	2.7	2.7
	-12.6	-13.0	2.9	2.9	2.8	2.8	2.8	2.8
	-10.5	-11.0	3.0	3.0	3.0	3.0	3.0	3.0
	-9.5	-10.0	3.1	3.1	3.1	3.1	3.0	3.0
	-8.5	-9.1	3.1	3.1	3.1	3.1	3.1	3.1
	-7.0	-7.6	3.2	3.2	3.2	3.2	3.2	3.2
	-5.0	-5.6	3.4	3.4	3.4	3.4	3.4	3.4
	-3.0	-3.7	3.5	3.5	3.5	3.5	3.5	3.5
	0.0	-0.7	3.7	3.7	3.7	3.7	3.7	3.5
	3.0	2.2	3.9	3.9	3.9	3.9	3.7	3.5
	5.0	4.1	4.1	4.1	4.0	3.9	3.7	3.5
	7.0	6.0	4.2	4.2	4.0	3.9	3.7	3.5
	9.0	7.9	4.3	4.3	4.0	3.9	3.7	3.5
11.0	9.8	4.5	4.3	4.0	3.9	3.7	3.5	
13.0	11.8	4.5	4.3	4.0	3.9	3.7	3.5	
15.0	13.7	4.5	4.3	4.0	3.9	3.7	3.5	
40	-19.8	-20.0	3.0	2.9	2.9	2.9	2.9	2.9
	-18.8	-19.0	3.0	3.0	3.0	3.0	3.0	3.0
	-16.7	-17.0	3.2	3.2	3.2	3.2	3.2	3.2
	-14.7	-15.0	3.4	3.4	3.4	3.4	3.4	3.4
	-12.6	-13.0	3.6	3.6	3.6	3.5	3.5	3.5
	-10.5	-11.0	3.7	3.7	3.7	3.7	3.7	3.7
	-9.5	-10.0	3.8	3.8	3.8	3.8	3.8	3.8
	-8.5	-9.1	3.9	3.9	3.9	3.9	3.9	3.9
	-7.0	-7.6	4.0	4.0	4.0	4.0	4.0	4.0
	-5.0	-5.6	4.2	4.2	4.2	4.2	4.2	4.2
	-3.0	-3.7	4.4	4.4	4.4	4.4	4.4	4.4
	0.0	-0.7	4.7	4.6	4.6	4.6	4.6	4.4
	3.0	2.2	4.9	4.9	4.9	4.8	4.7	4.4
	5.0	4.1	5.1	5.1	5.0	4.8	4.7	4.4
	7.0	6.0	5.3	5.2	5.0	4.8	4.7	4.4
	9.0	7.9	5.4	5.3	5.0	4.8	4.7	4.4
11.0	9.8	5.6	5.3	5.0	4.8	4.7	4.4	
13.0	11.8	5.6	5.3	5.0	4.8	4.7	4.4	
15.0	13.7	5.6	5.3	5.0	4.8	4.7	4.4	
50	-19.8	-20.0	3.7	3.7	3.7	3.7	3.7	3.7
	-18.8	-19.0	3.8	3.8	3.8	3.8	3.8	3.8
	-16.7	-17.0	4.1	4.0	4.0	4.0	4.0	4.0
	-14.7	-15.0	4.3	4.3	4.3	4.3	4.2	4.2
	-12.6	-13.0	4.5	4.5	4.5	4.5	4.5	4.5
	-10.5	-11.0	4.7	4.7	4.7	4.7	4.7	4.7
	-9.5	-10.0	4.8	4.8	4.8	4.8	4.8	4.8
	-8.5	-9.1	4.9	4.9	4.9	4.9	4.9	4.9
	-7.0	-7.6	5.1	5.1	5.1	5.1	5.1	5.1
	-5.0	-5.6	5.3	5.3	5.3	5.3	5.3	5.3
	-3.0	-3.7	5.5	5.5	5.5	5.5	5.5	5.5
	0.0	-0.7	5.9	5.9	5.8	5.8	5.8	5.5
	3.0	2.2	6.2	6.2	6.2	6.1	5.9	5.5
	5.0	4.1	6.4	6.4	6.3	6.1	5.9	5.5
	7.0	6.0	6.6	6.6	6.3	6.1	5.9	5.5
	9.0	7.9	6.8	6.7	6.3	6.1	5.9	5.5
11.0	9.8	7.0	6.7	6.3	6.1	5.9	5.5	
13.0	11.8	7.1	6.7	6.3	6.1	5.9	5.5	
15.0	13.7	7.1	6.7	6.3	6.1	5.9	5.5	

3TW25512-2A

5 Capacity tables

5 - 2 Heating capacity tables

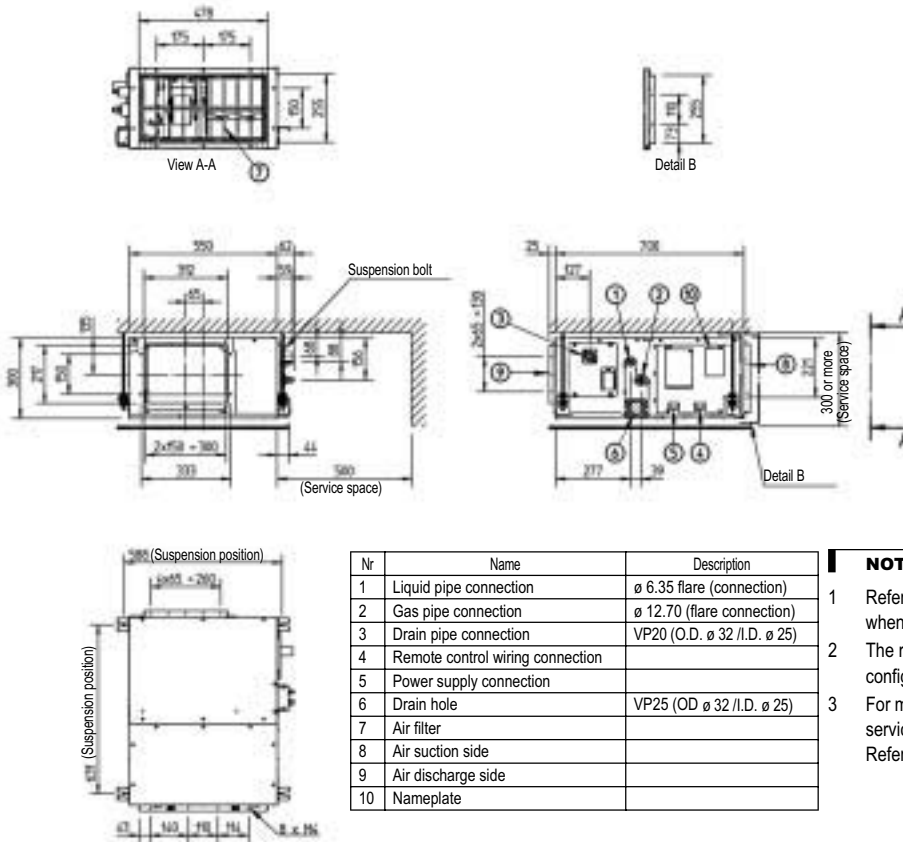
FXSQ-P7								
Unit size	Outdoor air temp.		Indoor air temperature: °CDB					
			16.0	18.0	20.0	21.0	22.0	24.0
			kW	kW	kW	kW	kW	kW
63	°CDB	°CWB						
	-19.8	-20.0	4.7	4.7	4.7	4.7	4.7	4.7
	-18.8	-19.0	4.9	4.9	4.8	4.8	4.8	4.8
	-16.7	-17.0	5.1	5.1	5.1	5.1	5.1	5.1
	-14.7	-15.0	5.4	5.4	5.4	5.4	5.4	5.4
	-12.6	-13.0	5.7	5.7	5.7	5.7	5.7	5.7
	-10.5	-11.0	6.0	6.0	6.0	6.0	6.0	5.9
	-9.5	-10.0	6.1	6.1	6.1	6.1	6.1	6.1
	-8.5	-9.1	6.3	6.3	6.2	6.2	6.2	6.2
	-7.0	-7.6	6.5	6.5	6.4	6.4	6.4	6.4
	-5.0	-5.6	6.8	6.7	6.7	6.7	6.7	6.7
	-3.0	-3.7	7.0	7.0	7.0	7.0	7.0	7.0
	0.0	-0.7	7.5	7.4	7.4	7.4	7.4	7.0
	3.0	2.2	7.9	7.8	7.8	7.7	7.5	7.0
	5.0	4.1	8.1	8.1	8.0	7.7	7.5	7.0
	7.0	6.0	8.4	8.4	8.0	7.7	7.5	7.0
	9.0	7.9	8.7	8.5	8.0	7.7	7.5	7.0
11.0	9.8	8.9	8.5	8.0	7.7	7.5	7.0	
13.0	11.8	9.0	8.5	8.0	7.7	7.5	7.0	
15.0	13.7	9.0	8.5	8.0	7.7	7.5	7.0	
80	-19.8	-20.0	5.9	5.9	5.9	5.9	5.9	5.8
	-18.8	-19.0	6.1	6.1	6.0	6.0	6.0	6.0
	-16.7	-17.0	6.4	6.4	6.4	6.4	6.4	6.4
	-14.7	-15.0	6.8	6.8	6.8	6.7	6.7	6.7
	-12.6	-13.0	7.1	7.1	7.1	7.1	7.1	7.1
	-10.5	-11.0	7.5	7.5	7.5	7.5	7.4	7.4
	-9.5	-10.0	7.7	7.7	7.6	7.6	7.6	7.6
	-8.5	-9.1	7.8	7.8	7.8	7.8	7.8	7.8
	-7.0	-7.6	8.1	8.1	8.1	8.1	8.0	8.0
	-5.0	-5.6	8.5	8.4	8.4	8.4	8.4	8.4
	-3.0	-3.7	8.8	8.8	8.8	8.7	8.7	8.7
	0.0	-0.7	9.3	9.3	9.3	9.3	9.3	8.7
	3.0	2.2	9.8	9.8	9.8	9.7	9.4	8.7
	5.0	4.1	10.2	10.1	10.0	9.7	9.4	8.7
	7.0	6.0	10.5	10.5	10.0	9.7	9.4	8.7
	9.0	7.9	10.8	10.6	10.0	9.7	9.4	8.7
	11.0	9.8	11.2	10.6	10.0	9.7	9.4	8.7
13.0	11.8	11.3	10.6	10.0	9.7	9.4	8.7	
15.0	13.7	11.3	10.6	10.0	9.7	9.4	8.7	
100	-19.8	-20.0	7.4	7.4	7.3	7.3	7.3	7.3
	-18.8	-19.0	7.6	7.6	7.6	7.5	7.5	7.5
	-16.7	-17.0	8.0	8.0	8.0	8.0	8.0	8.0
	-14.7	-15.0	8.5	8.5	8.4	8.4	8.4	8.4
	-12.6	-13.0	8.9	8.9	8.9	8.9	8.9	8.8
	-10.5	-11.0	9.4	9.3	9.3	9.3	9.3	9.3
	-9.5	-10.0	9.6	9.6	9.5	9.5	9.5	9.5
	-8.5	-9.1	9.8	9.8	9.7	9.7	9.7	9.7
	-7.0	-7.6	10.1	10.1	10.1	10.1	10.1	10.0
	-5.0	-5.6	10.6	10.5	10.5	10.5	10.5	10.5
	-3.0	-3.7	11.0	11.0	10.9	10.9	10.9	10.9
	0.0	-0.7	11.6	11.6	11.6	11.6	11.6	10.9
	3.0	2.2	12.3	12.3	12.2	12.1	11.7	10.9
	5.0	4.1	12.7	12.7	12.5	12.1	11.7	10.9
	7.0	6.0	13.1	13.1	12.5	12.1	11.7	10.9
	9.0	7.9	13.5	13.3	12.5	12.1	11.7	10.9
	11.0	9.8	14.0	13.3	12.5	12.1	11.7	10.9
13.0	11.8	14.1	13.3	12.5	12.1	11.7	10.9	
15.0	13.7	14.1	13.3	12.5	12.1	11.7	10.9	
125	-19.8	-20.0	9.4	9.4	9.4	9.4	9.4	9.3
	-18.8	-19.0	9.7	9.7	9.7	9.7	9.6	9.6
	-16.7	-17.0	10.3	10.3	10.2	10.2	10.2	10.2
	-14.7	-15.0	10.9	10.8	10.8	10.8	10.8	10.8
	-12.6	-13.0	11.4	11.4	11.4	11.4	11.3	11.3
	-10.5	-11.0	12.0	12.0	11.9	11.9	11.9	11.9
	-9.5	-10.0	12.3	12.2	12.2	12.2	12.2	12.2
	-8.5	-9.1	12.5	12.5	12.5	12.5	12.4	12.4
	-7.0	-7.6	13.0	12.9	12.9	12.9	12.9	12.8
	-5.0	-5.6	13.5	13.5	13.5	13.4	13.4	13.4
	-3.0	-3.7	14.1	14.0	14.0	14.0	14.0	13.9
	0.0	-0.7	14.9	14.9	14.8	14.8	14.8	13.9
	3.0	2.2	15.7	15.7	15.7	15.5	15.0	13.9
	5.0	4.1	16.3	16.2	16.0	15.5	15.0	13.9
	7.0	6.0	16.8	16.8	16.0	15.5	15.0	13.9
	9.0	7.9	17.3	17.0	16.0	15.5	15.0	13.9
	11.0	9.8	17.9	17.0	16.0	15.5	15.0	13.9
13.0	11.8	18.1	17.0	16.0	15.5	15.0	13.9	
15.0	13.7	18.1	17.0	16.0	15.5	15.0	13.9	

3TW25512-2A

6 Dimensional drawing & centre of gravity

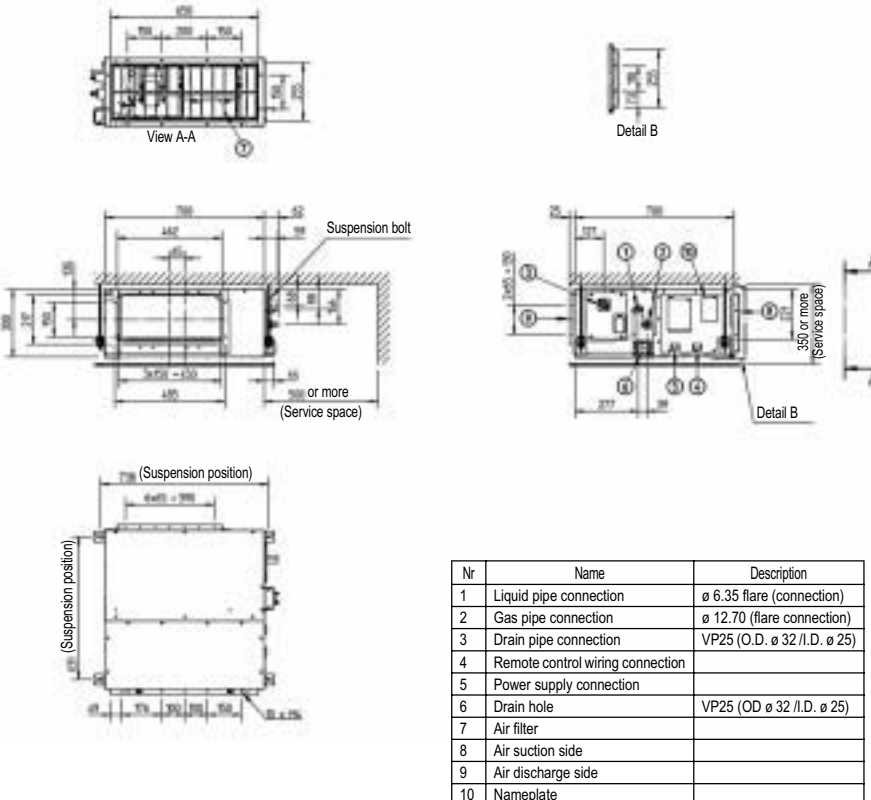
6 - 1 Dimensional drawing

FXSQ20-32P



3TW31184-1

FXSQ40-50P

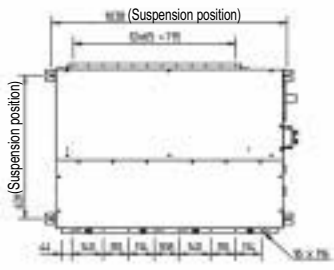
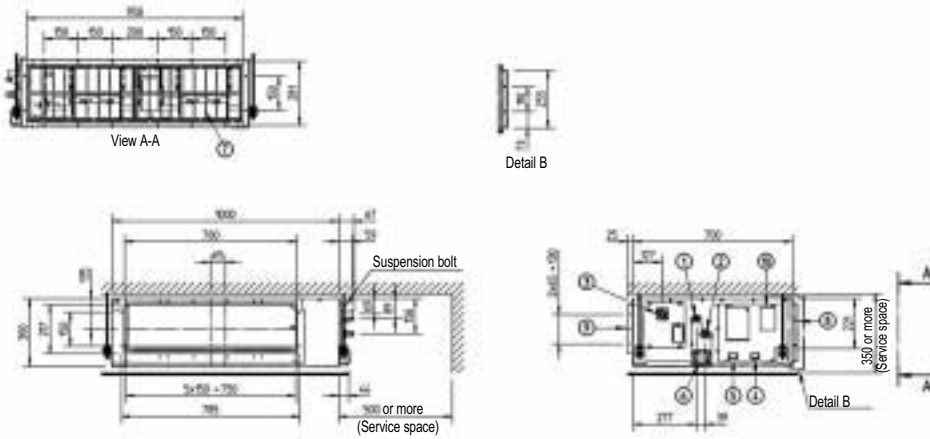


3TW31214-1

6 Dimensional drawing & centre of gravity

6 - 1 Dimensional drawing

FXSQ63-80P

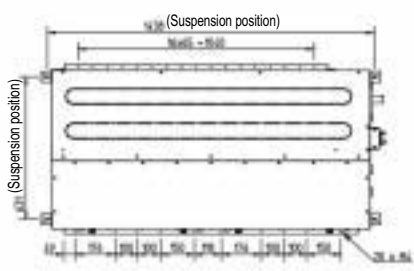
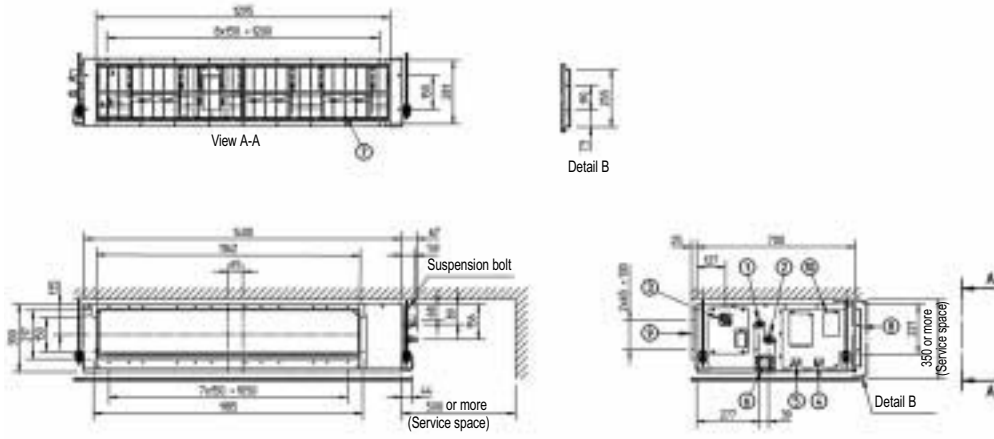


Nr	Name	Description
1	Liquid pipe connection	ø 9.52 flare (connection)
2	Gas pipe connection	ø 15.90 (flare connection)
3	Drain pipe connection	VP25 (O.D. ø 32 /I.D. ø 25)
4	Remote control wiring connection	
5	Power supply connection	
6	Drain hole	VP25 (OD ø 32 /I.D. ø 25)
7	Air filter	
8	Air suction side	
9	Air discharge side	
10	Nameplate	

- NOTE**
- 1 Refer to 'outlook drawing for installing optional accessories' when installing optional accessories.
 - 2 The required ceiling depth varies according to the configuration of the specific system.
 - 3 For maintenance of the air filter, it is necessary to provide a service access panel. Refer to the 'filter installation method' drawing.

3TW31234-1

FXSQ100-125P



Nr	Name	Description
1	Liquid pipe connection	ø 9.52 flare (connection)
2	Gas pipe connection	ø 15.90 (flare connection)
3	Drain pipe connection	VP25 (O.D. ø 32 /I.D. ø 25)
4	Remote control wiring connection	
5	Power supply connection	
6	Drain hole	VP25 (OD ø 32 /I.D. ø 25)
7	Air filter	
8	Air suction side	
9	Air discharge side	
10	Nameplate	

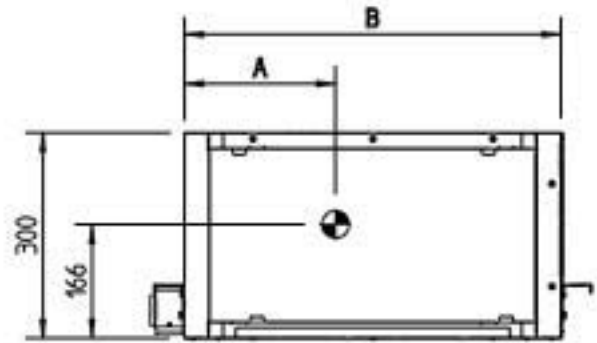
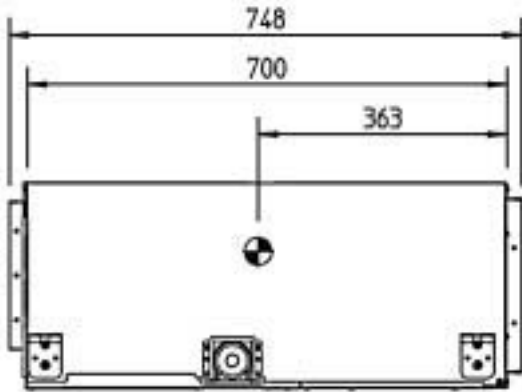
- NOTE**
- 1 Refer to 'outlook drawing for installing optional accessories' when installing optional accessories.
 - 2 The required ceiling depth varies according to the configuration of the specific system.
 - 3 For maintenance of the air filter, it is necessary to provide a service access panel. Refer to the 'filter installation method' drawing.

3TW31254-1

6 Dimensional drawing & centre of gravity

6 - 2 Centre of gravity

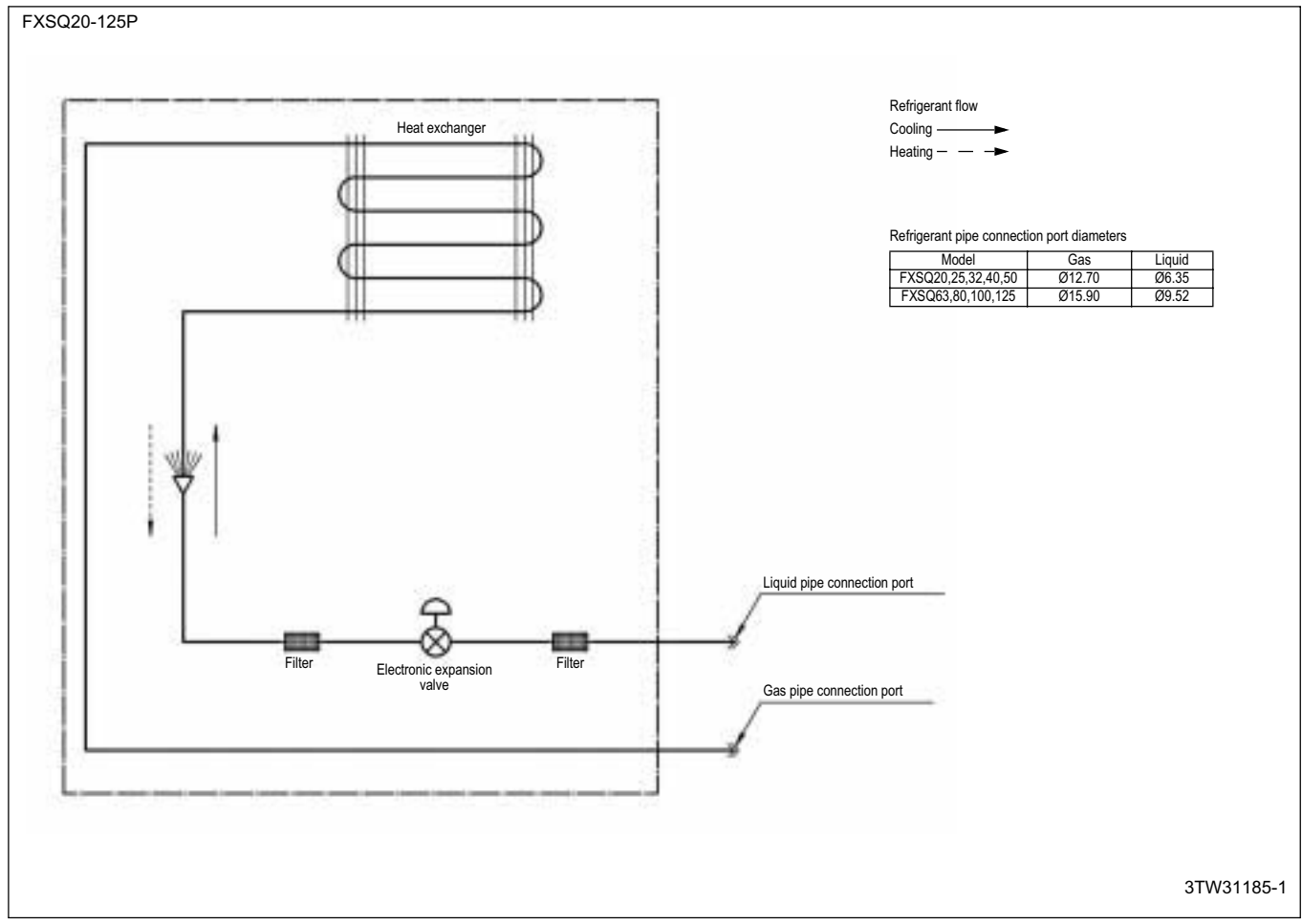
FXSQ20-125P



MODEL	A	B
FXSQ20~32	220	550
FXSQ40,50	283	700
FXSQ63,80	441	1000
FXSQ100,125	619	1400

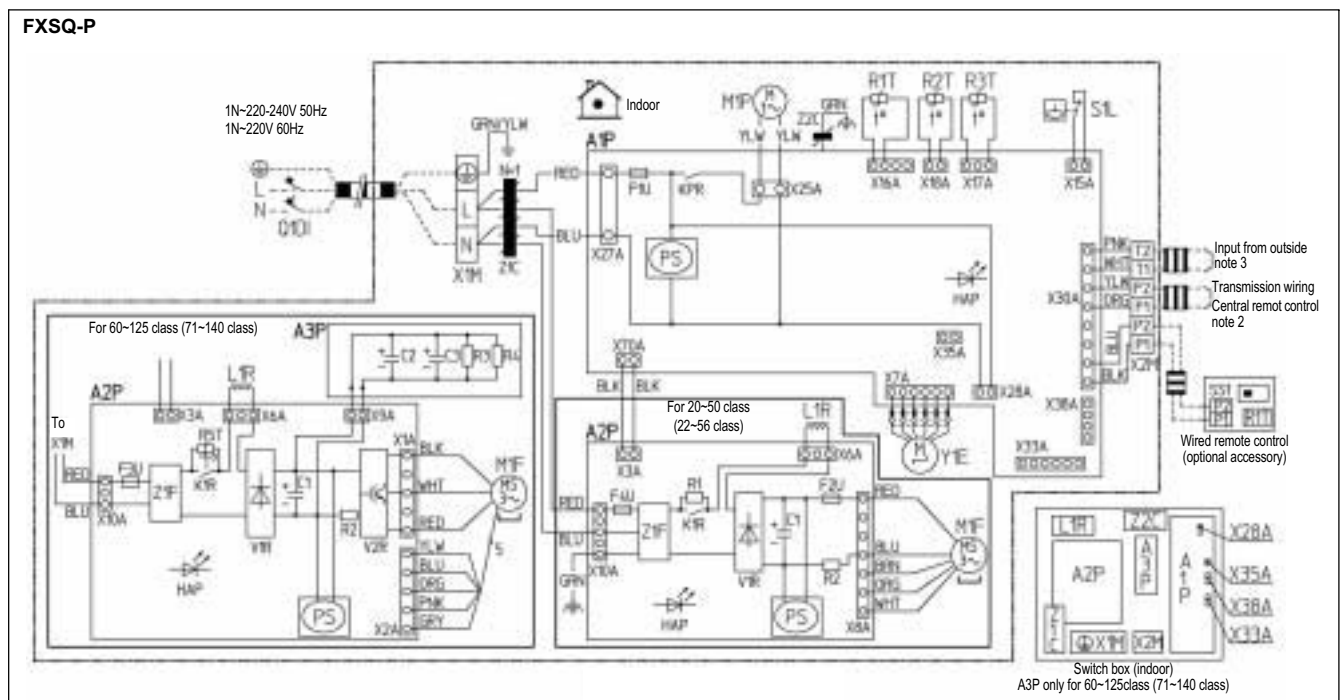
4TW31189-1A

7 Piping diagram



8 Wiring diagram

8 - 1 Wiring diagram



Indoor unit		PS	Switching power supply	Y1E	Electronical expansion valve
A1P	Printed circuit board	Q1DI	Earth leak detector	Z1C, Z2C	Noise filter
A2P	Printed circuit board (fan)	R1	Resistor (current limiting)	Z1F	Noise filter
A3P	Printed circuit board (capacitor)	R2	Current sensing device		
C1, C2, C3	Capacitor	R3, R4	Resistor (electric discharge)		
F1U	Fuse (T, 3.15A, 250V)	R1T	Thermistor (suction air)	Connector optional accessory	
F2U	Fuse (T, 5A, 250V)	R2T	Thermistor (Liquid)	X28A	Connector (power supply for wiring)
F3U	Fuse (T, 6.3A, 250V)	R3T	Thermistor (gas)	X35A	Connector (adapter)
F4U	Fuse (T, 6.3A, 250V)	R5T	Thermistor NTC (current limiting)	X38A	Connector (for wiring)
HAP	Light emitting diode (service monitor green)	S1L	Float switch		
KPR, K1R	Magnetic relay	V1R	Diode bridge		
L1R	Reactor	V2R	Power module	Wired remote control	
M1F	Motor (fan)	X1M	Terminal strip (power supply)	R1T	Thermistor (air)
M1P	Motor (drain pump)	X2M	Terminal strip (control)	SS1	Selector switch (main/sub)

- : Field wiring
- : Connector
- : Wire clamp
- : Protective earth screw

- L : Live
- N : Neutral

- Colors:
- RED: Red
 - BLK: Black
 - WHT: White
 - YLW: Yellow
 - ORG: Orange
 - BRN: Brown
 - GRY: Gray
 - BLU: Blue
 - PNK: Pink
 - GRN: Green

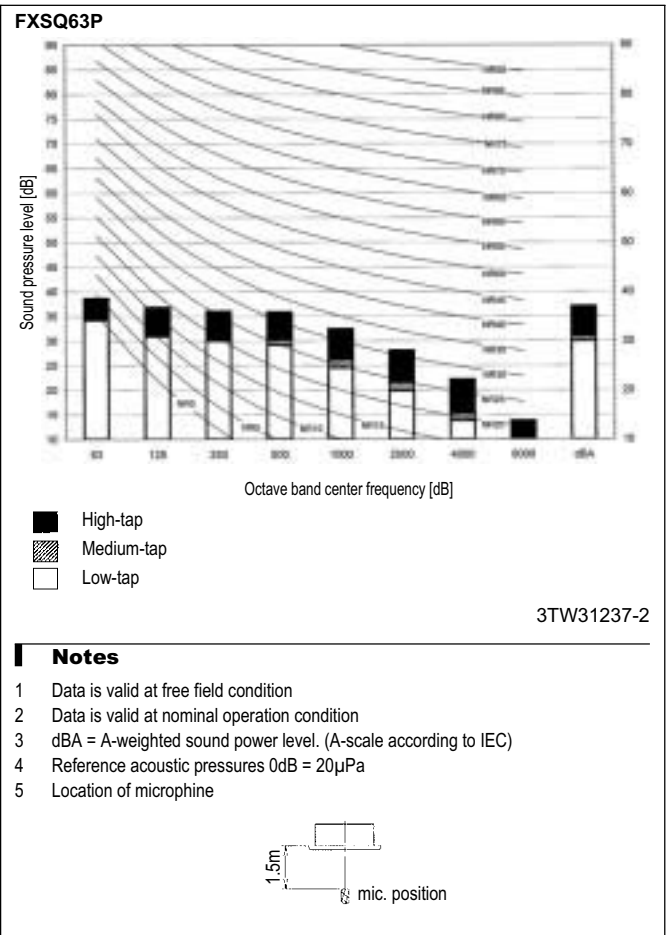
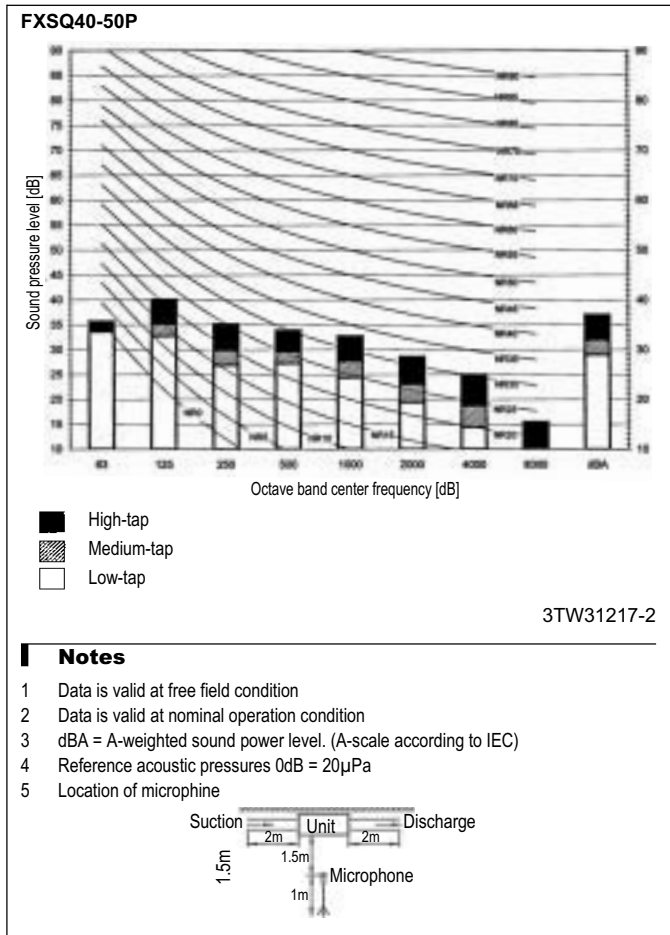
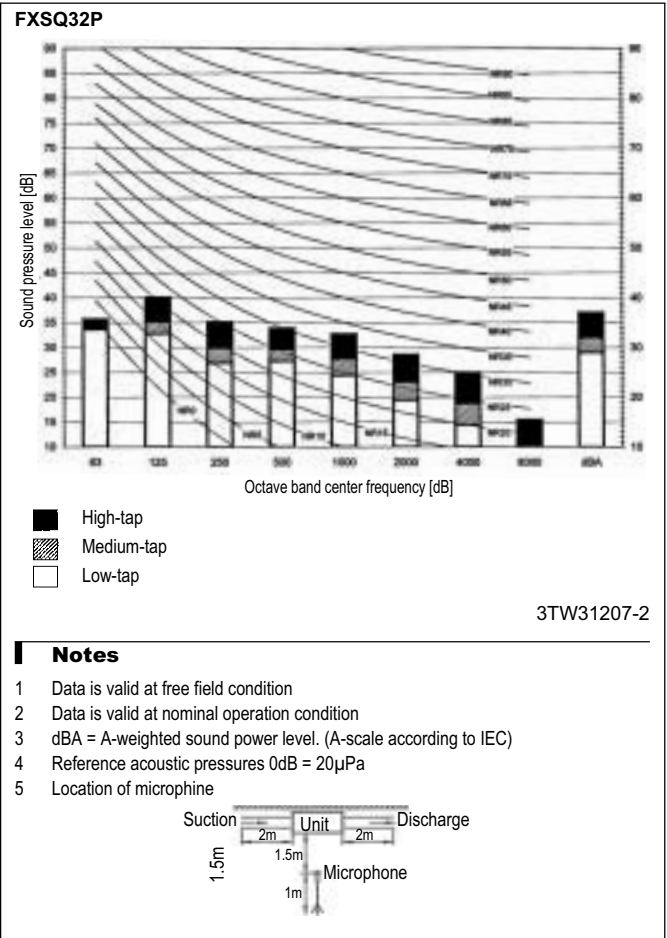
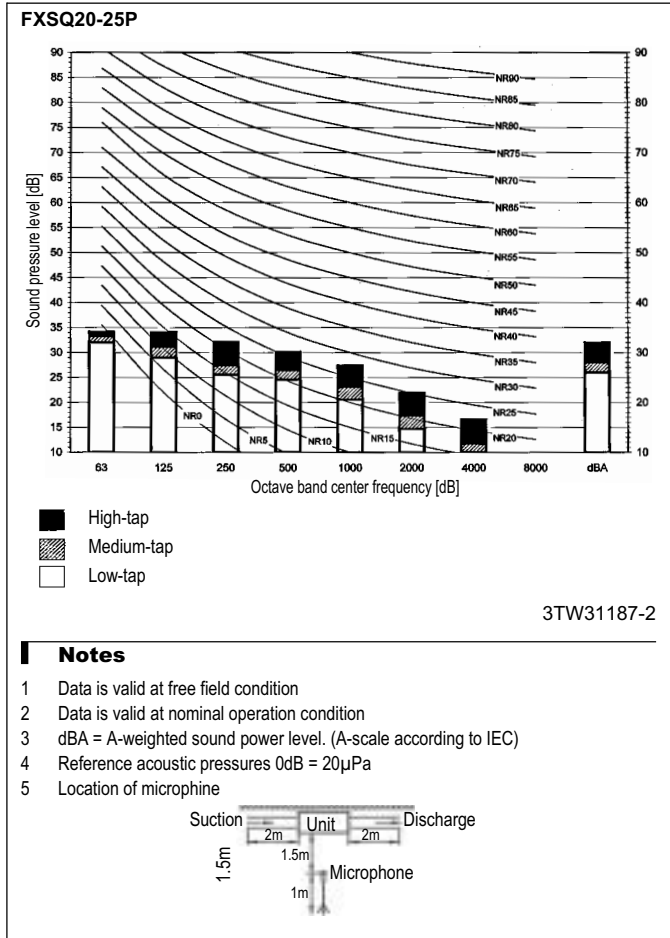
2TW31186-1C

NOTES

- Use copper conductors only.
- When using the central remote control, see manual for connection to the unit.
- When connecting the input wires from outside, forced off or on/off operation can be selected by the remote control. See installation manual for more details.

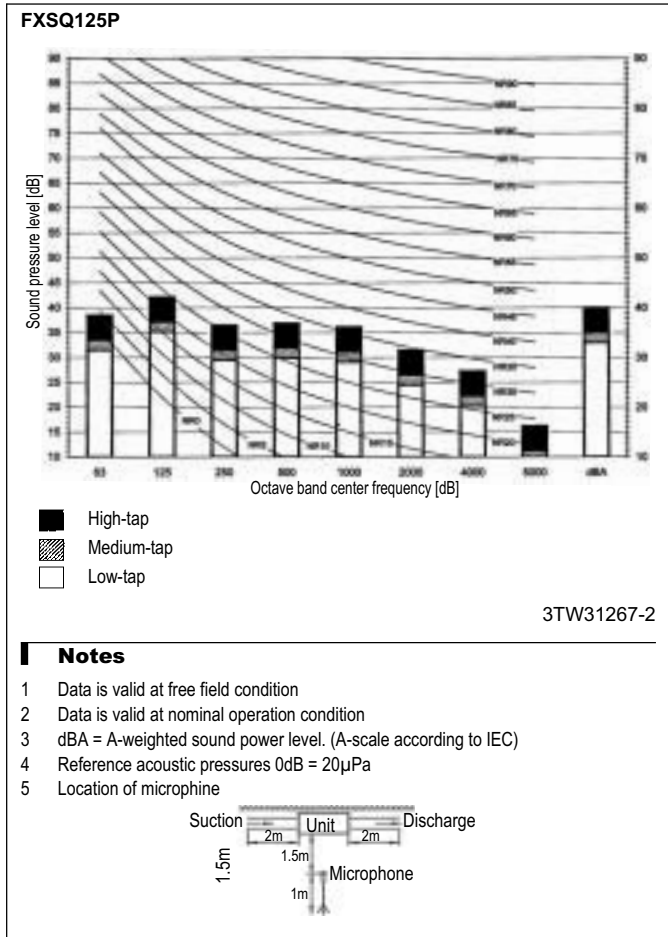
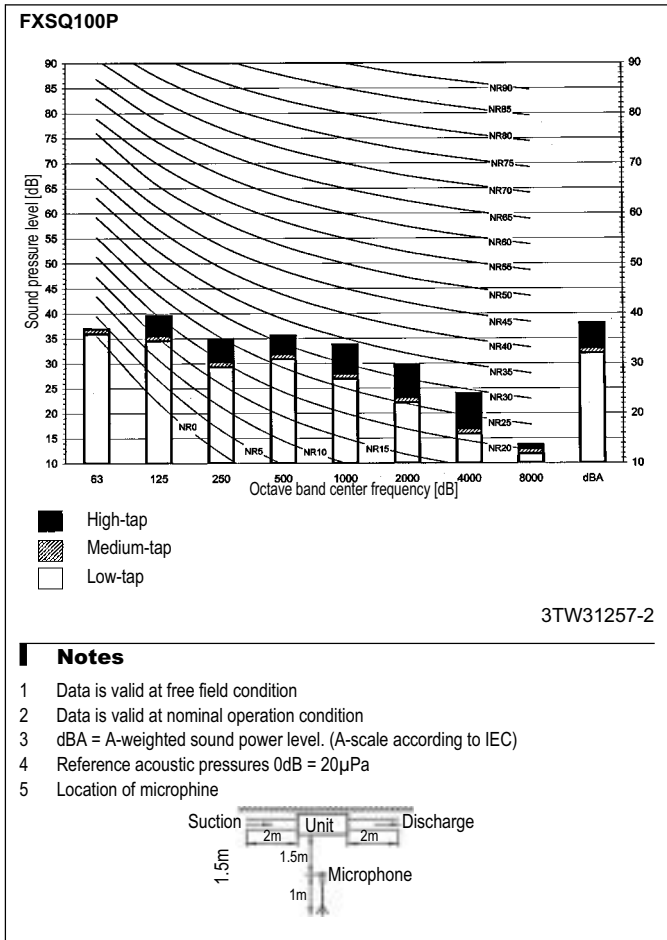
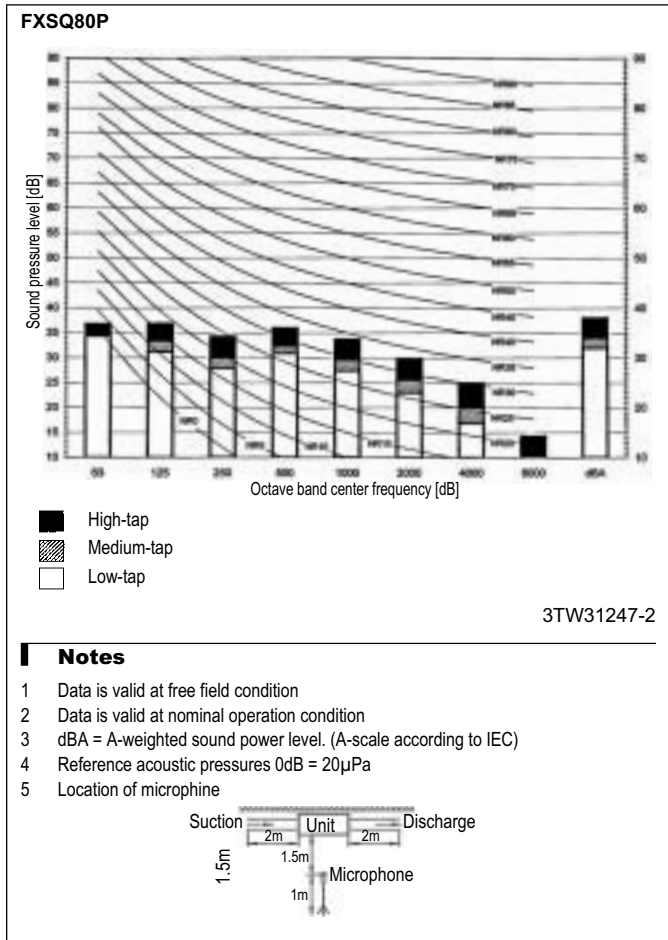
9 Sound data

9 - 1 Sound pressure spectrum



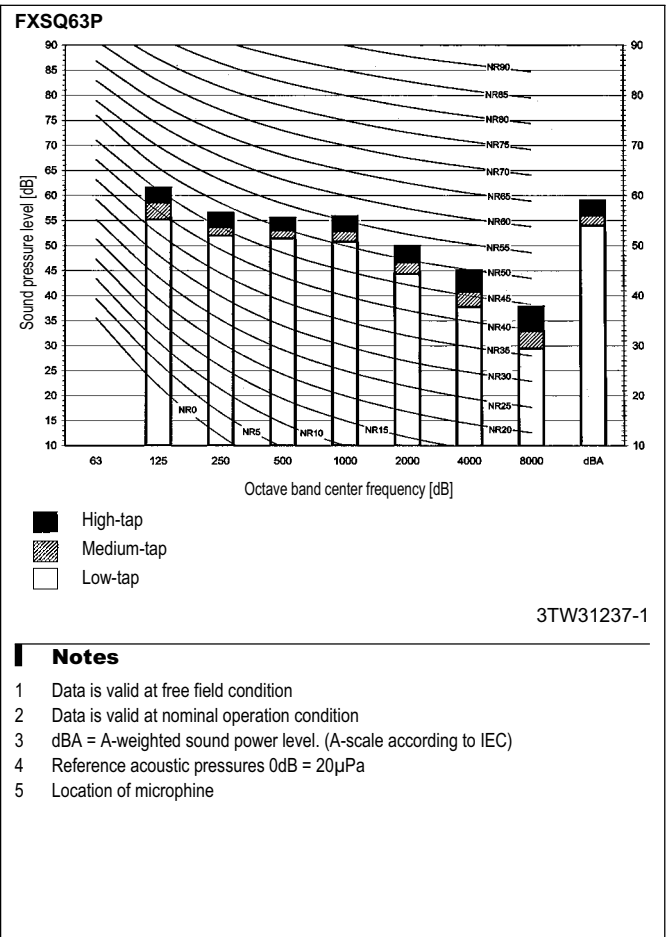
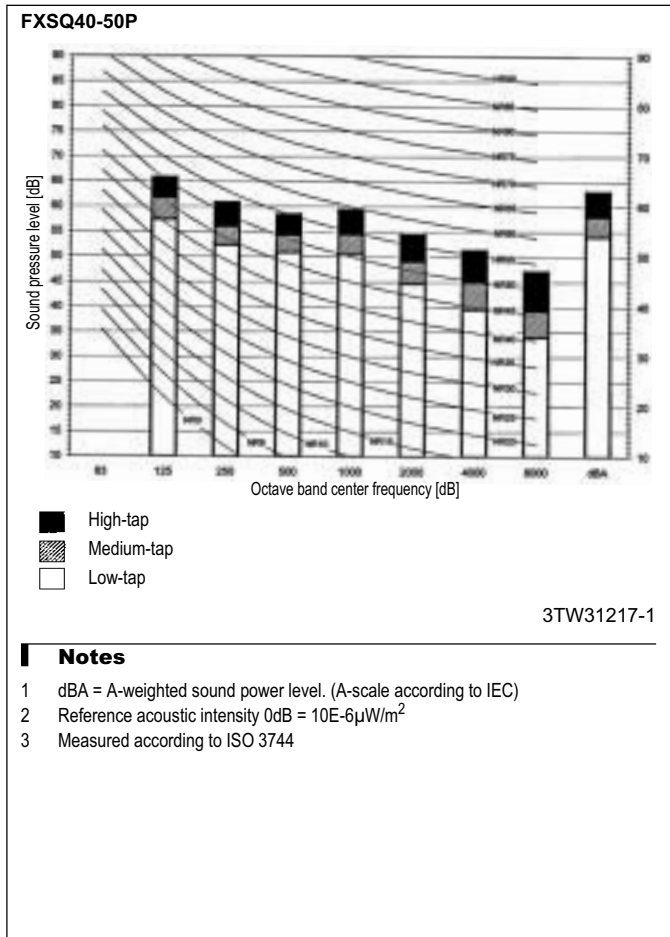
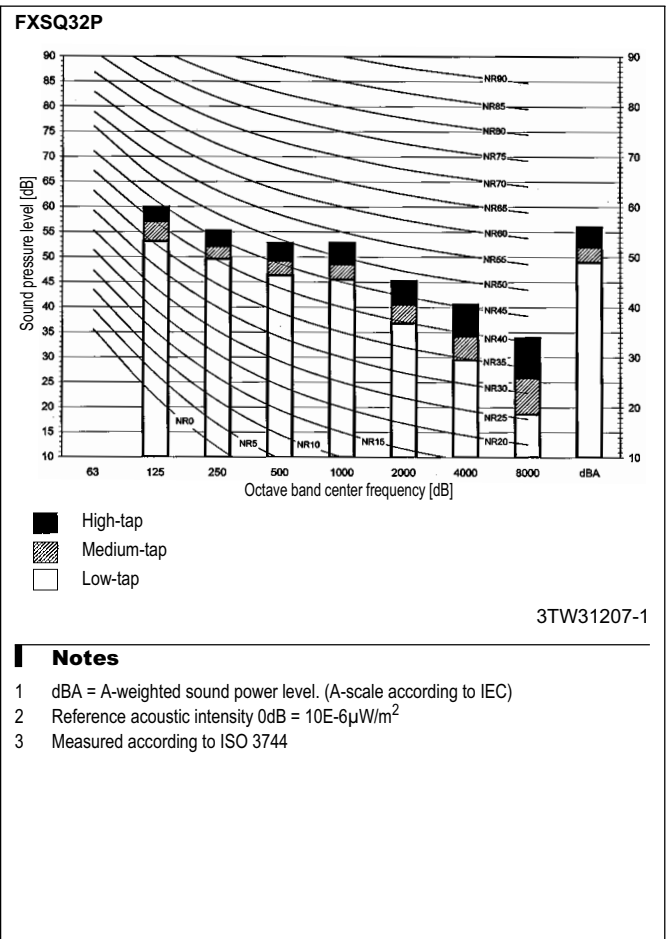
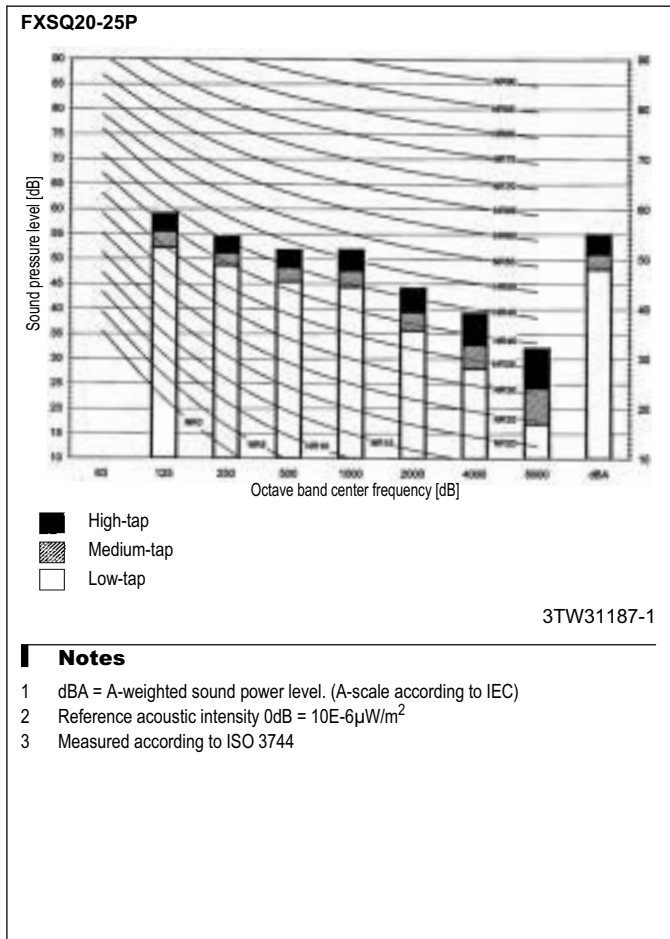
9 Sound data

9 - 1 Sound pressure spectrum



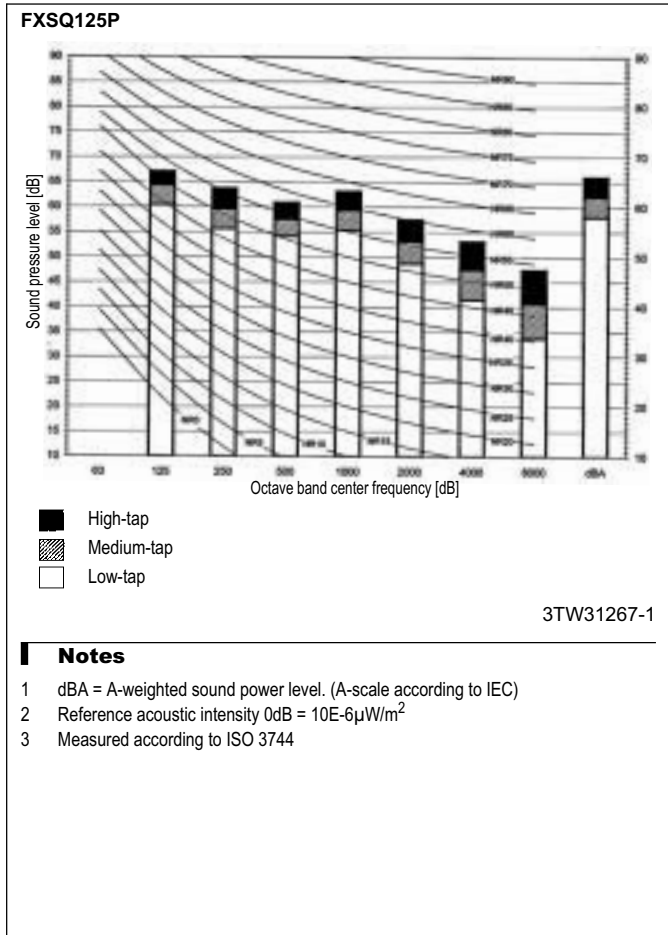
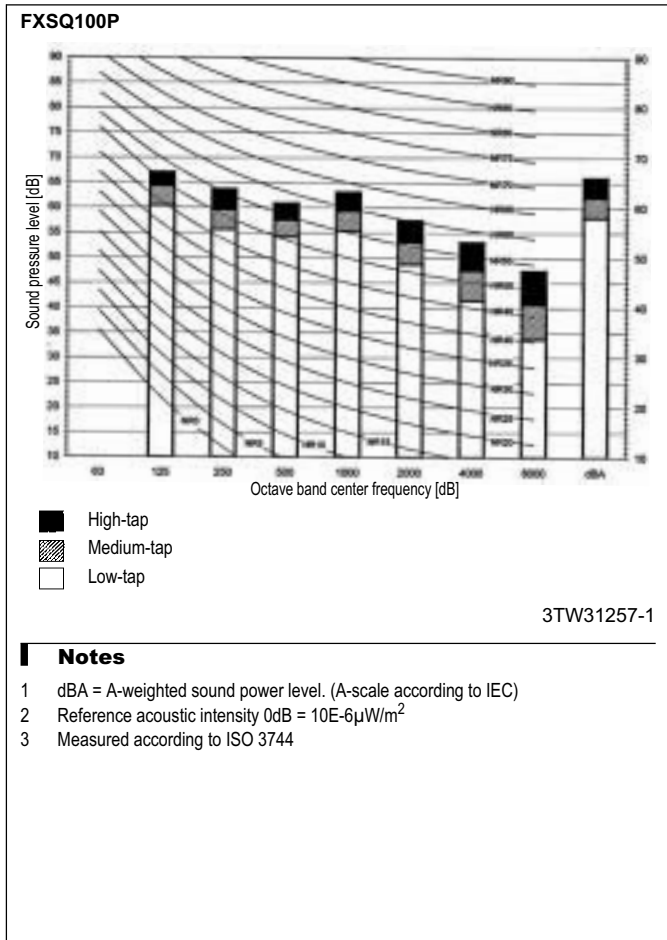
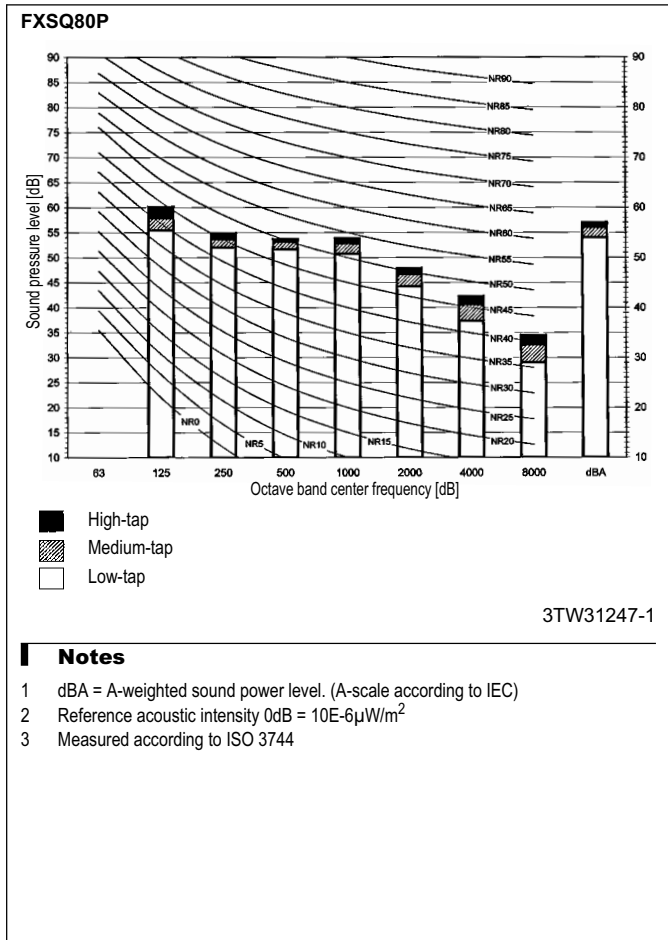
9 Sound data

9 - 2 Sound power spectrum



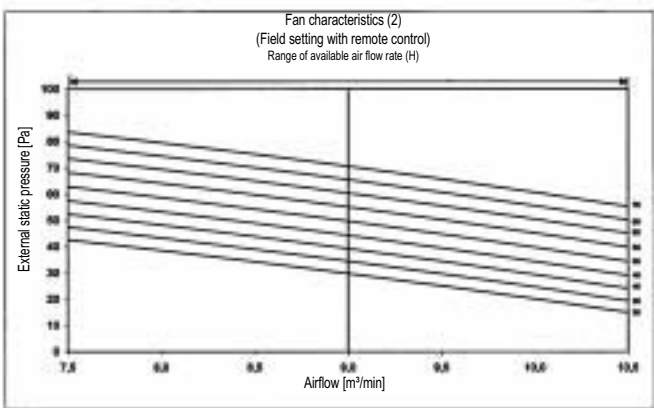
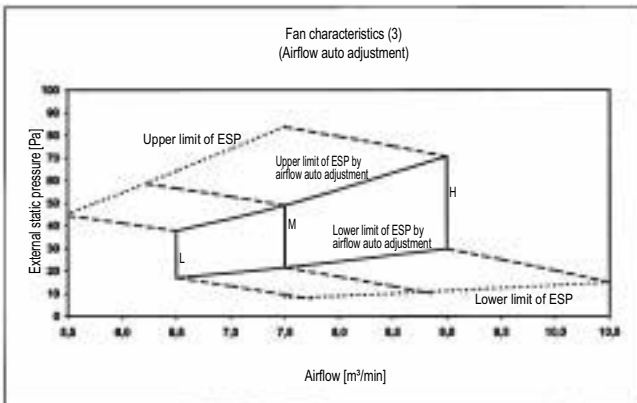
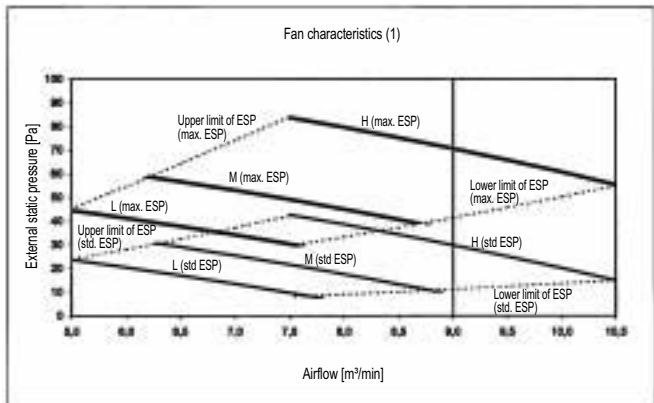
9 Sound data

9 - 2 Sound power spectrum



10 Fan characteristics

FXSQ20-25P

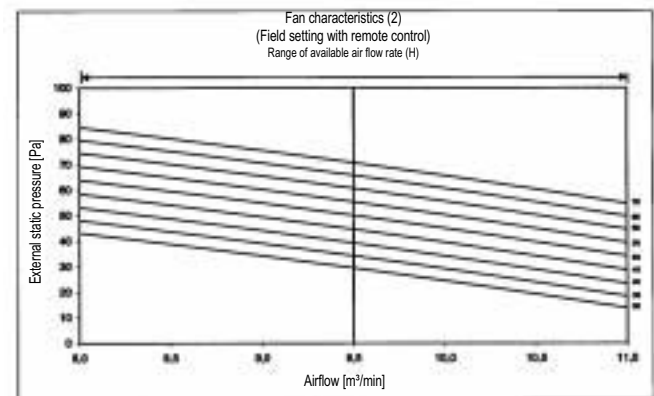
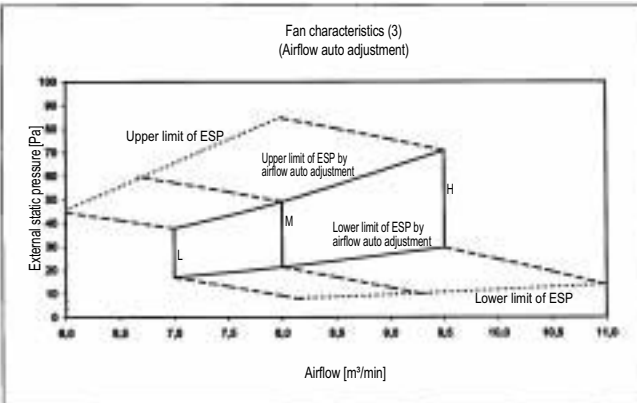
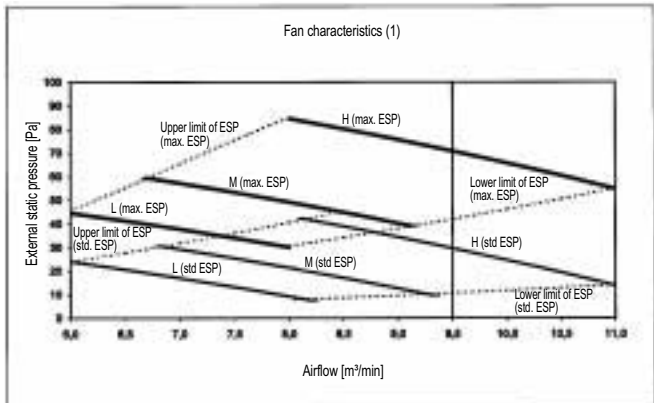


NOTES

- 1 Fan characteristics as shown ar in "fan only" mode.
- 2 ESP: External static pressure

3TW31188-1

FXSQ32P



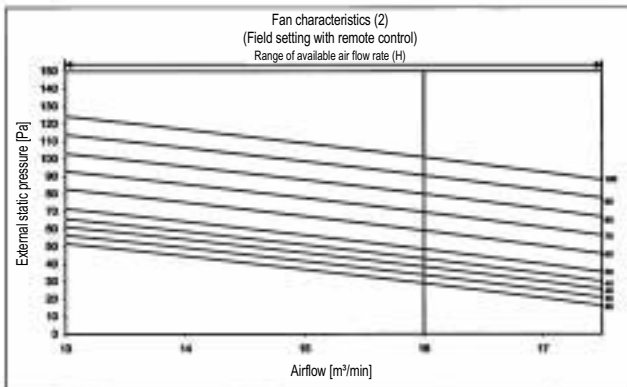
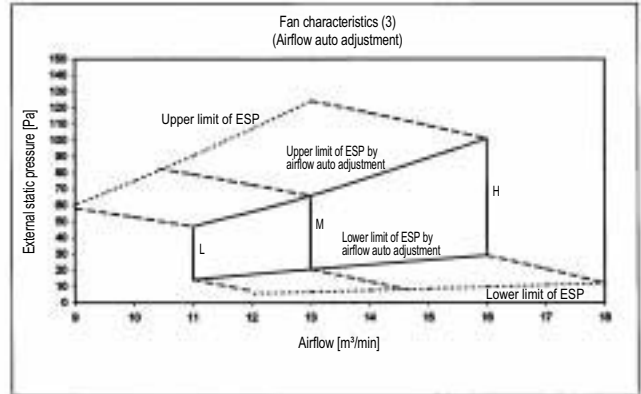
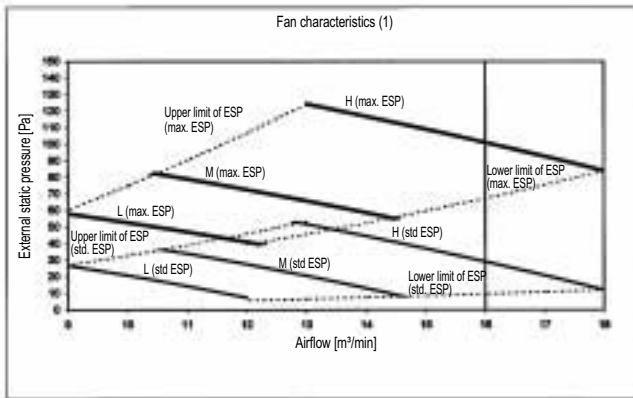
NOTES

- 1 Fan characteristics as shown ar in "fan only" mode.
- 2 ESP: External static pressure

3TW31208-1

10 Fan characteristics

FXSQ40-50

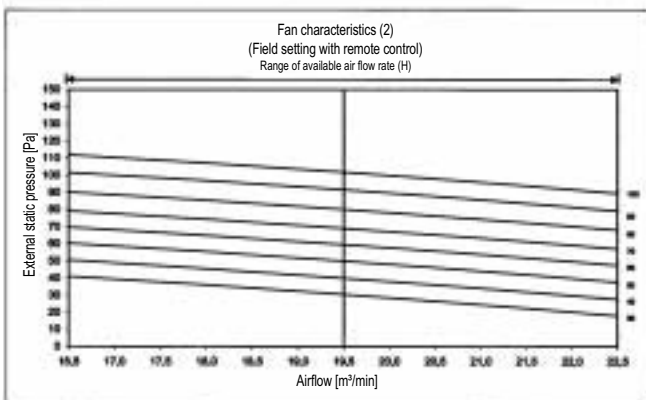
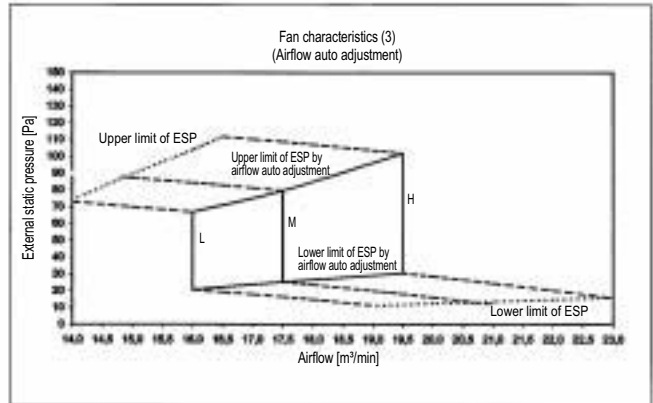
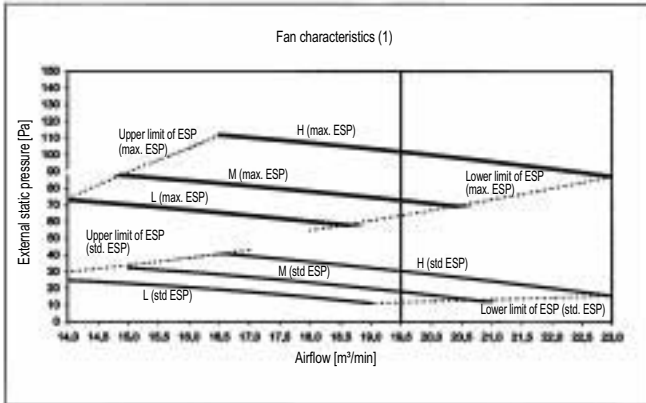


NOTES

- 1 Fan characteristics as shown ar in "fan only" mode.
- 2 ESP: External static pressure

3TW31218-1

FXSQ63P



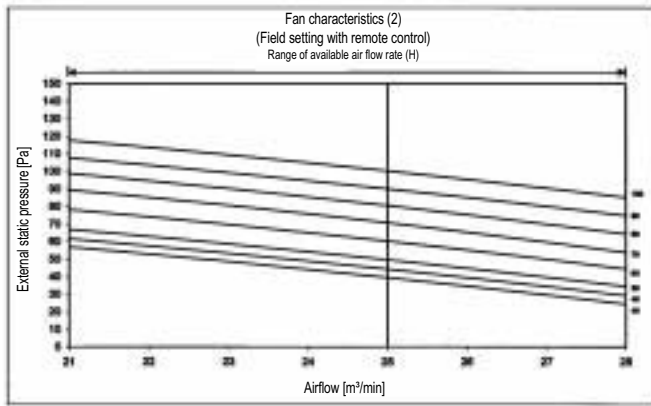
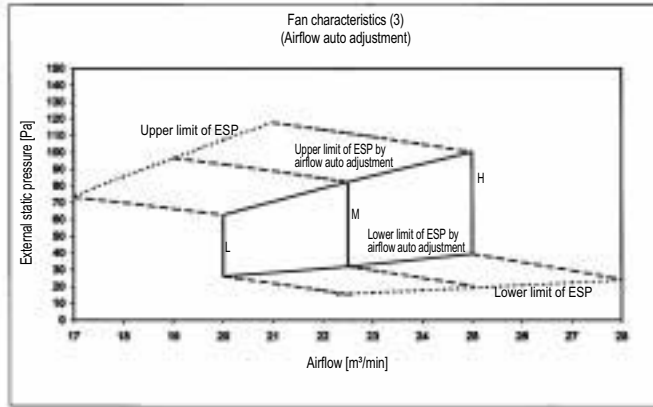
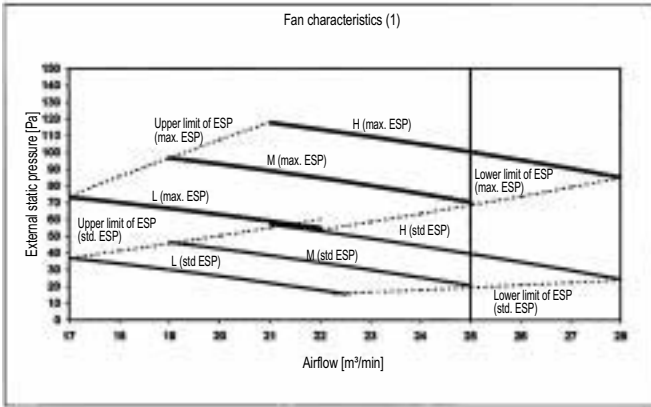
NOTES

- 1 Fan characteristics as shown ar in "fan only" mode.
- 2 ESP: External static pressure

3TW31238-1

10 Fan characteristics

FXSQ80P7

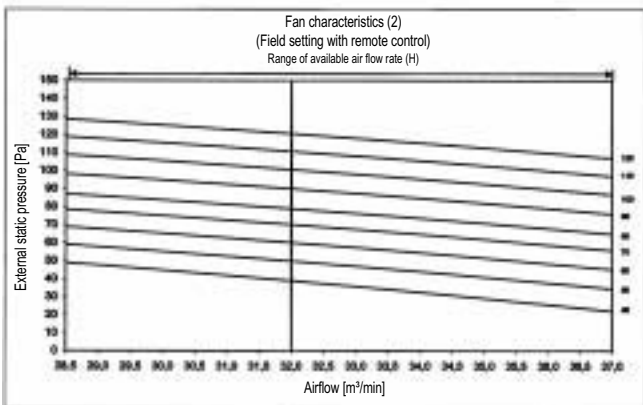
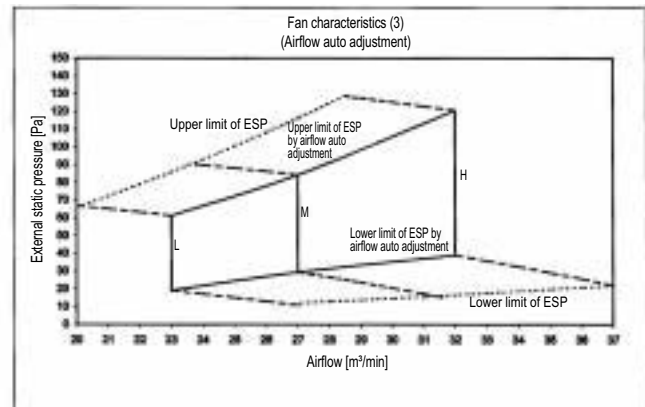
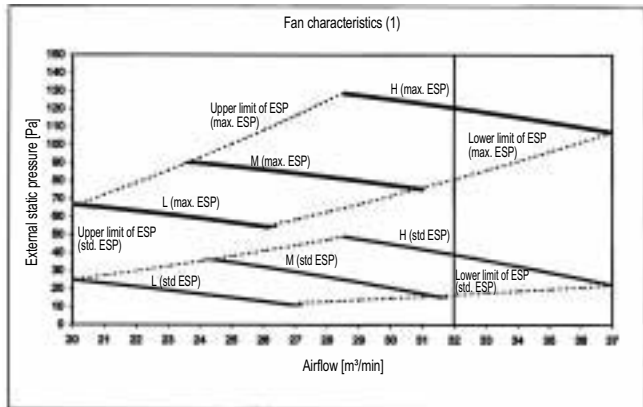


NOTES

- 1 Fan characteristics as shown ar in "fan only" mode.
- 2 ESP: External static pressure

3TW31248-1

FXSQ100P



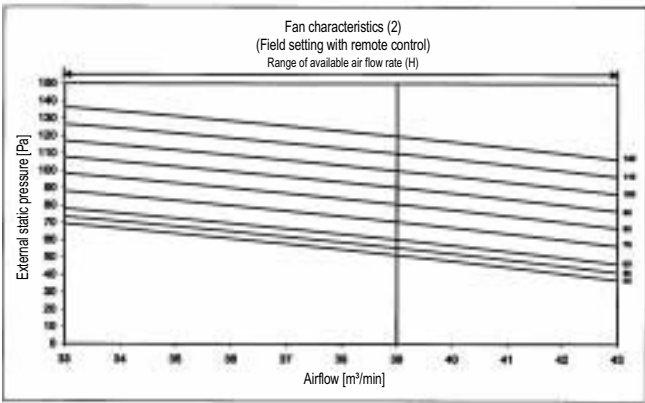
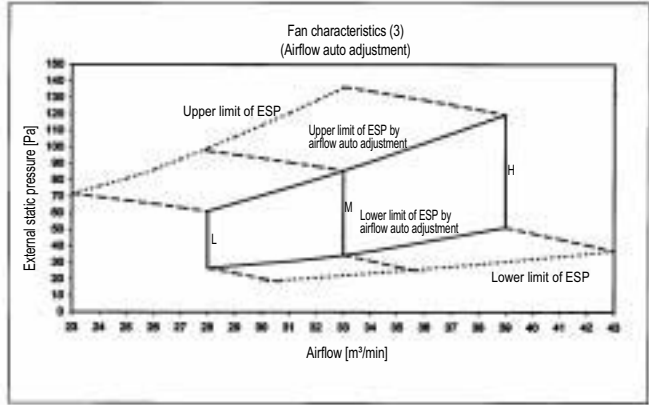
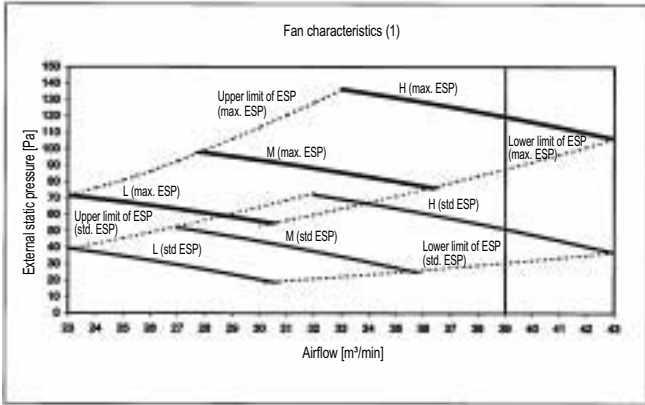
NOTES

- 1 Fan characteristics as shown ar in "fan only" mode.
- 2 ESP: External static pressure

3TW31258-1

10 Fan characteristics

FXSQ125P



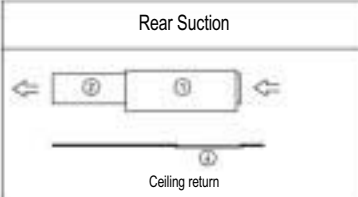
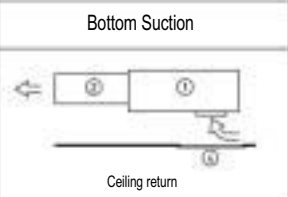
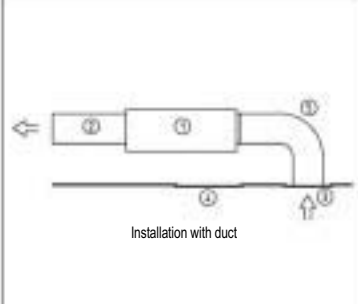
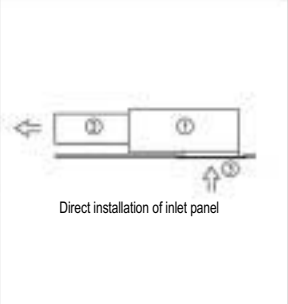
- NOTES**
- 1 Fan characteristics as shown ar in "fan only" mode.
 - 2 ESP: External static pressure

3TW31268-1

11 Installation

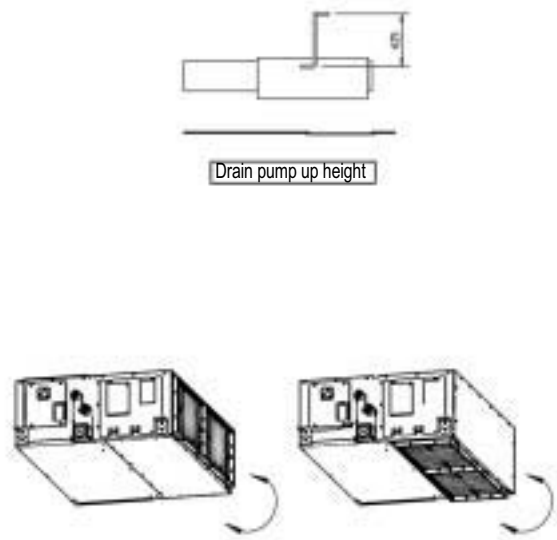
11 - 1 Installation method

FXSQ-P

Rear Suction	Bottom Suction
 <p style="text-align: center;">Ceiling return</p>	 <p style="text-align: center;">Ceiling return</p>
 <p style="text-align: center;">Installation with duct</p>	 <p style="text-align: center;">Direct installation of inlet panel</p>

Wide variety of installation methods

Number	Description	
1	Main body	
2	Air outlet duct	Field supply
3	Inlet panel	Optional accessory
4	Access panel	optional accessory
5	Air inlet duct	Field supply



Drain pump up height

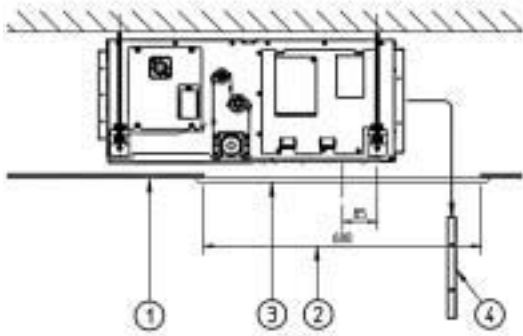
Easy modification from rear to bottom suction

3TW31183-1

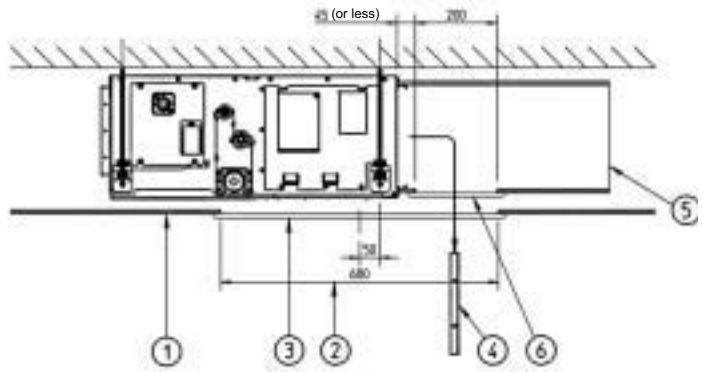
11 Installation

11 - 2 Filter installation method

FXSQ-P



Installation without air inlet duct

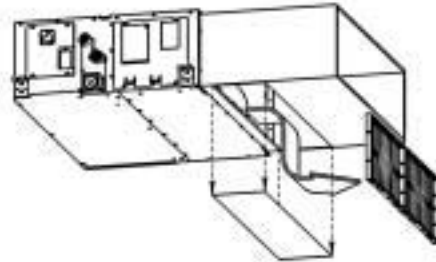


Installation with air inlet duct

Nr.	Description
1	Suspended Ceiling
2	Ceiling opening
3	Service access panel (optimal)
4	Air filter
5	Air inlet duct
6	Duct service opening

NOTES

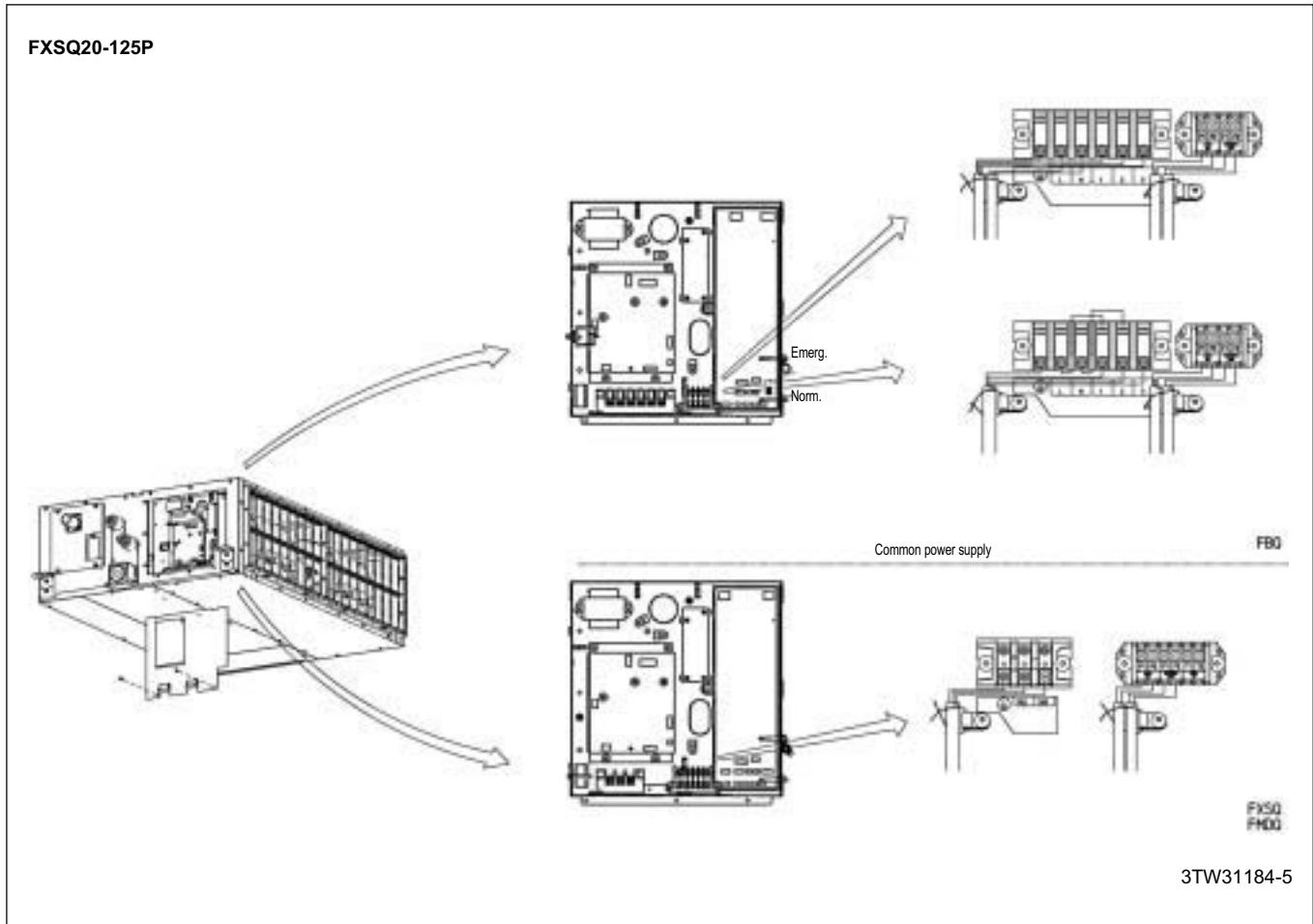
- 1 When installing the unit with rear suction, a service opening is necessary for the maintenance of the air filters.
- 2 When installing the unit with a suction duct. A service opening must be provided in the duct.



3TW31184-4

11 Installation

11 - 3 Switch box connection



In all of us,
a green heart



Daikin's unique position as a manufacturer of air conditioning equipment, compressors and refrigerants has led to its close involvement in environmental issues. For several years Daikin has had the intension to become a leader in the provision of products that have limited impact on the environment. This challenge demands the eco design and development of a wide range of products and an energy management system, resulting in energy conservation and a reduction of waste.



Daikin Europe N.V. is approved by LRQA for its Quality Management System in accordance with the ISO9001 standard. ISO9001 pertains to quality assurance regarding design, development, manufacturing as well as to services related to the product.



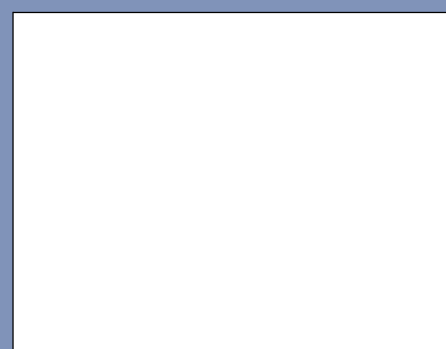
ISO14001 assures an effective environmental management system in order to help protect human health and the environment from the potential impact of our activities, products and services and to assist in maintaining and improving the quality of the environment.



Daikin units comply with the European regulations that guarantee the safety of the product.

VRV® products are not within the scope of the Eurovent certification programme.

The present publication is drawn up by way of information only and does not constitute an offer binding upon Daikin Europe N.V.. Daikin Europe N.V. has compiled the content of this publication to the best of its knowledge. No express or implied warranty is given for the completeness, accuracy, reliability or fitness for particular purpose of its content and the products and services presented therein. Specifications are subject to change without prior notice. Daikin Europe N.V. explicitly rejects any liability for any direct or indirect damage, in the broadest sense, arising from or related to the use and/or interpretation of this publication. All content is copyrighted by Daikin Europe N.V..



DAIKIN EUROPE N.V.

Naamloze Vennoetschap
Zandvoordestraat 300
B-8400 Oostende, Belgium
www.daikin.eu
BTW: BE 0412 120 336
RPR Oostende