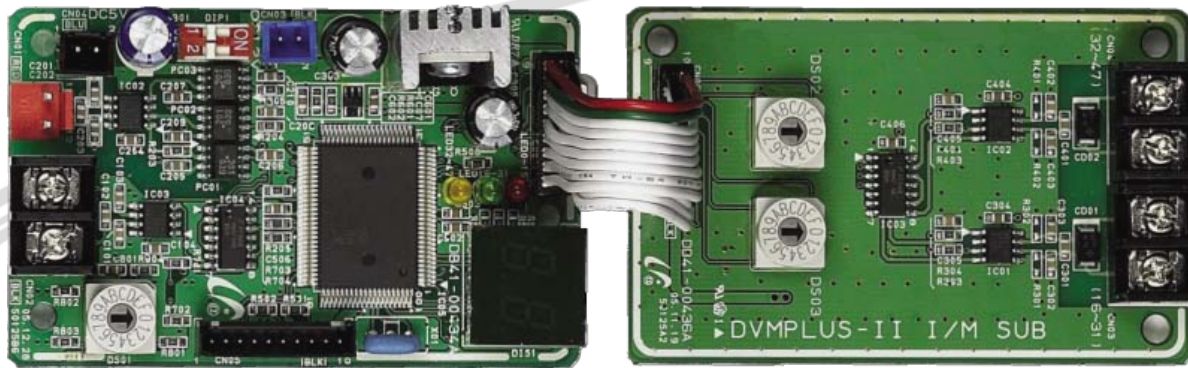
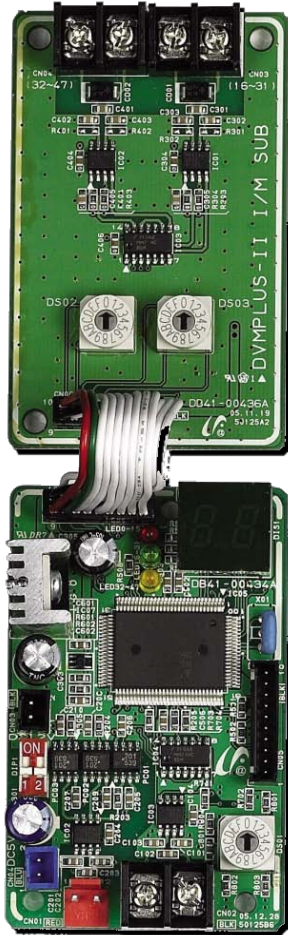


# Interface module

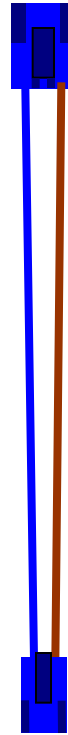


**MIM-B13B**

## - MIM-B13B



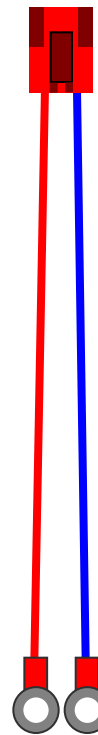
Interface module



12VDC  
Power cable

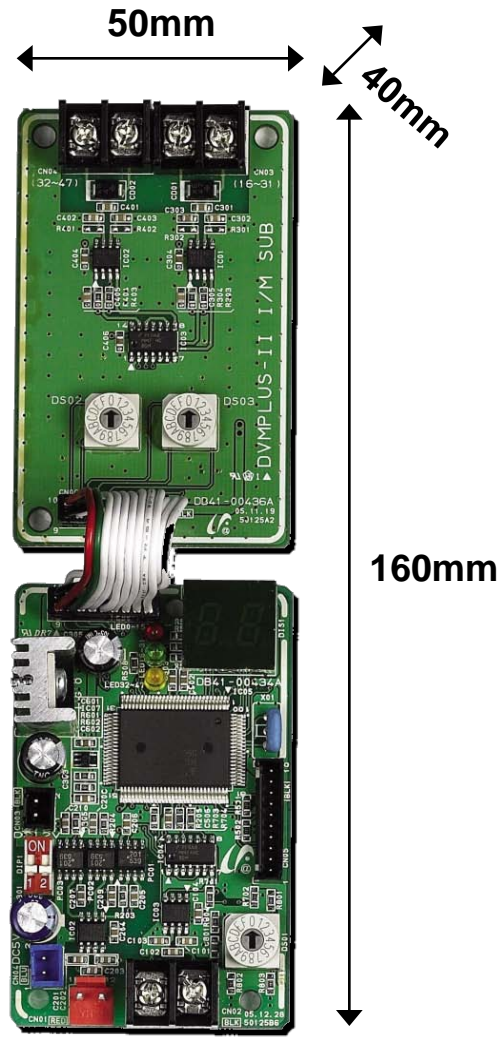


5VDC  
Power cable

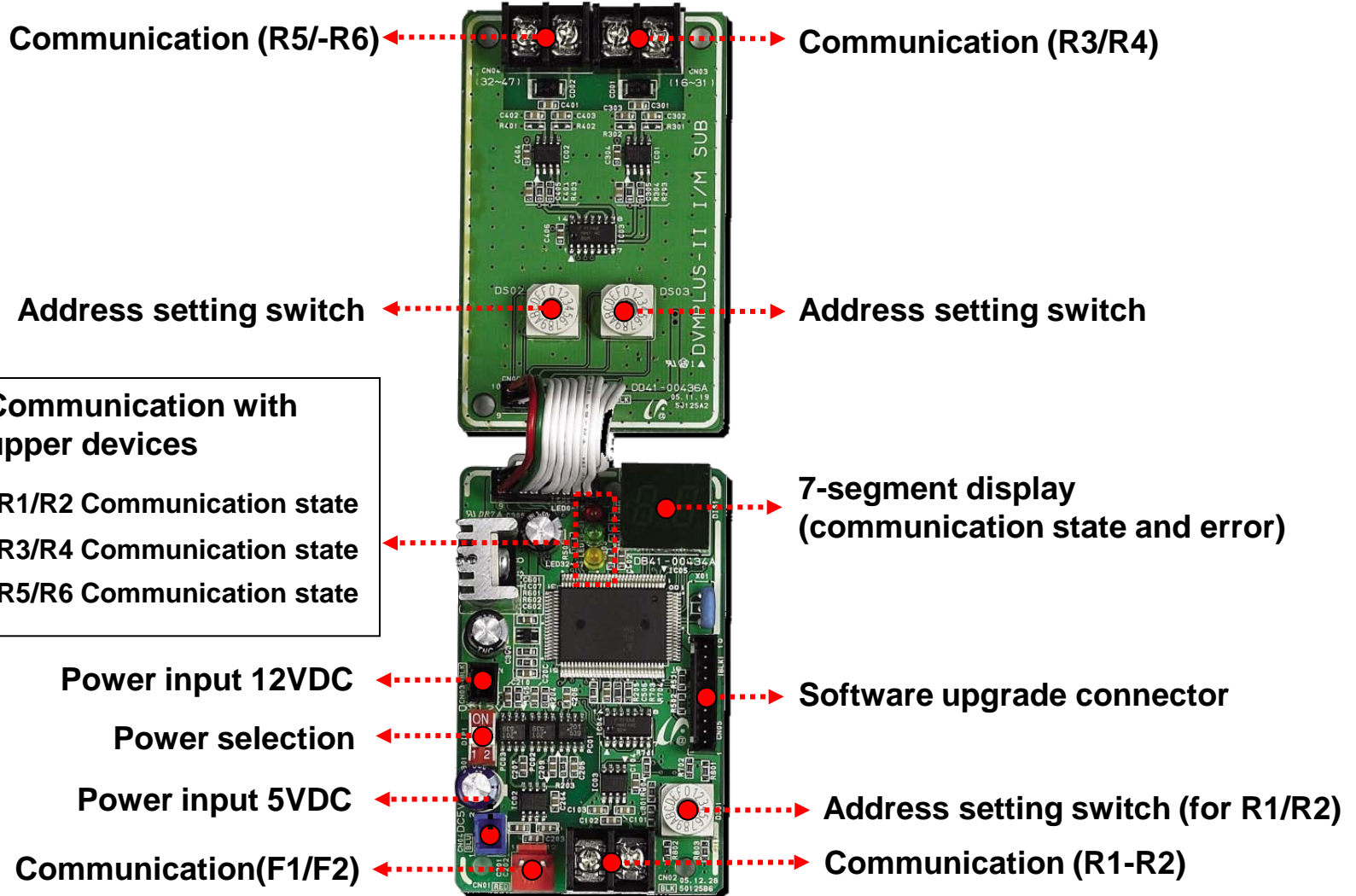


F1-F2  
Comm. wire

## - Dimensions

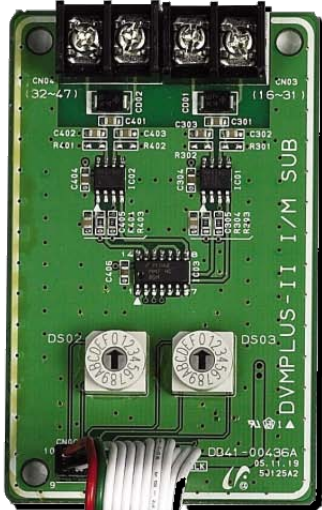


## - MIM-B13B

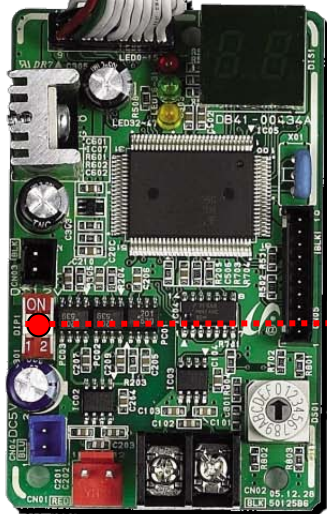


# Interface module – MCM-B13B

## - Power selection



SW1, SW2	
OFF	ON
For dual power supply(12VDC,5VDC) - DVM Plus II/III, HR II/III	For single power supply(12VDC) - FJM+A, ERV, mini DVM(R410A)

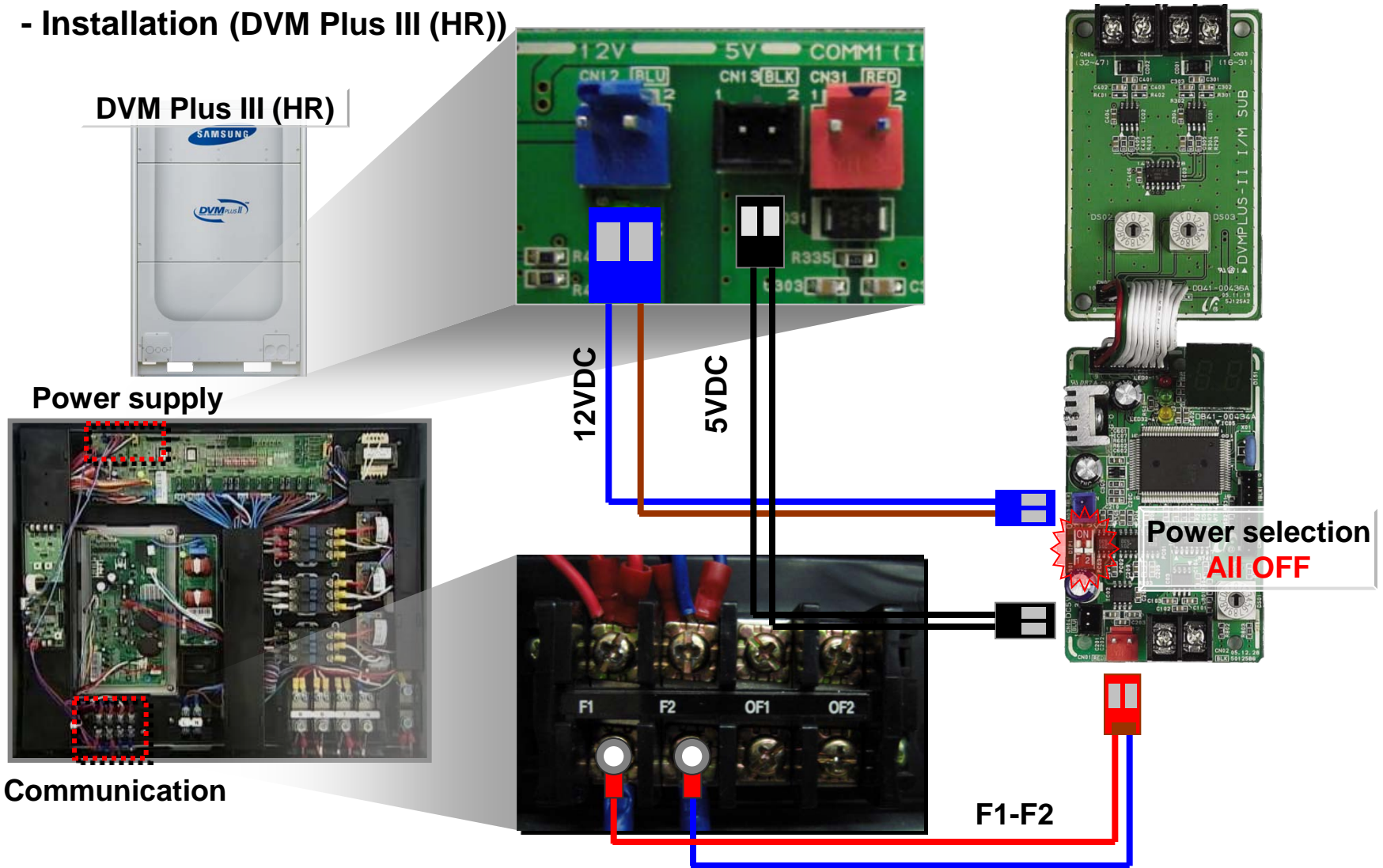


Power selection



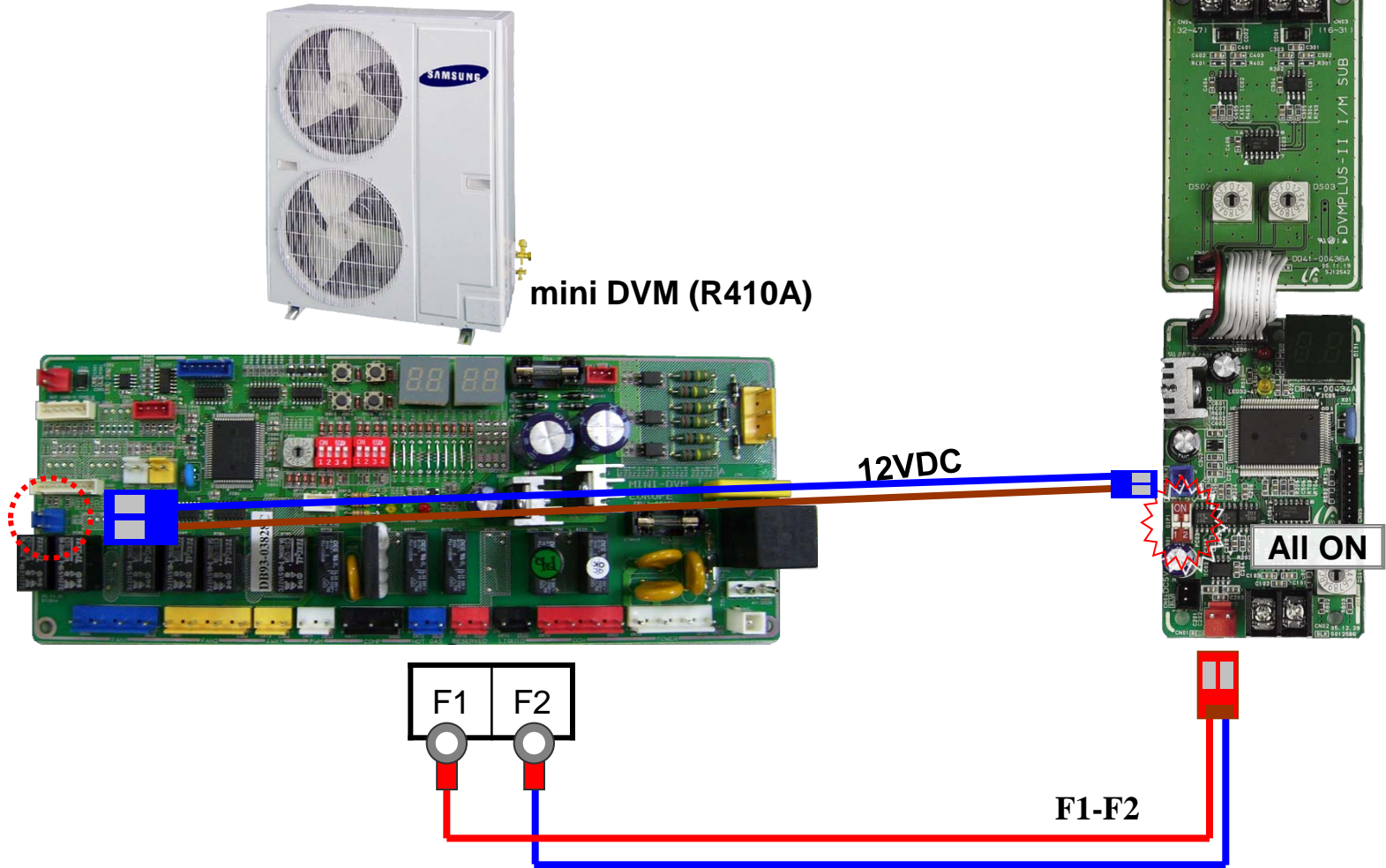
# Interface module – MCM-B13B

- Installation (DVM Plus III (HR))



If the power selection switches are set to ON, the outdoor unit PCB and MIM-B13B may be **damaged**.

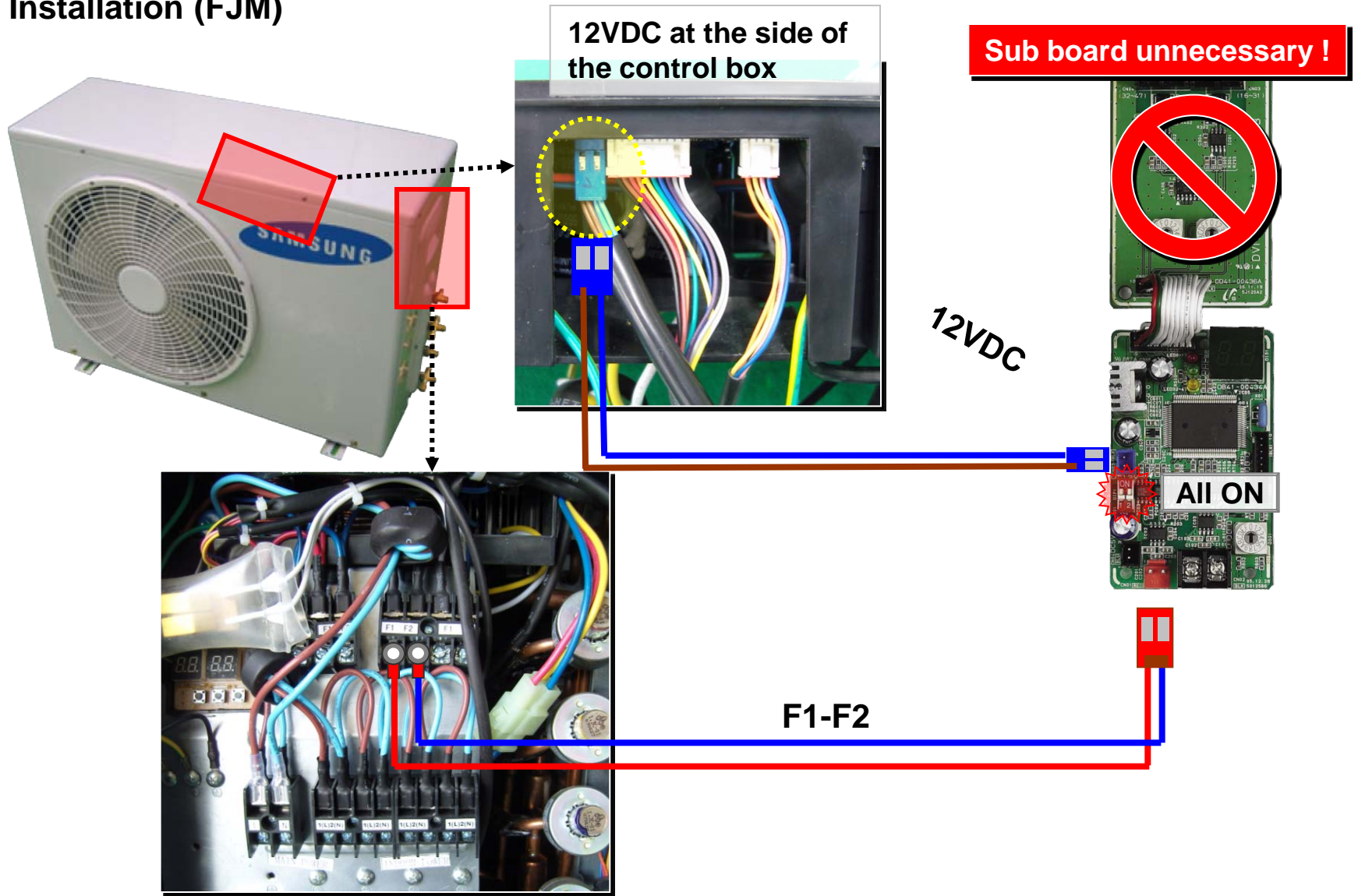
## - Installation (mini DVM R410A)



- Mini DVM(R410A) has only one power supply(12VDC) for MIM-B13B.
- Power selection switch OFF -> No communication with MIM-B13B.

# Interface module – MCM-B13B

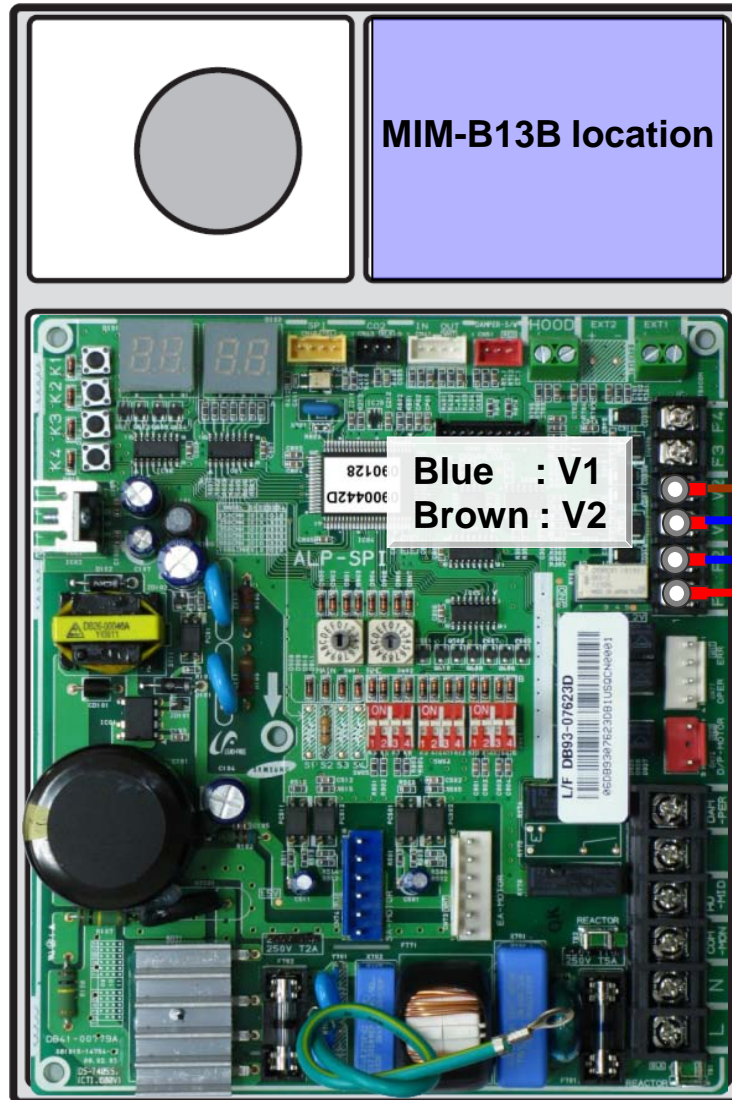
## - Installation (FJM)





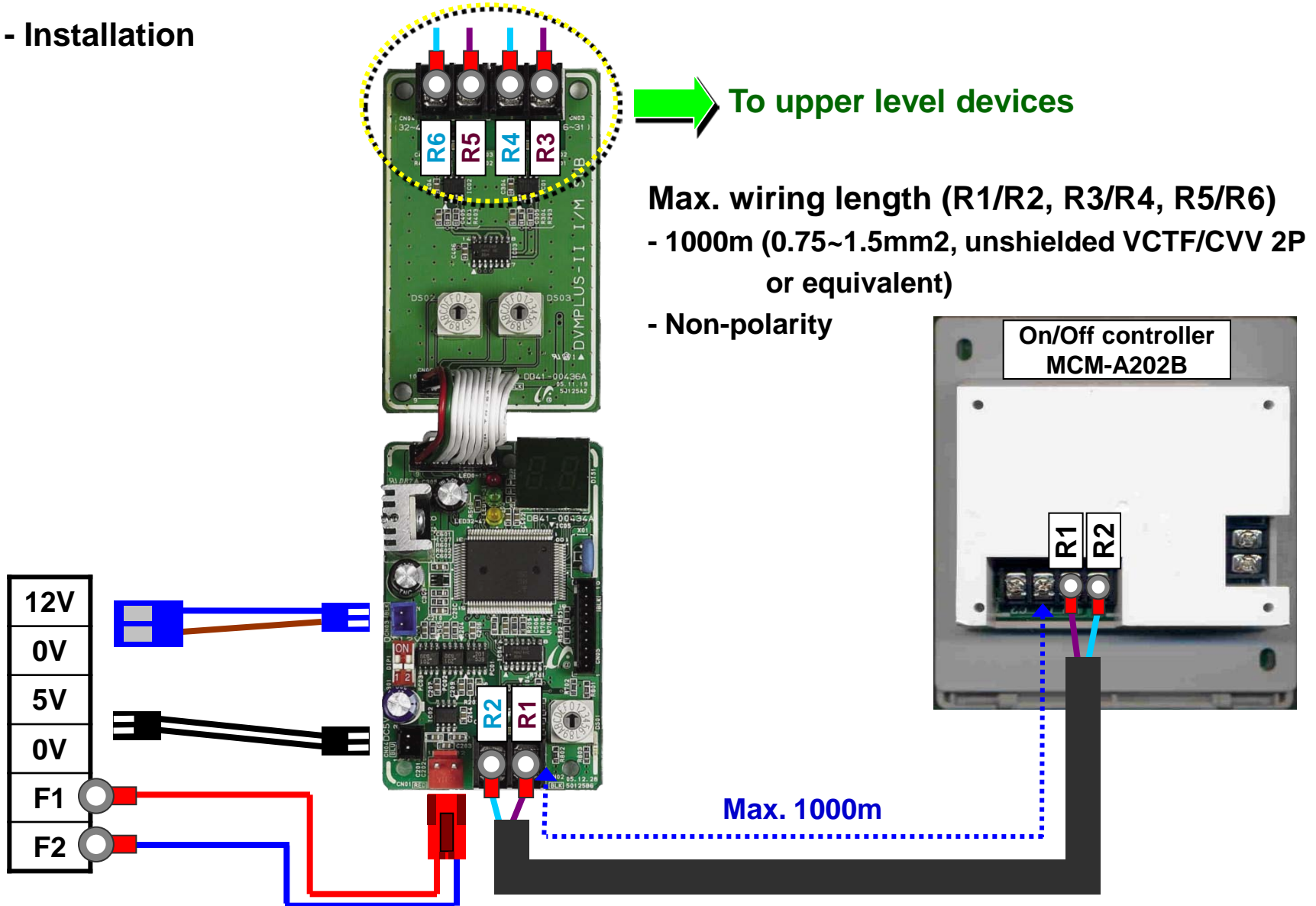
# Interface module – MCM-B13B

## - Installation (ERV)

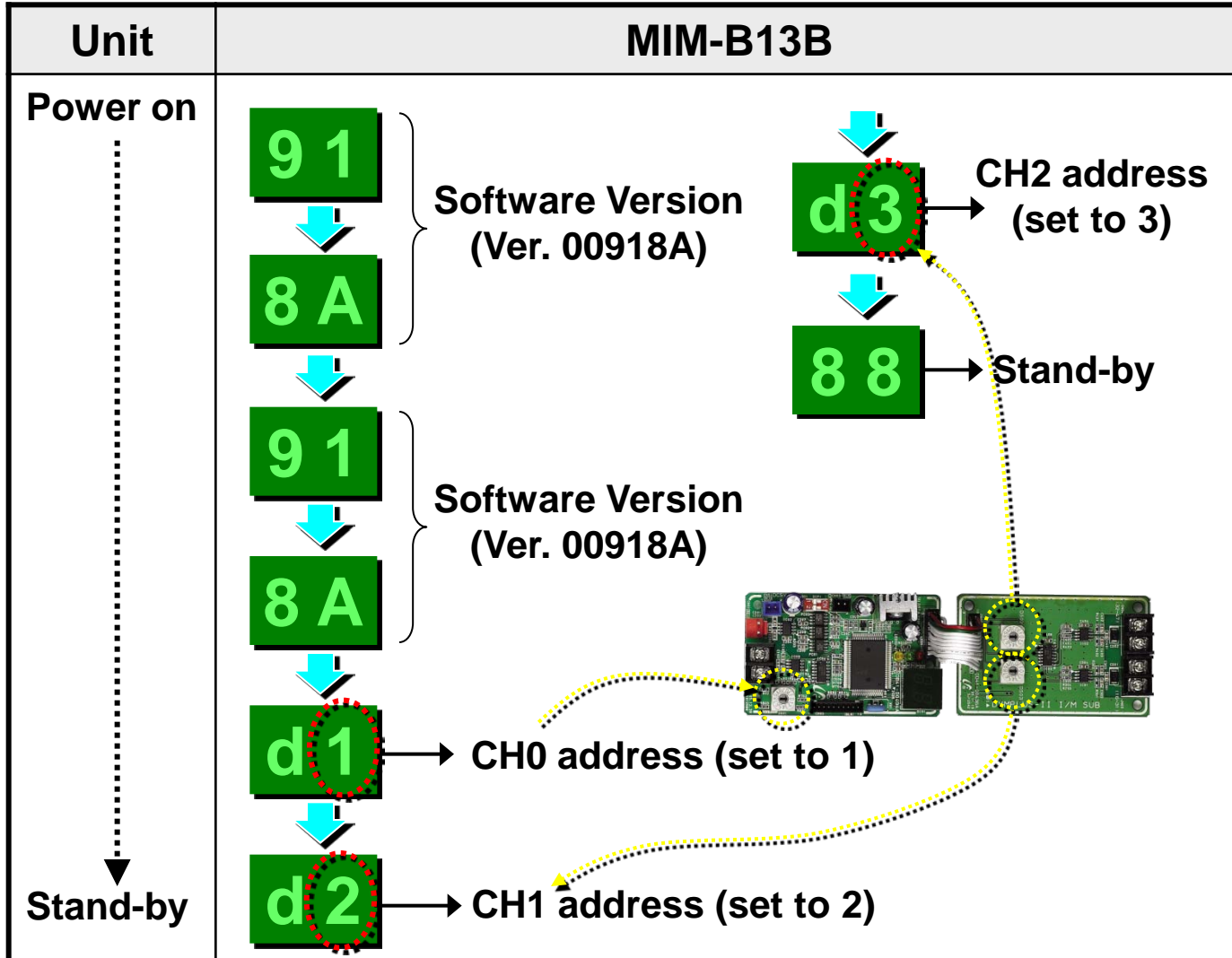


**Sub board unnecessary !**

## - Installation



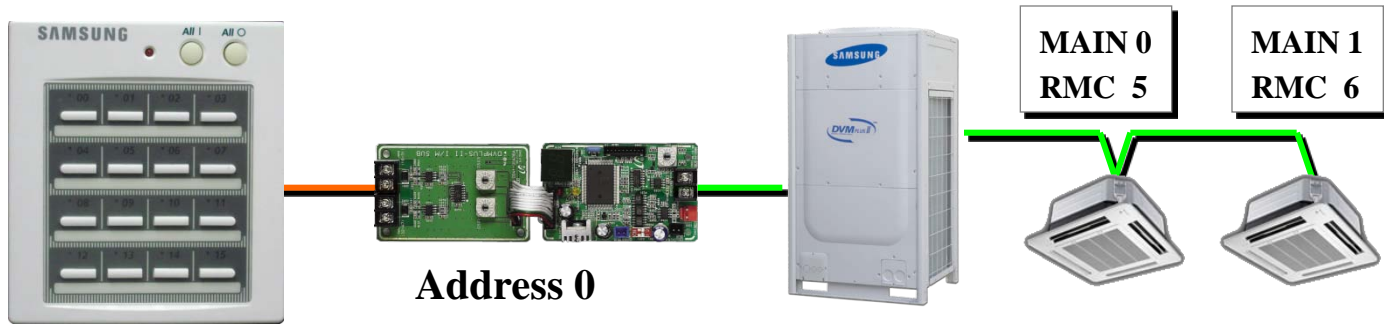
## - Display



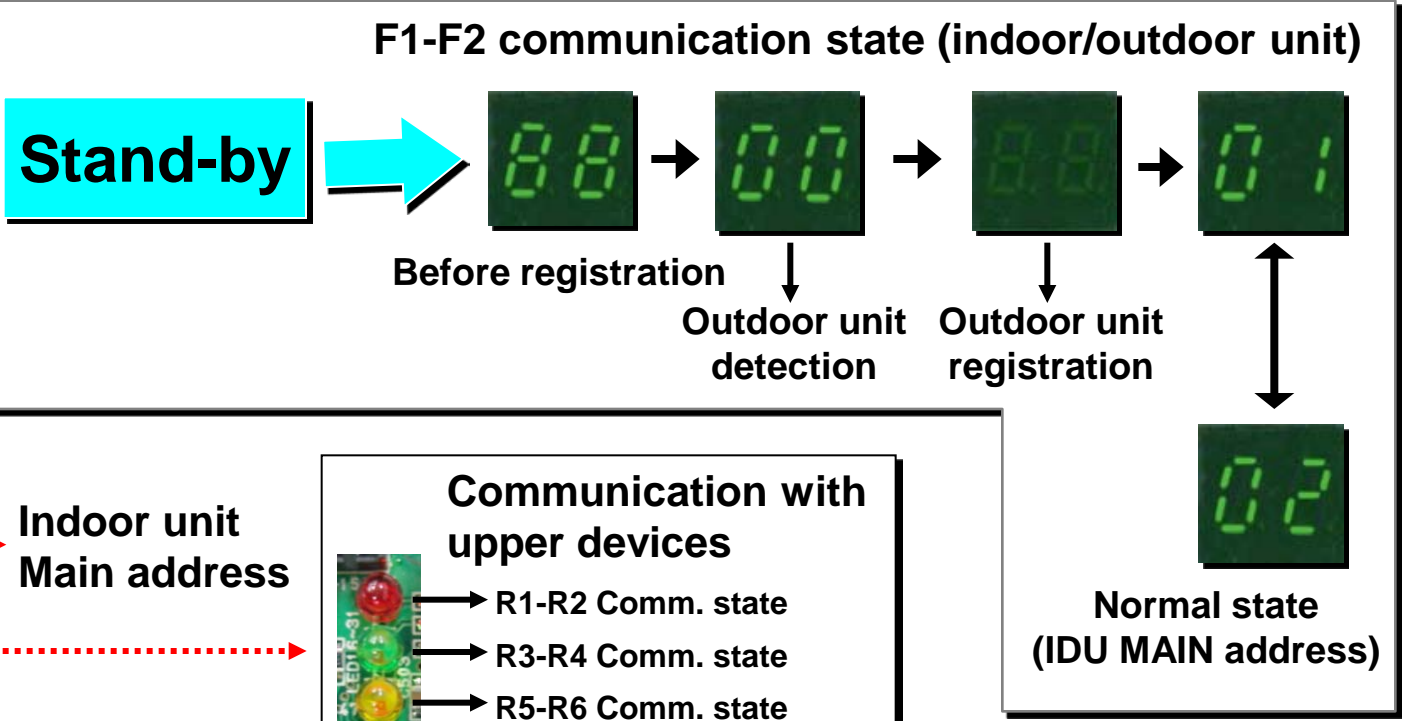
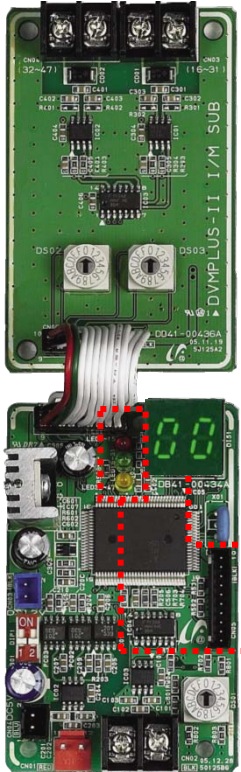
# Interface module – MCM-B13B

- Display

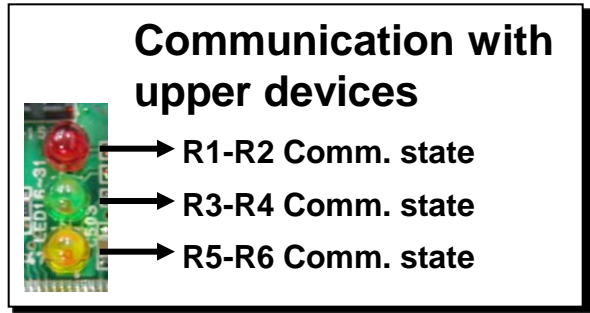
K3 : OFF  
K4 : OFF



Address 0



Indoor unit  
Main address





## - Error display

