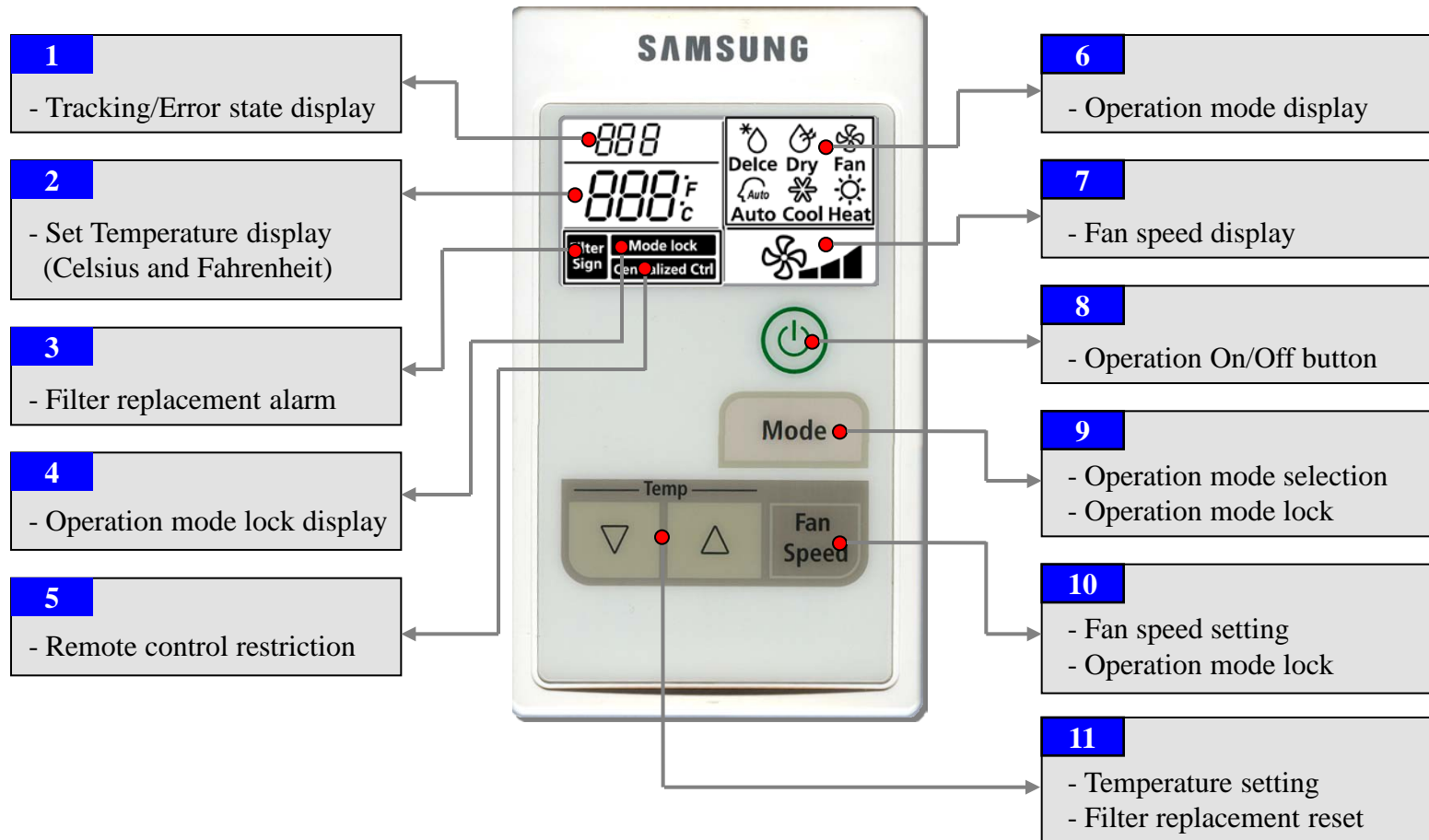


Wired remote controller

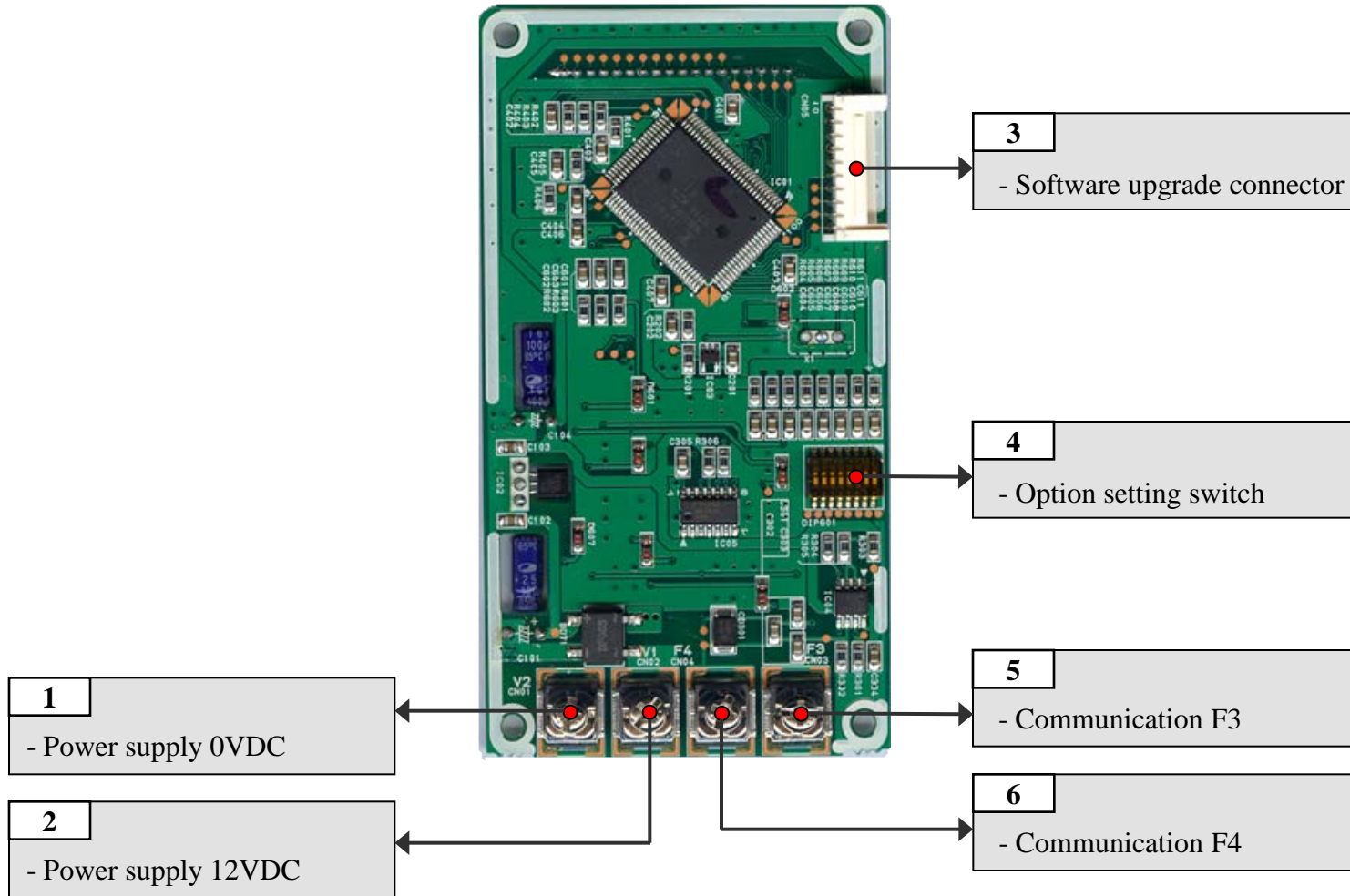


MWR-SH00

- Display and buttons

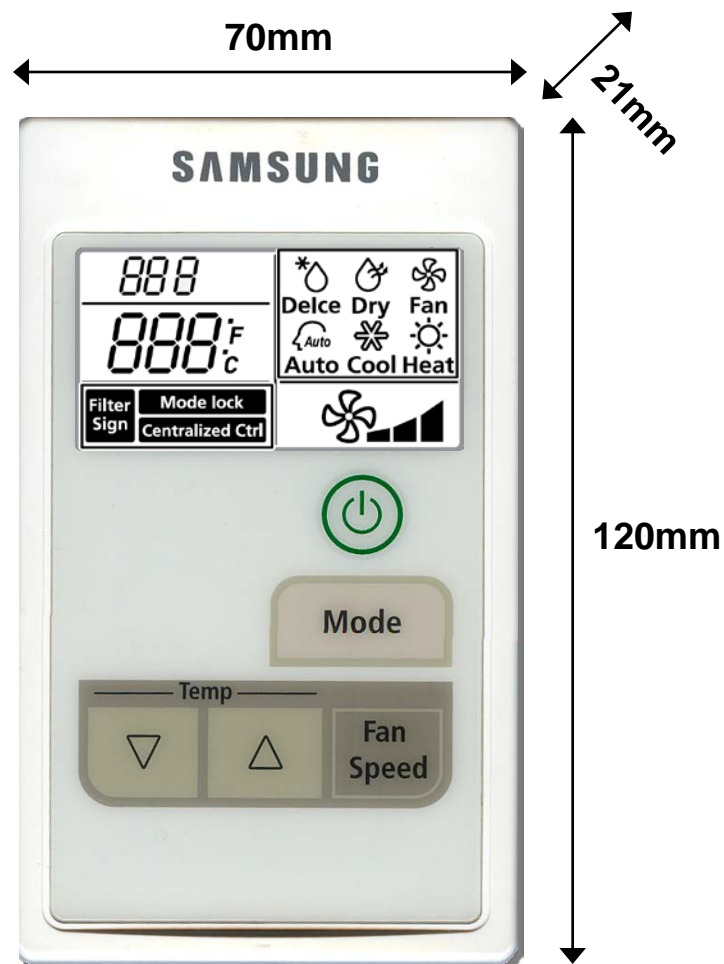


- Switches and connectors



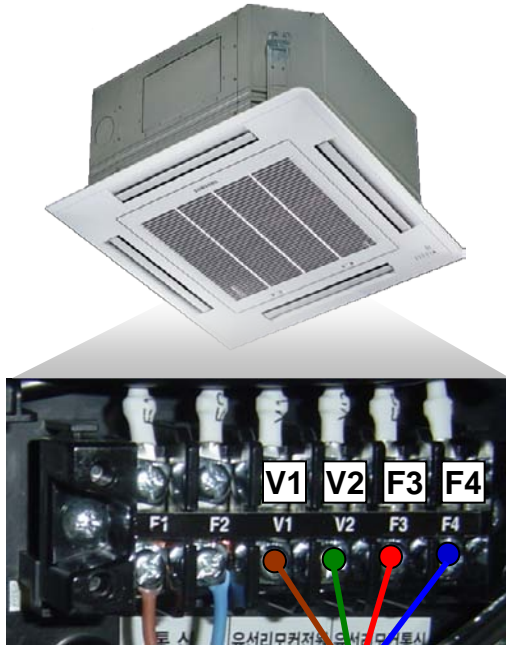
Wired remote controller – MWR-SH00

- Dimensions



Wired remote controller – MWR-SH00

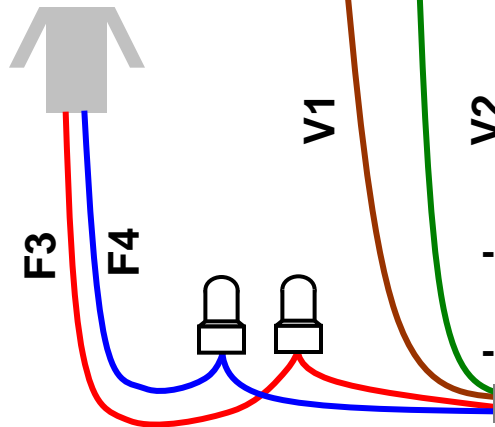
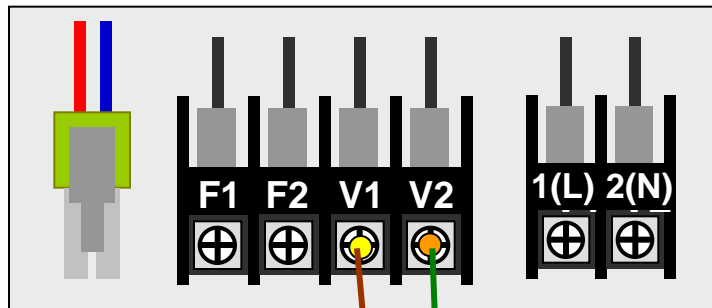
- Connection to single indoor unit (2way, 4way, mini 4way, duct, Ceiling)



- 0.75~1.5mm², unshielded VCTF/CVV 2P or equivalent
- Non-polarity

Wired remote controller – MWR-SH00

- Connection to single indoor unit (slim 1way)



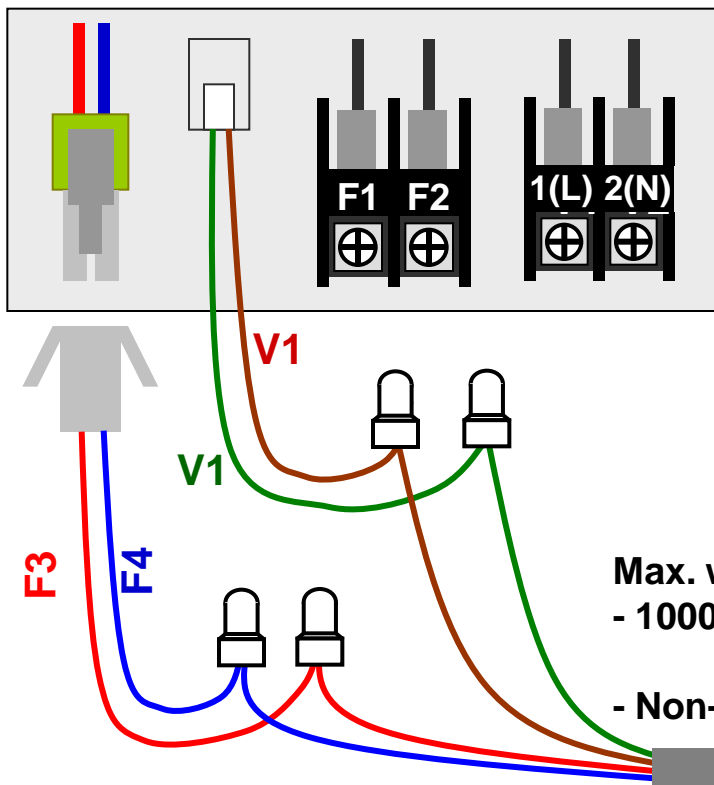
- 0.75~1.5mm², unshielded VCTF/CVV 2P or equivalent
- Non-polarity

MWR-SH00

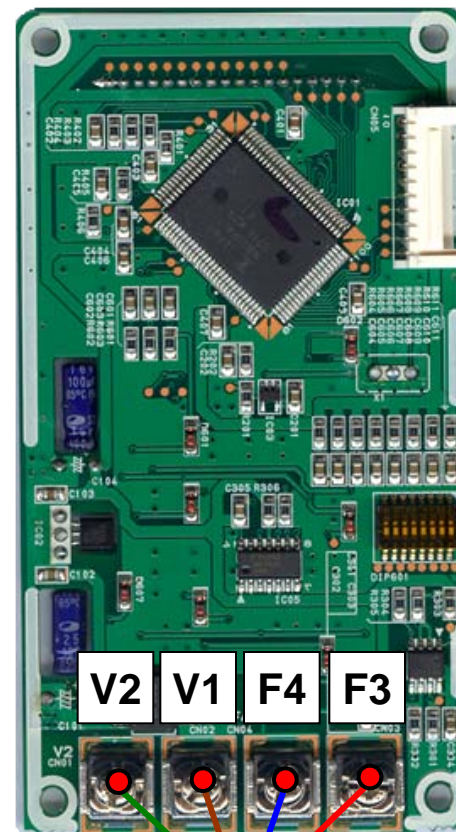


Wired remote controller – MWR-SH00

- Connection to single indoor unit (RAC, Console)

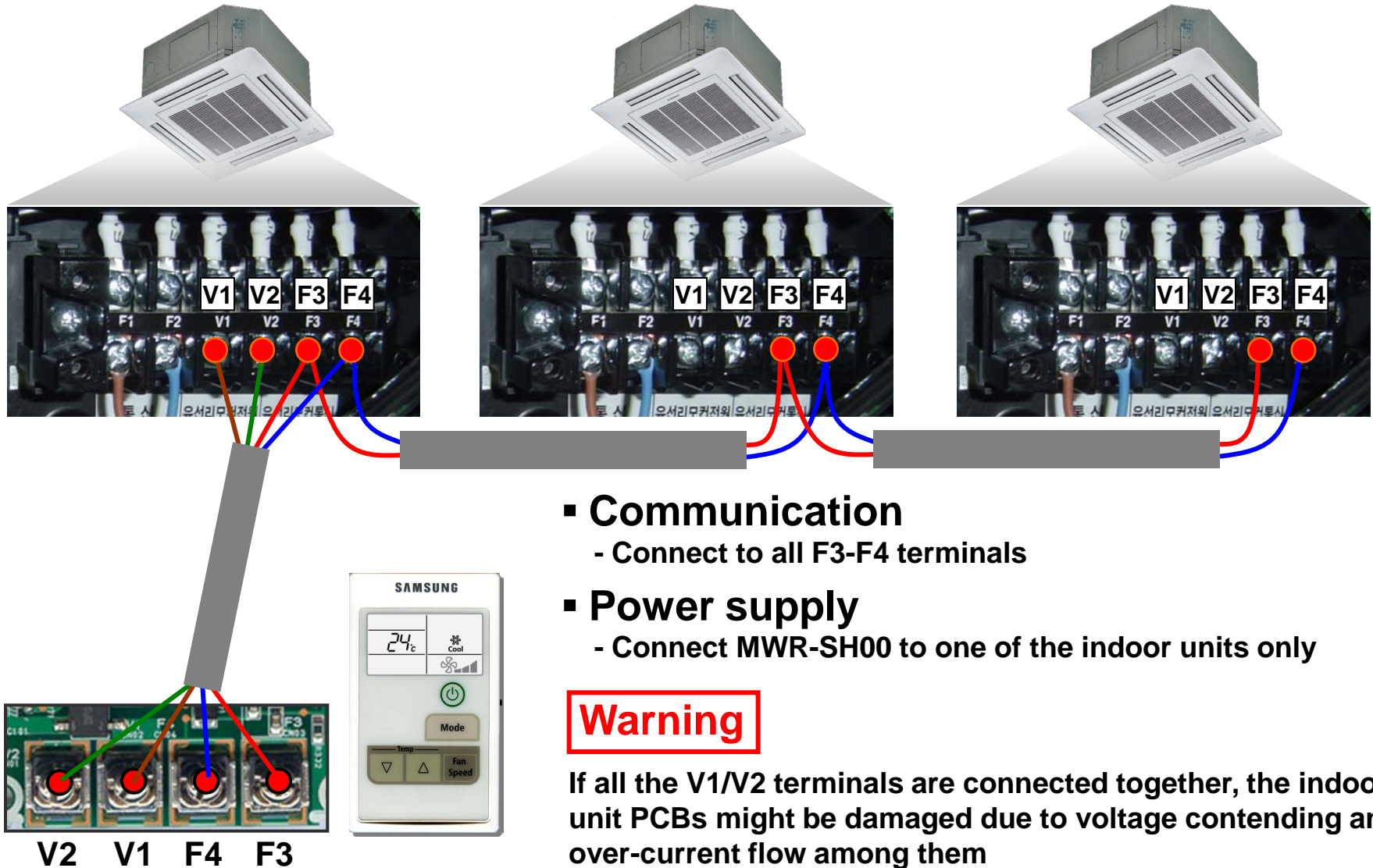


MWR-SH00

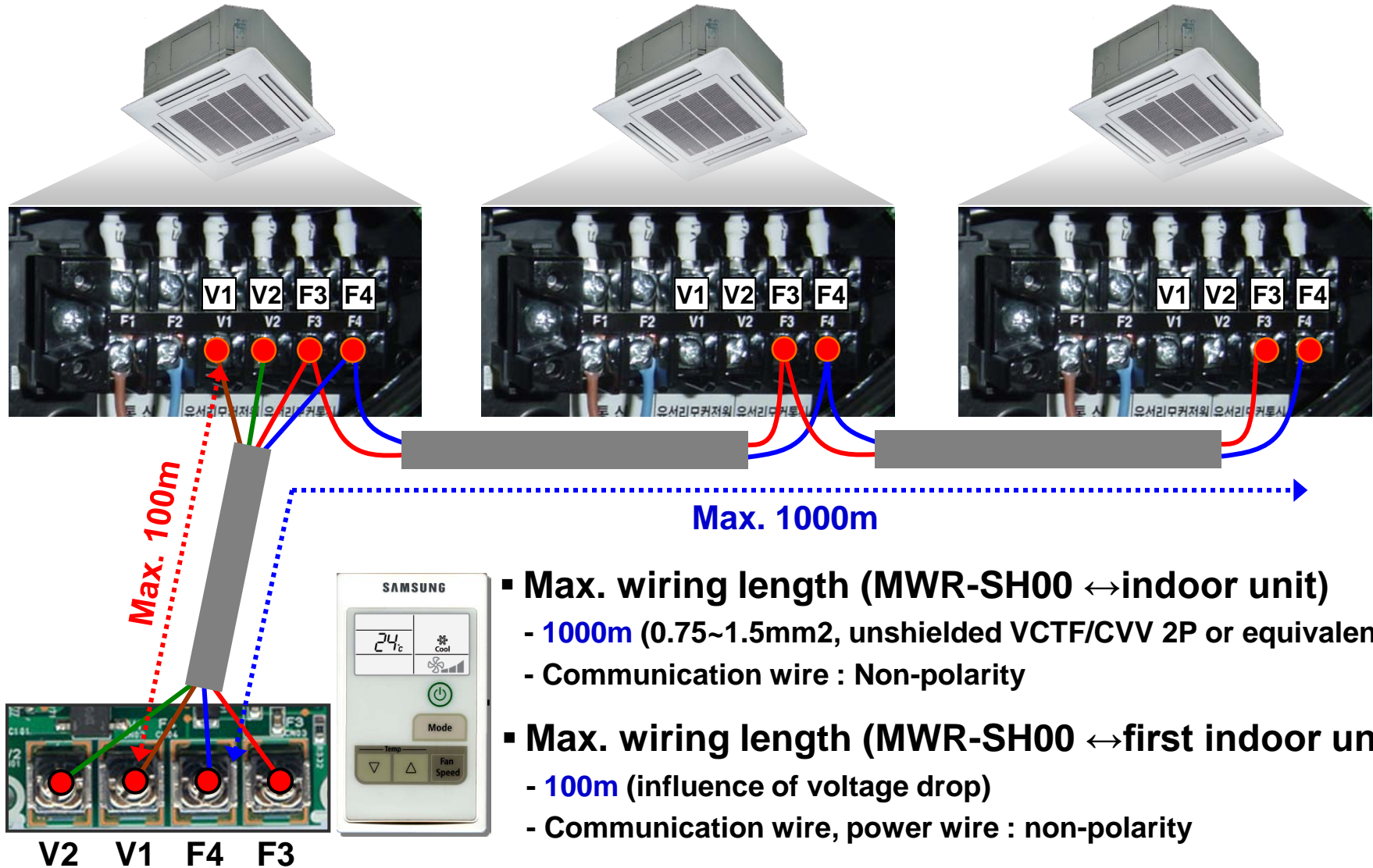


Wired remote controller – MWR-SH00

- Connection to multiple indoor units



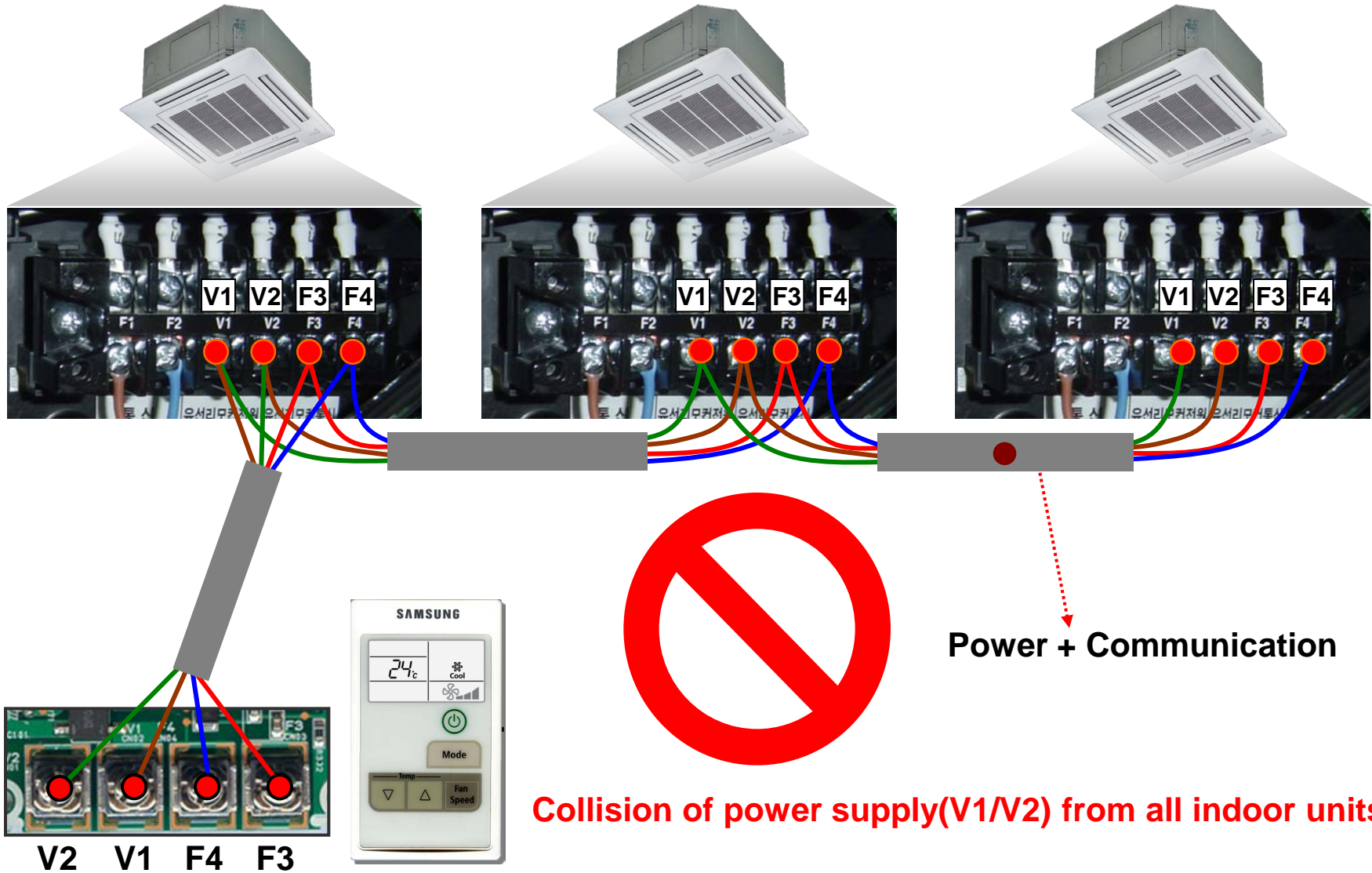
- Connection to multiple indoor units



- **Max. wiring length (MWR-SH00 ↔ indoor unit)**
 - 1000m (0.75~1.5mm², unshielded VCTF/CVV 2P or equivalent)
 - Communication wire : Non-polarity
- **Max. wiring length (MWR-SH00 ↔ first indoor unit)**
 - 100m (influence of voltage drop)
 - Communication wire, power wire : non-polarity

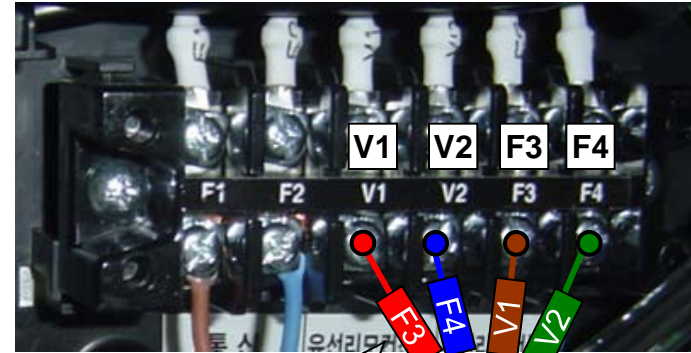
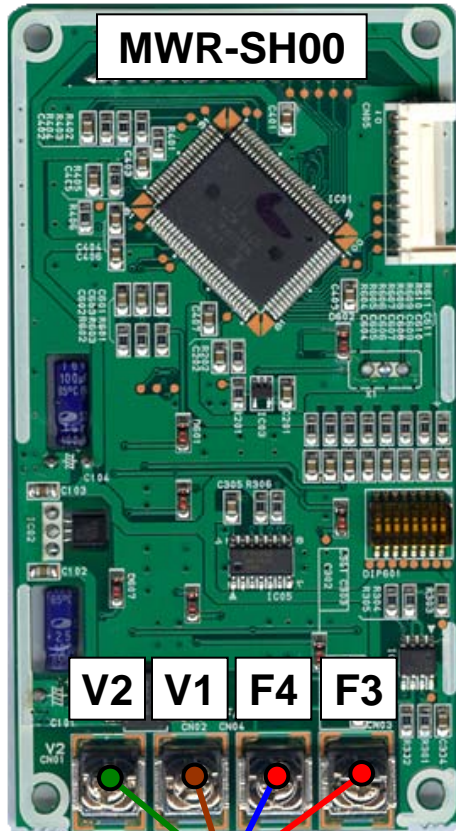
Wired remote controller – MWR-SH00

- **No common connection** of indoor unit V1/V2 terminals



Wired remote controller – MWR-SH00

- Protection against wrong power connection

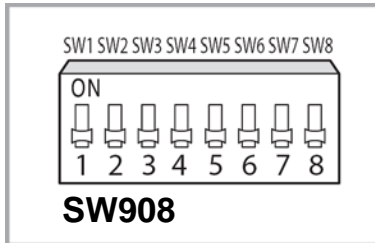


V1 → F3
V2 → F4
F3 → V1
F4 → V2

**MWR-SH00
PCB fault !**



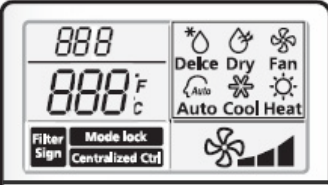
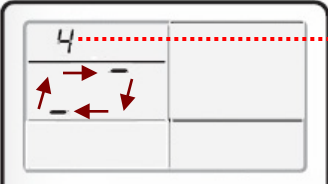
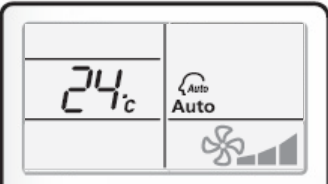
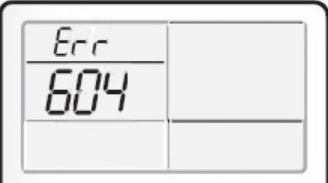
- Option switch



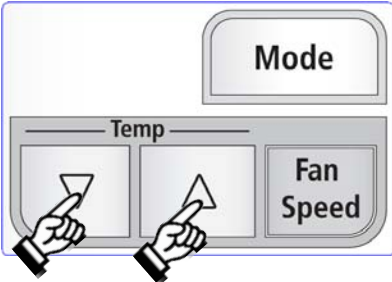
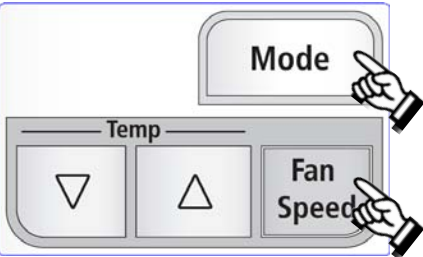
Default settings are all OFF.

No	OFF	ON
SW1	Heating/Cooling	Cooling only
SW2	Temperature display in °C	Temperature display in °F
SW3	Wireless remote control enabled	Wireless remote control disabled NOTE All wireless remote control signals including option code setting are ignored
SW4	Use Auto mode	Skip Auto mode
SW5	Release mode lock in case of power failure	Maintain mode lock in case of power failure
SW6	-	-
SW7	-	-
SW8	Set as Master NOTE Does not put any priority on a Slave wired remote controller	Set as Slave

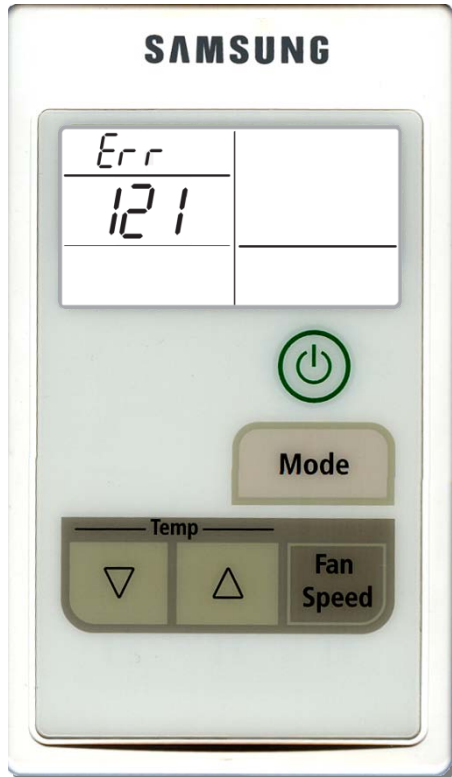
- Operation sequence display

Operation	Display	
Power reset		All the LCD segments are ON for 1 second.
Registration		<p>Connected number of EHP units</p> <p>2 segments rotate clockwise to indicate indoor unit registration process</p>
Normal operation		Connected indoor unit state display
Error		Communication error between the wired remote controller and the indoor unit.

- Filter reset & mode lock

Filter replacement sign reset	
Function	Clears filter replacement sign on the indoor unit display
Control	
Operation mode lock	
Function	Prevents users from selecting the operation mode
Control	 <p>Press the operation mode and fan speed setting buttons together for 5 seconds.</p> <p>NOTE Temperature and fan speed can be set.</p>

- Error display & description



Error code	Description
E601	Communication error with indoor unit(s) for 3 minutes after tracking process
E602	Communication error between Master and Slave remote controller
E605	Communication error with 7-day Scheduler
E606	Wired remote controller of COM2 setting has connected to COM1 or vice versa..
E607	2 Master remote controllers on F3-F3 communication
E619	Indoor units of Celsius and Fahrenheit installed on F1-F2 communication.
E620	Remote control of Celsius connected to indoor unit of Fahrenheit or vice versa.
E621	Option switch setting of Master remote controller does not match to that of Slave remote controller.